

# Flower Frog Collection

## Sale No. 1

I am offering my collection of 40 years for sale. In the coming weeks/months, I will be posting PDF links on my website. Each PDF will contain flower frogs with photos which show condition, some description, and marks. These flower frogs will be sold on a first commitment basis. Email requests for availability and shipping charges will be answered in the order they are received. If you would like more pictures, please email me.

Payment is via U. S. Dollar check or U. S. Dollar Money Order. Shipment via U. S. Postal Service Priority or Ground Mail. Insurance is optional . Non-insured shipments are at the buyer's risk.

Bonnie Bull, P. O. Box 596, Wirtz, VA 24184 USA    email: [bbull@bullworks.net](mailto:bbull@bullworks.net)

Please email me with alphanumeric listing ID for availability and shipping – include your name and address. Your address is needed to determine the best shipping cost.



FF136 Depression Glass Owl in amber, 4.5"h. The top rim of the base has some very minor chipping. The ear looks chipped in the photos, but it is a molding blurb. \$23.



FF137 Summit Art Glass Bashful Charlotte on a finely ribbed base, 10.25"h., light blue, marked "PAT. NO. 1645577" followed by a "V" in a circle. The "V" is for Vogel song, owner of Summit Art Glass. Summit bought the Cambridge mold and reissued her on a finely ribbed base. Exc. Cond. \$75. (View more photos in the next slide.)





FF137 Summit Art Glass Bashful Charlotte, continued.



FF138 Mirror Images 8.5" Draped Lady on ribbed base in Alexandrite. This item was given to me by Mr. Scherschligt of Mirror Images. Base indent marked with an "M" superimposed on an "I." Exc. Cond. \$42.

**SOLD**







FF139 Imperial 8.5"h. Draped Lady on ribbed base in crystal. This is probably the Imperial reissue from the 1960s. It is not marked. It has a flat bottom interior that indents only 1/2 inch. The Cambridge lady has a deeper arched indent. Exc. Cond. \$27.





FF140 Cambridge Two-Kid in light emerald satin, 9"h., marked "PAT. NO. 1645577." Depicts young boy holding young goat. Very small chip at center back of circle boy is standing on and one very small chip on bottom of base at outer edge. Light colored area on side of base. Good Condition. \$180. (View more photos in the next slide.)



FF140 Cambridge Two-Kid, continued.





FF141 Cambridge High Domed Flower Block in peach-blo, 3.5" diam., three small triangular feet, embossed on opposite sides "3 1/2" and "PAT'D APRIL 11, 1916." Exc. Cond. \$37. (View more photos in the next slide.)

[View more photos in the next slide.](#)





FF141 Cambridge High Domed Flower  
Block in peach-blo, continued.







FF142 Cambridge Blue Jay in crystal on ribbed base, 5.5"h., introduced in the late 1930s. Exc. Cond. No chips or cracks. \$75.





FF143 Cambridge Heron on smooth base, 12"h., marked "PAT. NO. 1645577."  
Produced c.1929-40. Exc. Cond. \$55. (View more photos in the next slide.)





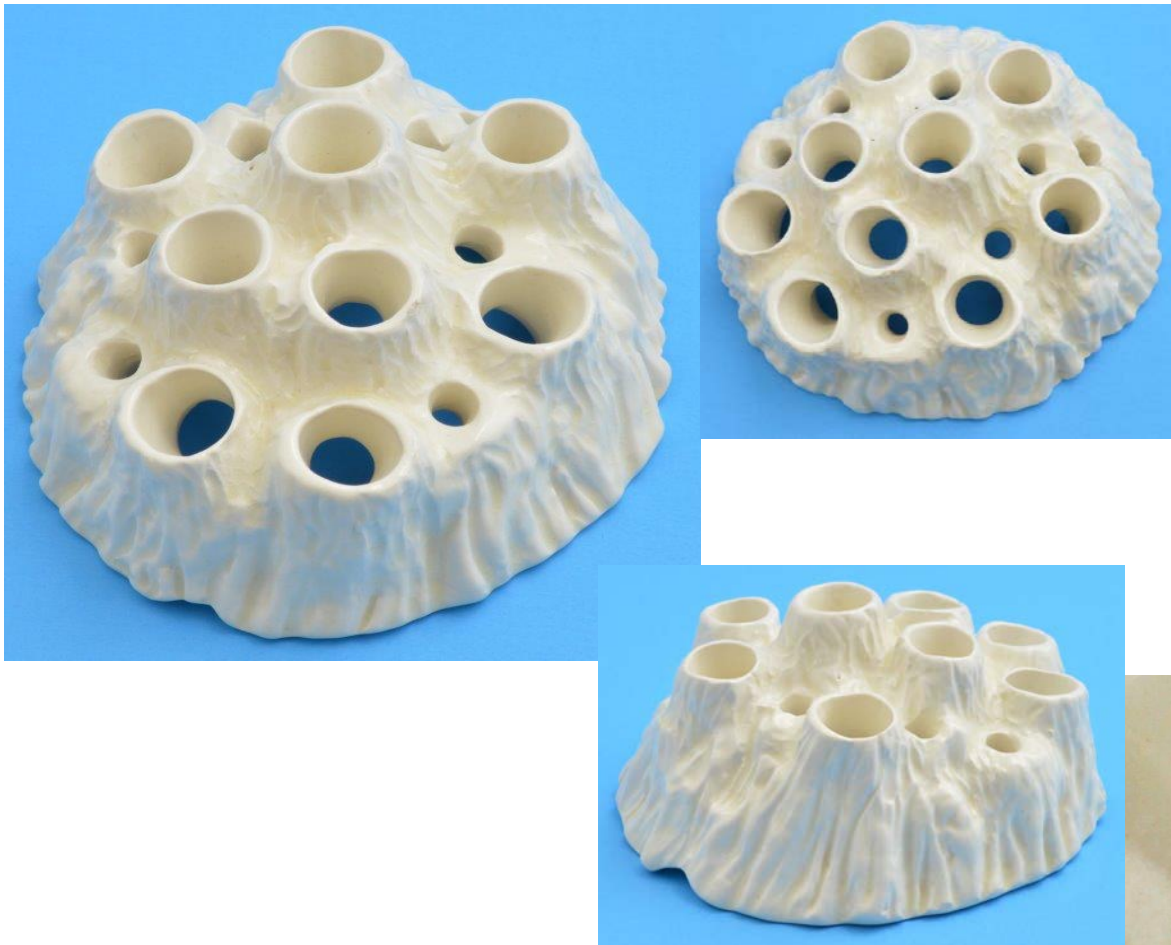
FF143 Cambridge Heron on  
smooth base, 12"h.,  
continued.





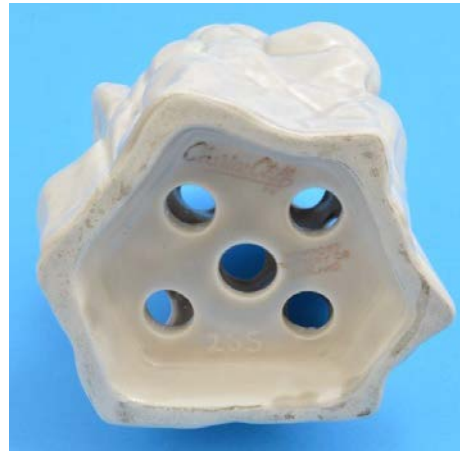
FF144 Cambridge Seagull in crystal with smooth base.  
Introduced in the late 1930s. 9-3/4" h. x 6" w. (beak to tail) x  
4" d. base. Exc. Cond. \$25.





FF 124 Wedgwood Tree Trunk in cream glaze, 4.25"d. x 2.25"h., nine large holes and seven smaller holes, three base indents for water flow, impressed "WEDGWOOD, MADE IN ENGLAND." Very Good Cond. \$55.





FF073 Clarice Cliff flower frog in white, 4"h. x 3.5"w., sixteen flower holes, base slightly recessed with five equal holes. Marked "Clarice Cliff 255 Newport Pottery Co. ENGLAND." No chips or cracks, Exc. Cond. \$57.





FF145 Westmoreland  
crystal round 2 1/2"d.  
The block has three  
bar feet, an indented  
top rim and a bottom  
ring. Exc. Cond. \$12.



Bottom  
View







FF 146 Westmoreland  
Carnival Glass Flower  
Block, 2.5" d. The block  
has three small button  
feet, an indented top  
edge and a bottom ring.  
Ex. Cond. \$20.







Bottom  
View



FF 147 Japana Specialty Company glass block with flat top, 2.5"d., eight flower holes and three base indentations for water flow. Base is marked in a circle around the center hole "JAPANA PAT. JAN. 31, 1905," except the nine is backwards. \$38. **SOLD**





FF148 Japana Specialty Company  
dome shaped block with  
scalloped edge, 4" base diameter  
x 2.5"h., four small bead feet.  
Bottom is marked in a circle  
around the center "PAT JAN 31  
1905." This shape was advertised  
in 1921 in *Crockery and Glass  
Journal*. \$22.







Top View



Bottom View

FF149 Glass round, 3.75" w x 2.5" h. Bottom center marked in raised letters "MADE IN FRANCE." Bottom has 6 beaded feet. Rim around center. One large center flower hole surrounded by 6 medium holes and another ring of 11 smaller holes. Holes do not go through to the bottom. Yellow reflection is due to lighting. Exc. condition, no chips or cracks. \$12.  
Note: Between the wars French firms purchased the right to produce Davidson blocks. In this case the holes weren't punched.





FF150 Glass Round 4.5"w x 1.5"h." 13 flower holes. Very heavy piece. Very nice clear glass. Yellow cast is due to lighting. The glass in this item is clear and excellent. Three "pyramid" like feet on bottom. Mint Cond. \$15

Top View



Bottom View





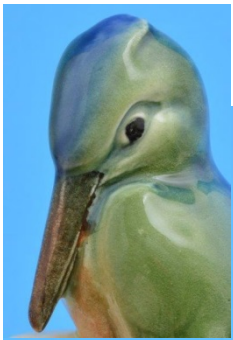


FF113 Goebel. Girl with Fawn, 9.5"h., eight flower holes go through to bottom, trademark stamp and impress, also "8831." Excellent Cond. \$95. (View more photos in the next slide.) **SOLD**



FF113 Goebel. Girl with Fawn, con't. **SOLD**





FF 123 Goebel Kookaburra Bird, 5"l. x 4.25"h., nine flower holes, self-contained (holes don't go through to bottom), Goebel trademark impress and stamp, also "Z.T.721." Exc. Cond., but dirty inside. \$43. My husband bought it in Australia.

