

Various Corkscrews for Sale

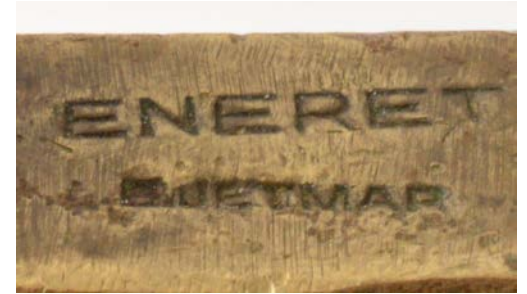
Don Bull

corkscrew@bullworks.net



KFL036 Large Fox. 5". \$95

\$39



KFL047An Art Deco dog marked B.
JETMAR for the maker Jetmar B & Son.
Also marked ENERET for "Rights
Reserved". C.1930s. \$119

\$69



Here's a little story from *Figural Corkscrews* about the next two pages

His big mouth will uncap ale and beer
He has big ears and perhaps looks queer
Pull off his hat and you will see
Just why it is that he's screw-ee

The Jolly Old Topper family was produced by the Steele and Johnson Manufacturing Company located in Waterbury, Connecticut, U. S. A. It was founded in 1851 as the Waterbury Jewell Company and several years later became the Steele and Johnson Button Company. The company produced brass buttons and various metal goods until they went out of business in 1933.

In addition to their Waterbury factory at 779 South Main Street, they had retail stores in Chicago and New York. A 1902 city directory lists the company as manufacturers of brass goods for the plumbing supply trade including screws, nuts, washers, bolts, chains and hooks; gas and electric light fixtures including shade holders and canopies; work for electrical switches; and buttons - military, society, livery, and dress. There is no mention of corkscrews.

The "Jolly Old Topper" figures have a wire helix hidden under their stovepipe hats. The mouth is a cap lifter and the ears are handles for the corkscrew. The bar accessories are cork stopper, spoon, jigger, and cocktail shaker top. Collectors sometimes refer to the "Jolly Old Topper" as a snowman.



Sold

KFL078 Steele & Johnson combination corkscrew, bottle stopper, and bottle opener. The stove pipe hat is the sheath for the worm. \$35

\$19



KFL096 Wooden elephant head. \$19

Sold
\$15



KFL098 Large monkey. Baller Austria. \$135

\$79

See Robinson & Meadows Austrian Figural Corkscrew Design page 136.



KFL102 A running monkey with corkscrew tail. \$85

\$35



KFL104 Monkey -Austria. Not marked. \$85

\$35

See Robinson & Meadows
Austrian Figural Corkscrew
Design page 123.





Sold

KFL105 Brass monkey with forearms as corkscrew and tail as bottle opener. \$15

\$7



KFL106 Cheesy bejeweled monkey. \$15



\$7

Sold



KFL109 A zebra corkscrew with “stripes”
on one side and solid color on the other.
\$59

\$35





KFL114 Silver-plated fox corkscrew. \$79

\$39



KFL119 Art Deco dog marked B. JETMAR for the maker Jetmar B & Son. Also marked ENERET for "Rights Reserved". C.1930s. \$119

\$69



KFL122 Russian made cannon.
A rather interesting design -
the cannon swivels
perpendicular to the base
forming a T-handle. The base
has a cap lifter built in. The
cannon barrel pulls off to
expose the worm. \$15



\$8
Sold



KFL128 Swan opener. \$16

\$9

Worldwide Marine
Operating Conference
Bremen 1958



VERKEER BREMEN



KY87 A Bremen key in a presentation box from ESSO celebrating the World Marine Operating Conference, Bremen, Germany, in 1958. \$139 **\$65**



KY74 Corkscrew key of St. Peter with an unusual bit. \$89 **\$39**



KY126 St. Peter corkscrew key. St. Peter is the patron saint of Bremen. \$69 **\$33**



KY72 A bar set featuring the Bremen Coat of Arms. \$125 **\$49**



LEFT: KEY044 A 3-piece bar set featuring the Bremen Coat of Arms. \$49 **\$29**

RIGHT: KEY045 A 4-piece bar set featuring the Bremen Coat of Arms. \$55

SOLD



LEFT TO RIGHT:

KEY048 Silver-plated key corkscrew. \$25 **SOLD**

KEY049 Silver-plated key corkscrew. \$25

KEY050 Silver-plated Berlin corkscrew key. \$29

KEY051 Corkscrew key of St. Peter with an unusual bit. \$35