

Corkscrews for Sale Tools



Don Bull, P. O. Box 596, Wirtz, VA 24184 USA
email: dbull@bullworks.net

(Please email with alphanumerical listing ID for availability and shipping
– include your name and address)

Click here to return to index page: <http://www.bullworks.net/bullsale/>



KME120 Corkscrew Does it All

Kingston, Ontario, Canada, February 16, 1932 - Kingston's Frederick J. Alderson obtained American Patent No. 1,845,038 for his "Combination Tool." His Canadian patent application was filed on July 23, 1925 and by April 13, 1926, he had a Canadian patent. Alderson said "The objects of the invention are to provide a simply constructed, low-priced, durable, and efficient device." The multi-tool has a bottle cap lifter, a screwdriver, a hammer head, a hammer claw, a knife sharpener, a scale, a corkscrew, a can piercer, ruler, and a door lock. The "Ten in One Tool" is produced by the Tool & Engineering Co., Ltd. in Kingston

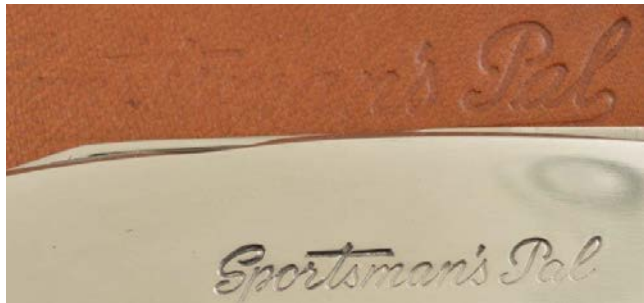
\$75

KME121 Clark and Crume 1904 US Patent Multi-tool with Corkscrew

Multi-tool with corkscrew, can opener, bottle opener, jar opener, and screw driver. Clark and Crume American patent #760, 613, 1904. Marked THE THOMAS MFG. CO, DAYTON, O. U.S.A. PAT FEB 11, 1902, the date of a similar earlier patent without a corkscrew.

\$75





TK85 Sportsman's Pal in a bit tattered original box. \$25



TK19 Wood handle tool holder and handle. The tools are secured in place by the chuck. \$29



TK20 Wood handle tool holder and handle. The tools are secured in place by the chuck. \$29



TK21 Wood handle tool holder and handle. The tools are secured in place by the chuck. No corkscrew. \$29



KTTO76 In this design the sheath serves as the handle when the mating parts are screwed together. Marked A2-70. \$35



KTT023 Tool kit marked UNIPA DRP DRGM. \$25



KTT024 Roundlet tool kit with hammer screwing in the end. The other tools fit in the handle slot to make a T. \$19



CHARLES N. DEWEY
54 WEST ST.
WORCESTER, MASS.

EDWARD ZINN
GERMANY

EDWARD ZINN
NEW YORK

KTT043 Tool kit with Edward Zinn's U. S. Patent No. 941,901 of November 30, 1909 for a tool handle. Tools fit in handle as shown above. Some tools missing. \$45



KTTO76 In this design the sheath serves as the handle when the mating parts are screwed together. Marked A2-70. \$35



KTT055 Roundlet tool kit advertising "Jurid." \$15

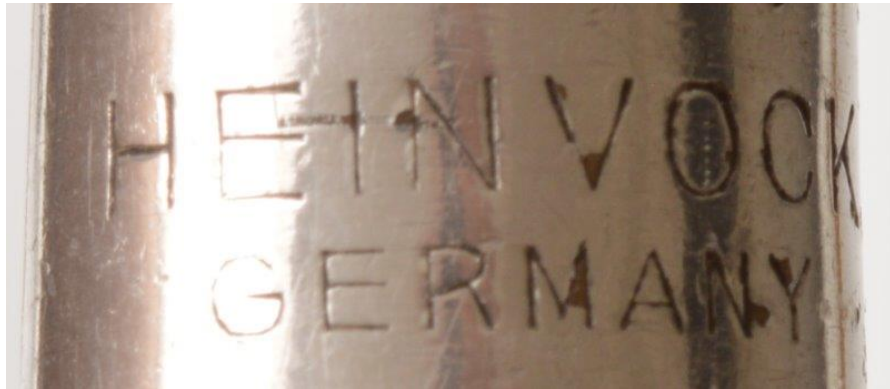


KTT059 Roundlet tool kit marked MADE IN GERMANY. \$15





KTTO61 Roundlet tool kit marked MADE IN GERMANY. \$15



KTT063 "Heinvock Germany" advertising roundlet. \$15



**KTTO65 Roundlet tool kit marked TE-NO FLANSCHENFABR REGIS, S
A. \$19**



**KTT068 Roundlet “With
Compliments from White, Milne &
Co., Dundee” (Scotland). \$19**





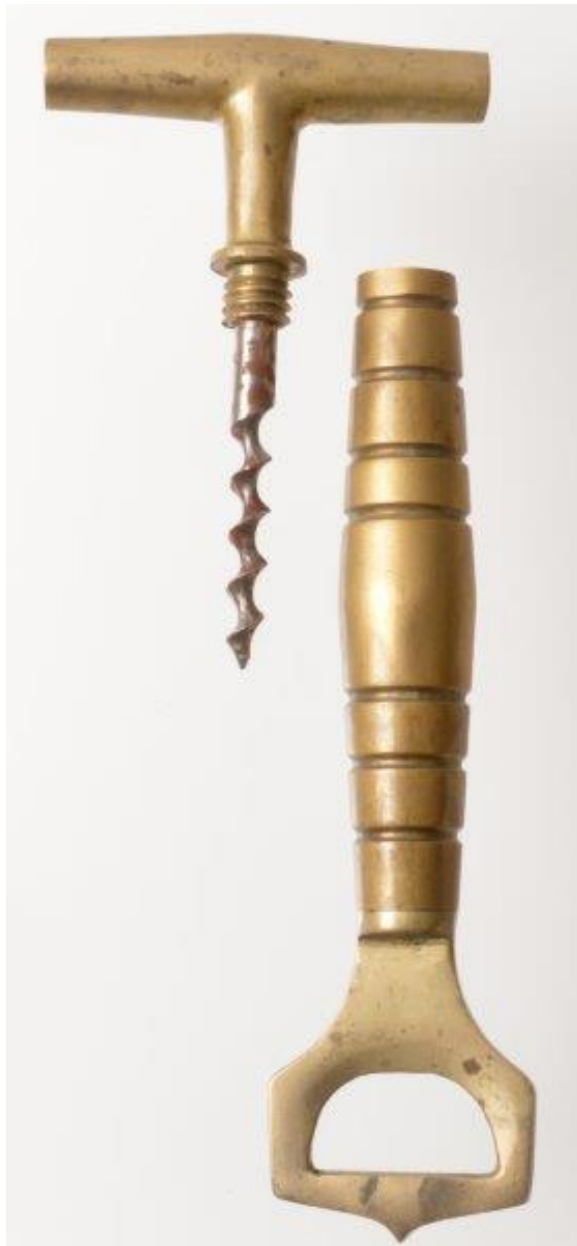
KTT072 Roundlet marked KTD. \$19



KTTO75 German 25th anniversary advertising tool kit.
“Lange & Geilen, Spezialfabrick für Shappingbau, Halle
a/S, Kratt-Schnellbobier.” \$29



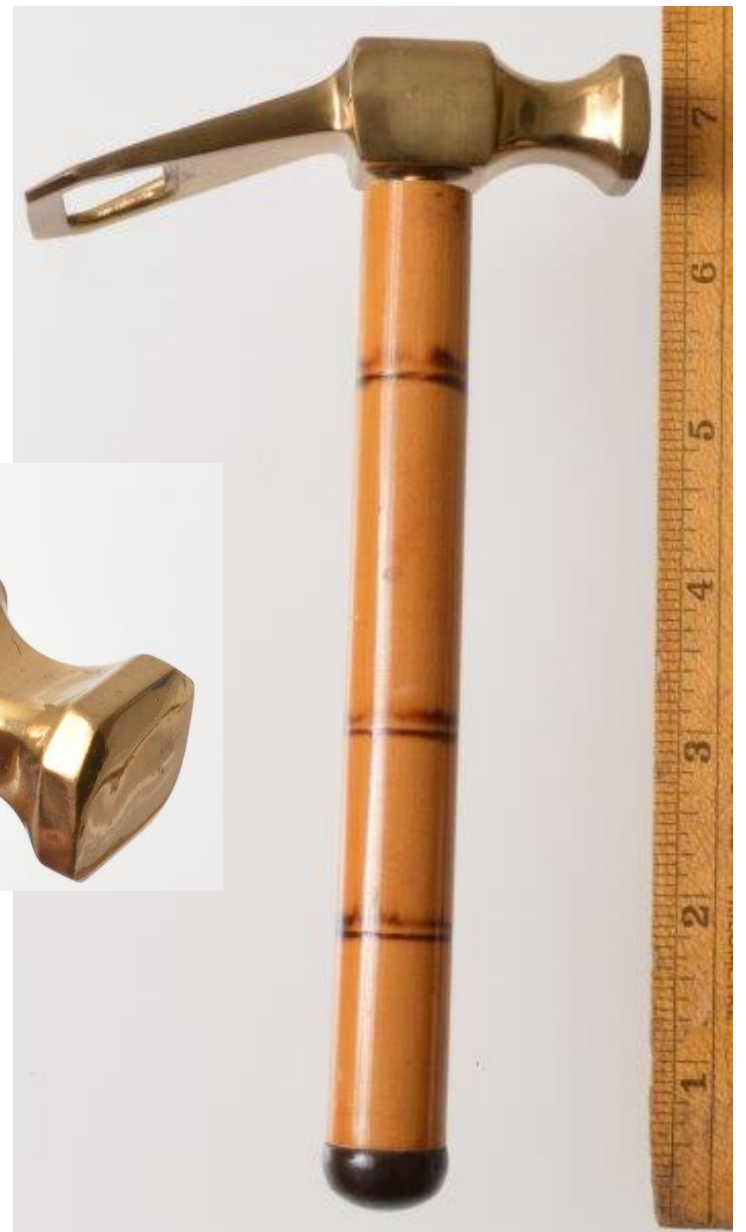
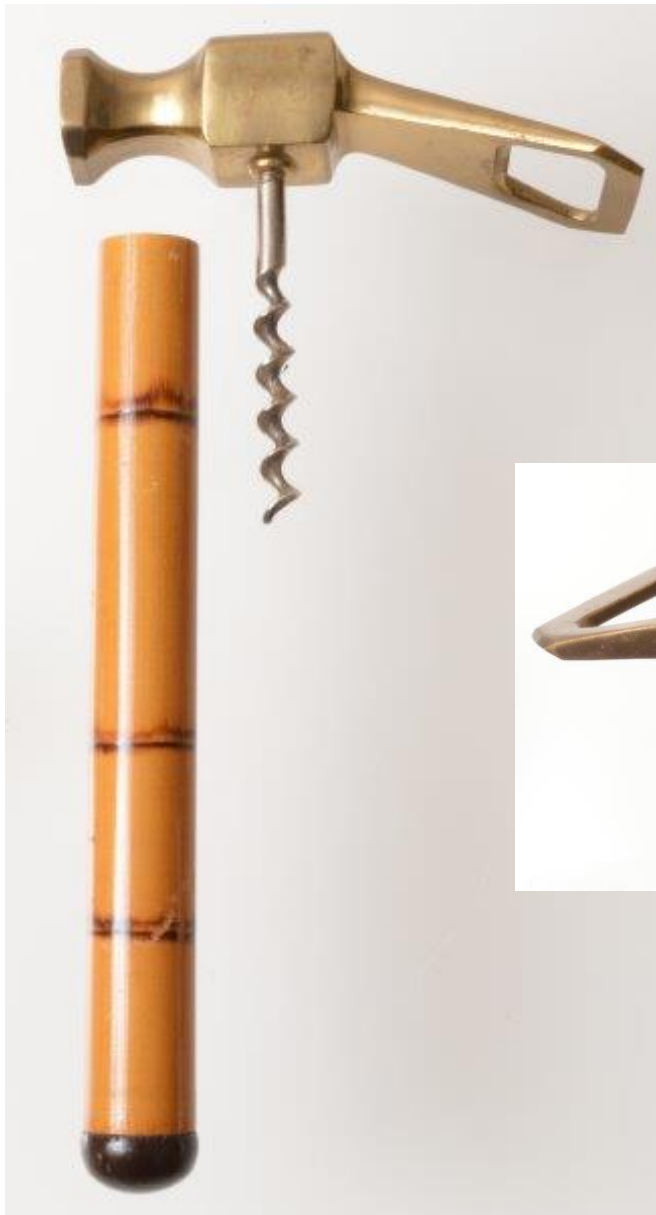
KT002 Combination corkscrew and ice tool. \$15



KT010 Combination corkscrew, bottle opener and ice tool. \$15



KTTO12 Combination bottle opener and ice tool. \$8



KTTO16 Combination corkscrew, bottle opener and ice hammer with
“bamboo” sheath. \$22



KT017 Combination corkscrew, bottle opener and ice hammer with
“bamboo” sheath. \$22