

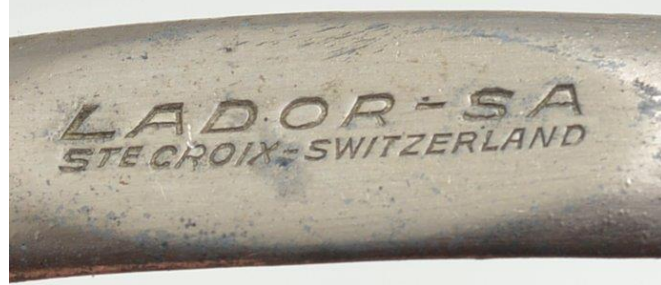
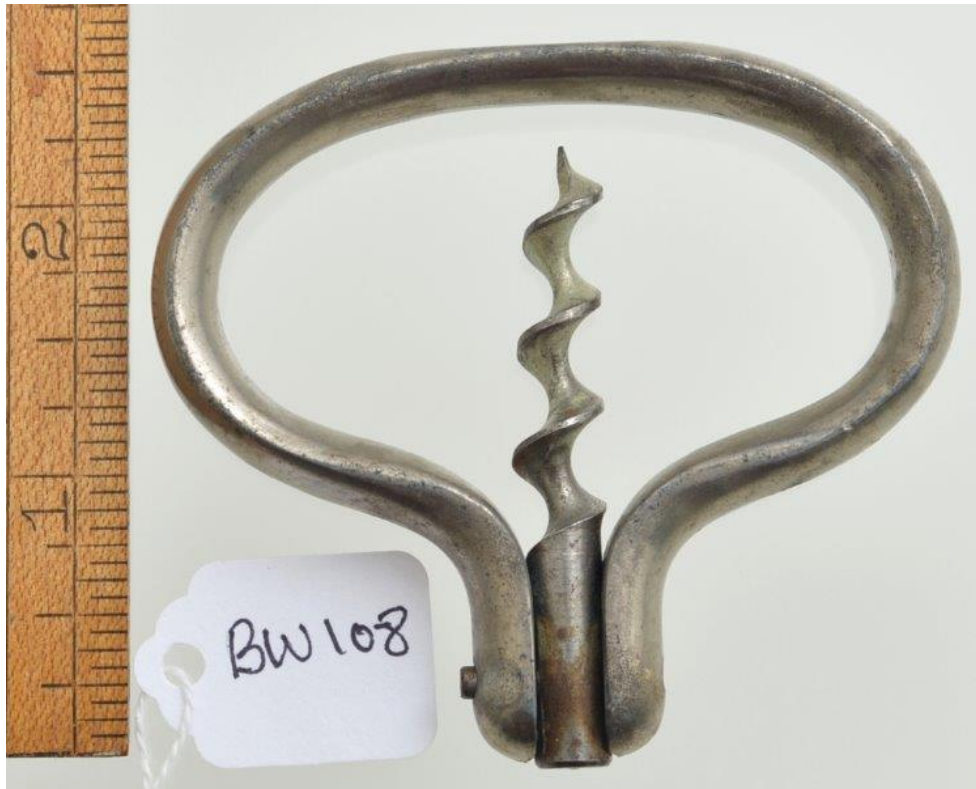
Corkscrews for Sale Switzerland



Don Bull, P. O. Box 596, Wirtz, VA 24184 USA
email: corkscrew@bullworks.net

(Please email with alphanumerical listing ID for availability and shipping – include your name and address)

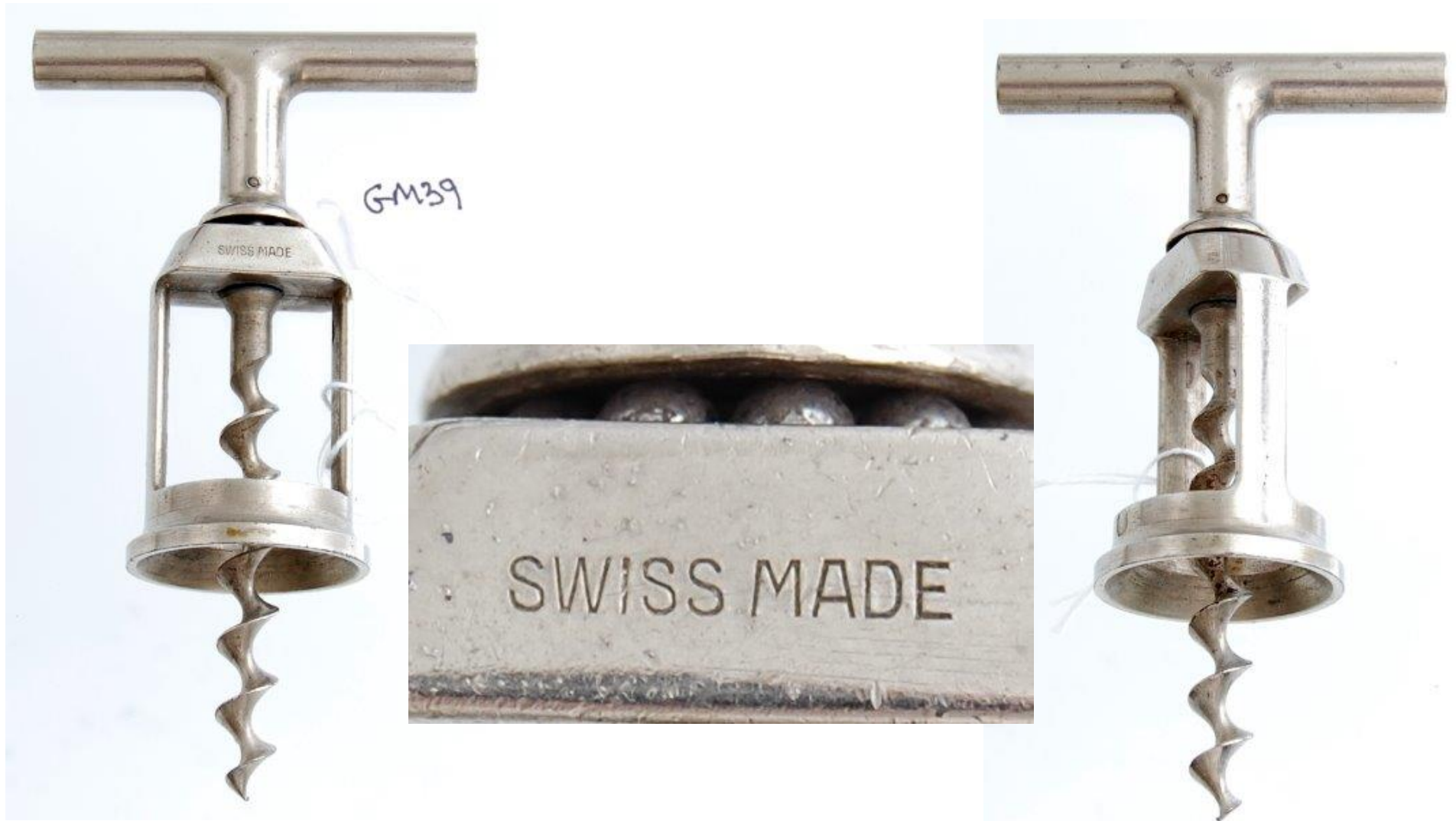
Click here to return to index page:
<http://www.bullworks.net/bullsale/>



BW108 Folding bow marked on LADOR-SA Ste CROIX SWITZERLAND. \$39



DB134 Souvenir of Leysin,
Switzerland. \$29



GM39 Swiss made open frame corkscrew with bearings. \$20



WF52 Waiter's friend marked VOSS CUTLERY CO., SWITZERLAND. \$22



WF127 Waiter's Friend marked UNIVERSAL CUTLERY CO. SWITZERLAND and advertising Ruppert Beer Ale (New York). \$55

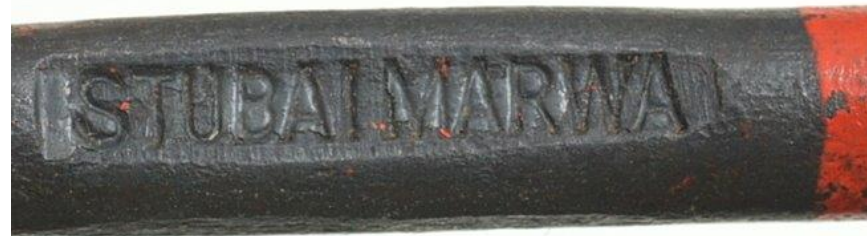


Corkscrew collector Ed Bystran wrote:

In 1960, a Swiss mountain rescue specialist named Erich Friedli invented the first ice screw that was actually twisted into the ice. It looked much like the "Marwa" but was constructed of solid coat hanger-like wire and, while evolutionary, it was difficult to place into dense, hard ice. Another problem was that, although better than an ice piton, it still didn't have good "holding" strength.

The following year (1961) Stubaï introduced the "Marwa" ice screw (Fig. 4) which resembled a corkscrew on steroids and was sturdier than Friedli's screw. It was thicker and performed better, but was still hard to place and somewhat unreliable. Instead of screwing these into the ice you would pound them in with an ice-tool-hammer and then screw them out for removal.

.... The "Marwa" design was only popular in the early 1960's.



KL48 An ice climbing tool marked STUBAI MARWA. \$45



BM27 Marked RAPID SWISS MADE. The Rapid is a modern version of the DON. \$69



BM28 Marked RAPID SWISS MADE. The Rapid is a modern version of the DON. \$69



BM27 Marked RAPID SWISS MADE. The Rapid is a modern version of the DON. The linkage is missing the connection as shown in the photo. \$49