

Corkscrews for Sale



Don Bull, P. O. Box 596, Wirtz, VA 24184 USA
email: dbull@bullworks.net

(Please email with alphanumerical listing ID for availability and shipping
– include your name and address)

Click here to return to index page: <http://bullworks.net/bullsale/>



**A001 German figural picnic corkscrew marked LUNAWERK GERMANY.
The end of the sheath is a combination can piercer and cap lifter. \$175**



A002 Marked ASPREY LONDON and RD NO 691160 (June 30, 1922 English Registered Design by Philip Rolls Asprey). \$89



A003 Stunning picnic corkscrew. Faceted. Superb condition. \$225



A004 Brass corkscrew. Sheath threads into top \$75

Sold



A005 Picnic corkscrew. Very nice. \$79



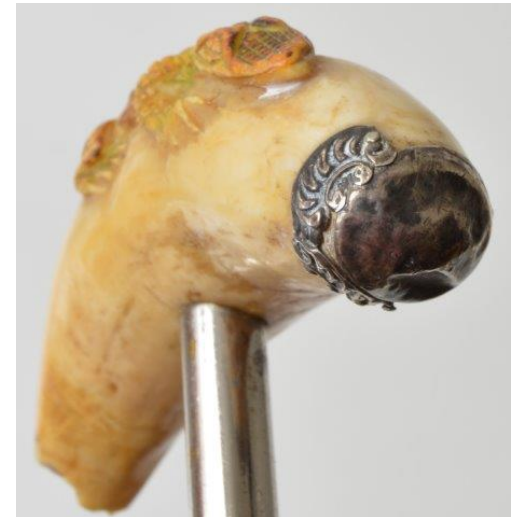
A006 Unusual picnic corkscrew. \$45



A007 Alligator carving. Very large corkscrew – 10" from the front to the tip of tail. \$625



A008 Corkscrew with carved alligator on the top. 6" tall. Back end is chipped. Some damage to silver mount. \$95





A009 Tusk corkscrew with carved alligator on top. \$175



A010 Carved alligator corkscrew souvenir of New Orleans. 5" x 5.5". \$225



A011 Henshall corkscrew with cork grip button. Minor nicks in the end of the handle. \$59



A012 Henshall corkscrew with cork grip button. The handle is a little chewed up on the ends and ribs but still a nice piece. \$55



A013 Nice brass and brush on this corkscrew.
End of the handle is a bit chewed (see photo).
\$45



Sold

A015 Excellent corkscrew marked MURPHY BOSTON. \$59



Sold

A016 Lever corkscrew with roller handle. \$39



A017 Peter MacKenzie's Scotch Whisky Corkscrew. This corkscrew is usually seen advertising James Watson's Vat 69. Hard to find with this advertising. \$45



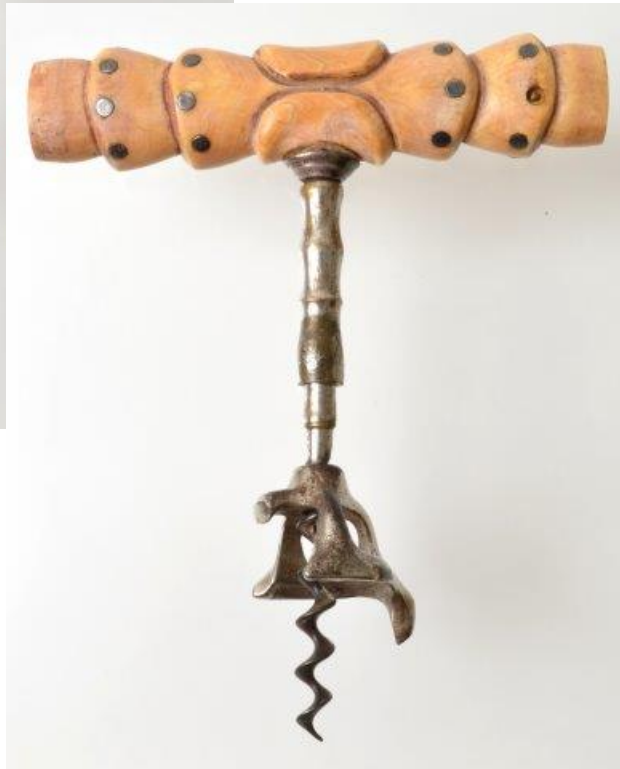
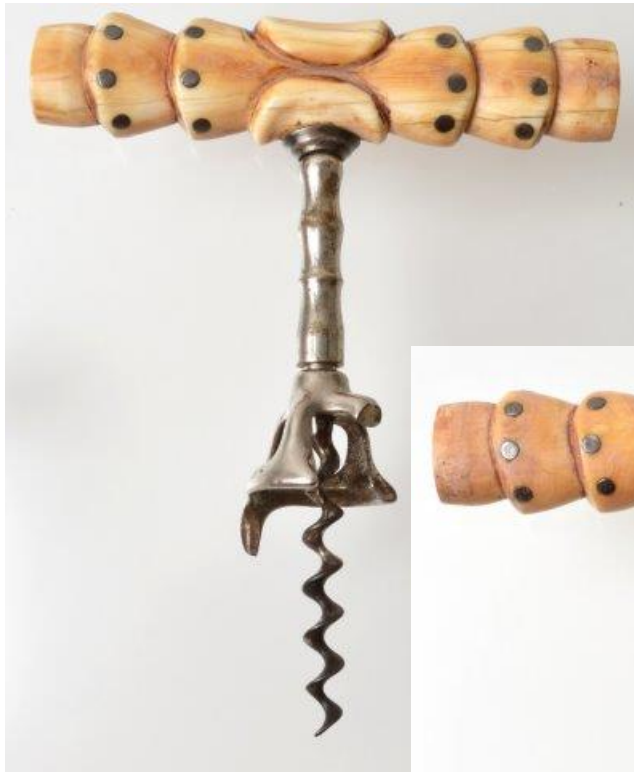
A018 Sanderson's Vat 69
Corkscrew \$29

Sold



Sold

A019 Hugh McBride obtained British Patent No. 7,431 on May 19, 1888 for his "Improvements in or connected with corkscrews and the like instruments" application. McBride wrote that he made the handle to represent a Champagne cork "in order to indicate the purpose for which the instrument is intended." The cork is marked "Dry Monopole." The steel shank is marked M^CBRIDE'S PATENT and 7431. Unusual worm. \$69

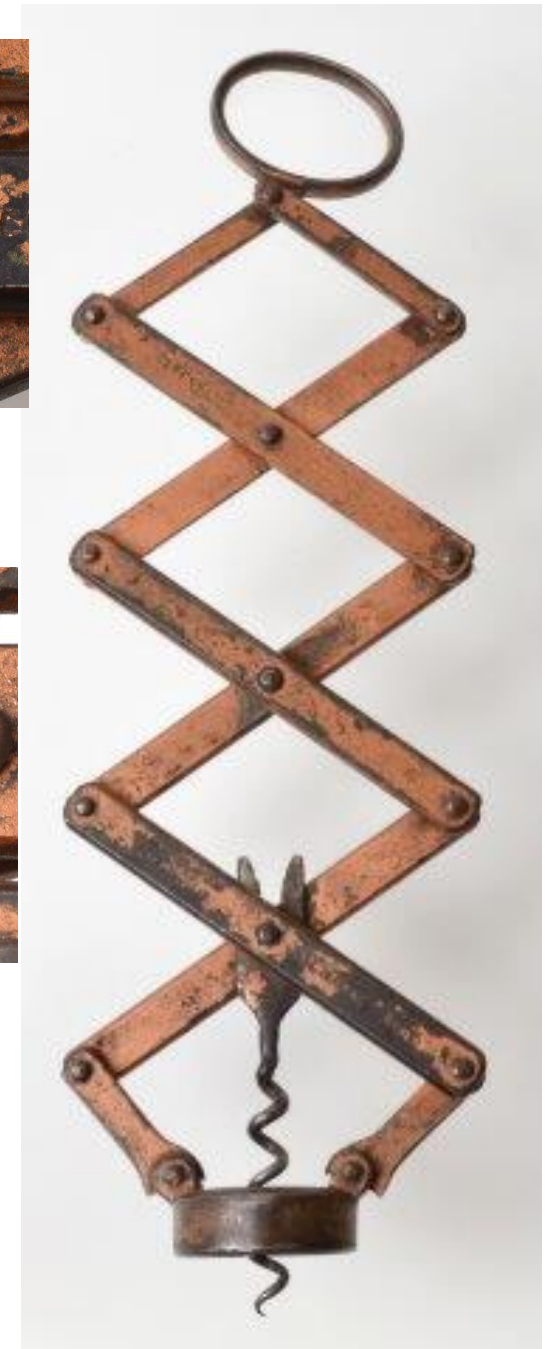


A020 Tusk handle corkscrew with silver studs. The bell is not secured to the shank. \$175

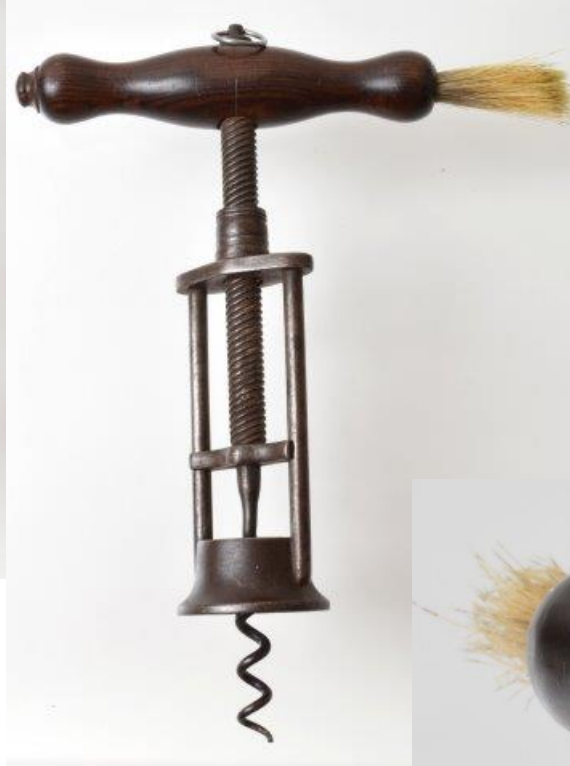


A021 Four pillar rack & pinion corkscrew. Nice wood handle with one very small crack. Missing brush. The pinion handle is steel. Works smoothly \$250

Sold



A022 Marshall Wier's 1884 concertina corkscrew patent. Lettering strike is fair. \$49 **Sold**



A023 Two pillar corkscrew.
Excellent wood handle. Very
nice steel frame an smooth
mechanism. \$375

Sold



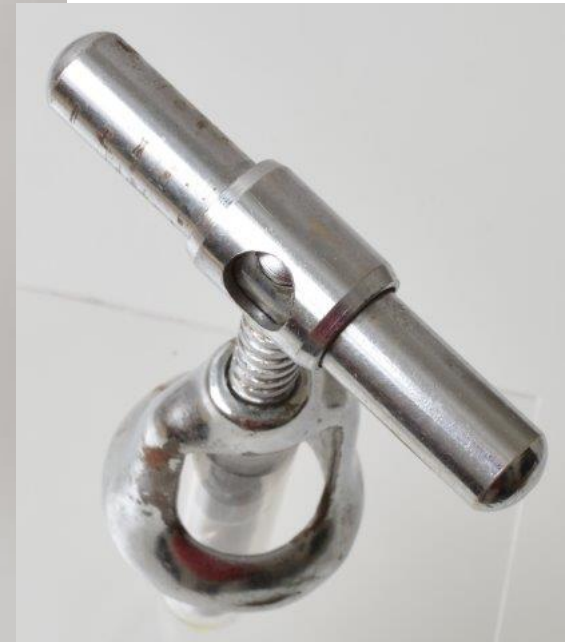
A024 Corkscrew with brush and foil cutter. A beauty. \$55



A025 Ornate corkscrew with Gorham
mark. \$145

Sold





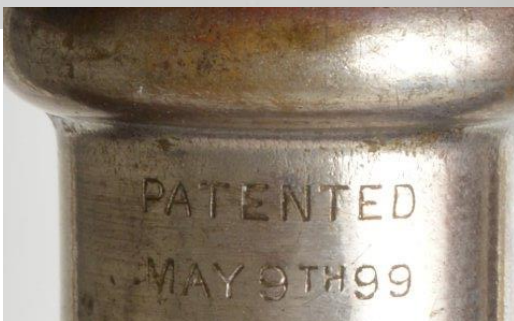
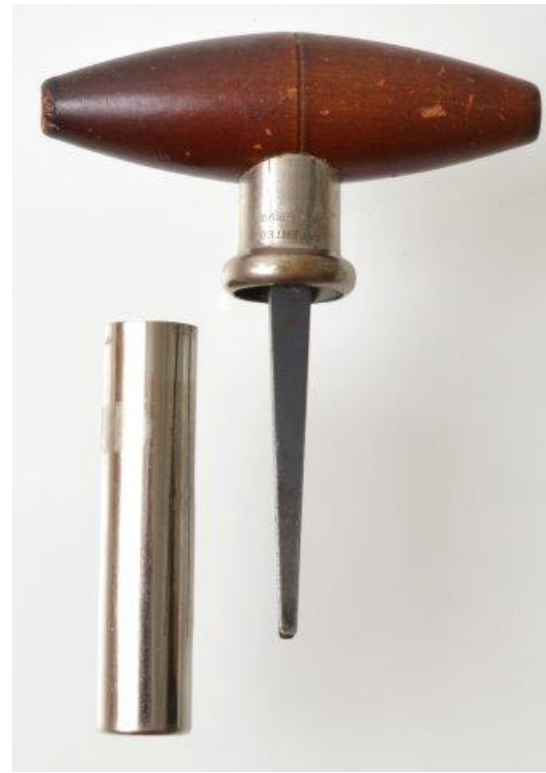
A026 Williamson 1946 “Burgundy” corkscrew. \$20



A027 Charles Chinnock's May 27, 1862 U. S. Patent Number 35,362. Not marked. Beautiful – flawless. \$75



A028 Coney's Patent. Outstanding corkscrew/codd bottle opener. \$49

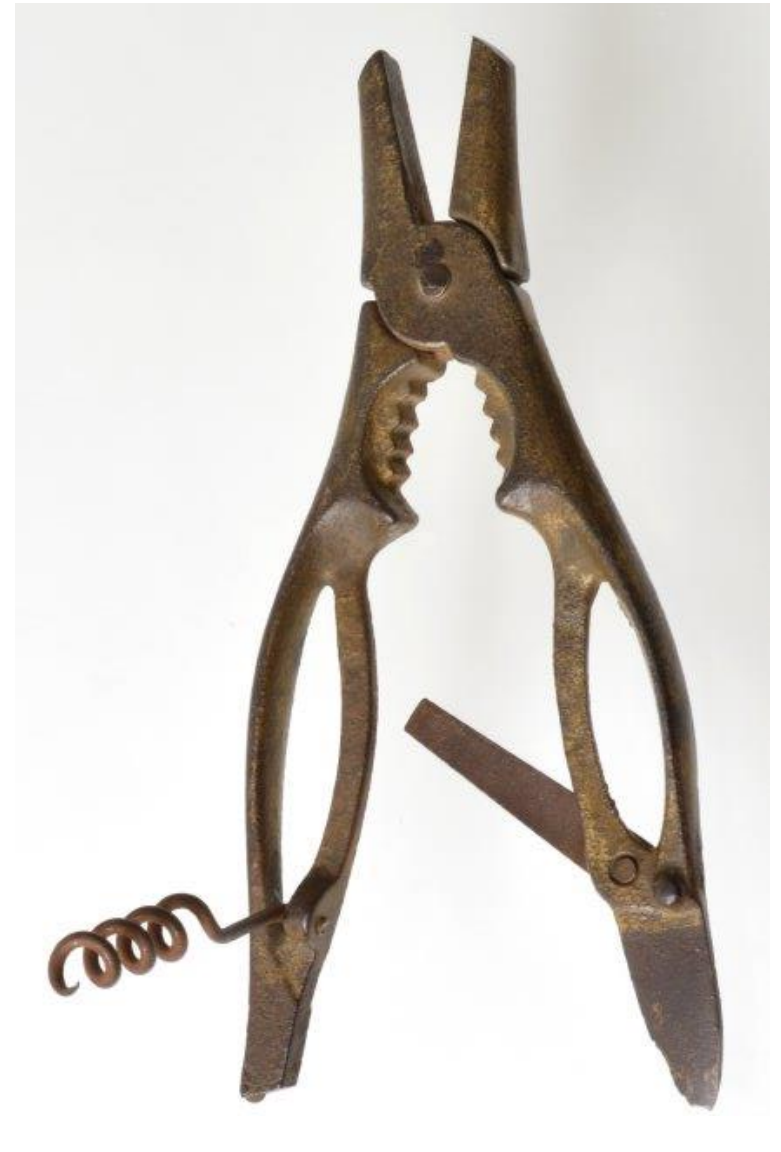


A029 Maschil Converse's U. S. Patent No. 624,457 of May 9, 1899. Marked PATENTED MAY 9th, 99. Advertising "Elmore bourbon, Arthur Lehmann & Co., Peoria, Ill." \$49



A030 Corkscrew marked BIRKS STERLING
on one of the end rings \$75





A031 Multi-tool with corkscrew, glass cutter, pliers, and more. \$59

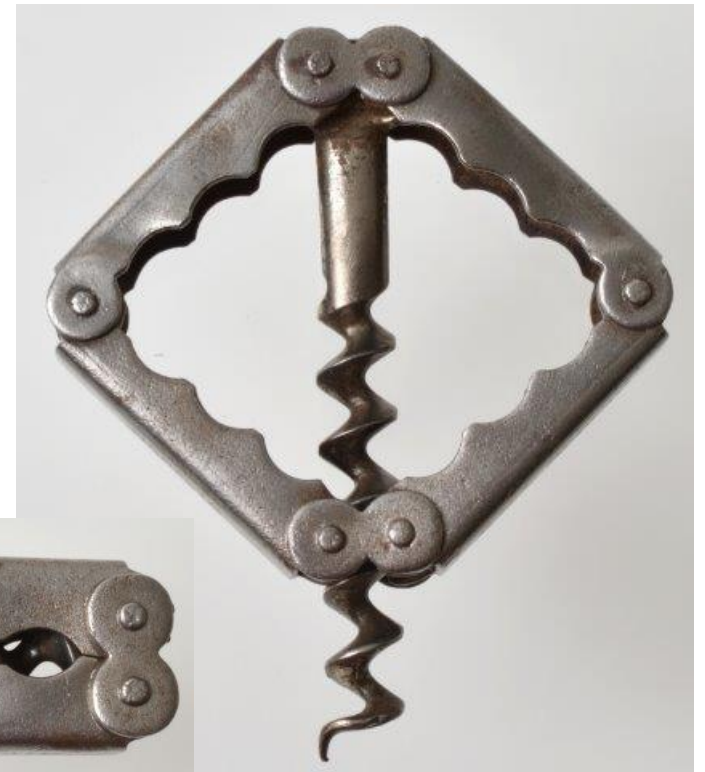


A032 Edmund Jansen's German Registered Design No. 6145 of June 27, 1892, for a corkscrew which slides out of a channel formed by folding sheet metal into a rectangle. One end and half of the underside are left open for the sliding mechanism. A backspring is located in the top of the handle and attached to it is a worm with sliding mechanism. The worm slides out the end and is turned perpendicular to the handle locking with the backspring. Marked G. M. PATENT NO. 6145. \$69



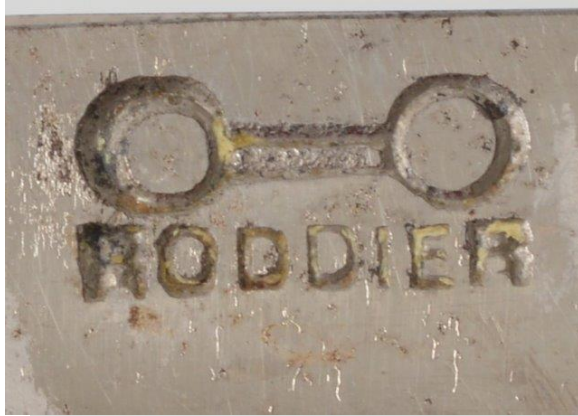
Sold

A033 Very hard-to-find 1891 Davis patent with image of Columbus and "Columbian Exposition Chicago USA 1893." \$95



A034 Holweg patent marked PATENT APPLIED FOR, MADE ABROAD, and MAD IN GERMANY. \$59

Carl Hollweg registered his design for a collapsing corkscrew on November 7, 1901 in Germany (No. 171,941). He had not patented the corkscrew in Germany but it had already been patented in England (1890) and in the U. S. A. and France (1891).



A035 Crescent wrench with corkscrew and additional tools. On June 27, 1928, Jean-Albert Soustre was granted French Patent Number 645,624 for his "*couteau à usages multiples avec clé a molette.*" On June 30, 1931, he obtained an American patent (No. 1,811,982) for his tool entitled "Knife adapted for multiple uses and comprising a monkey wrench." Marked RODDIER, LE COUTEAU CLE and MULTIPLE DEPOSE. Outstanding condition. \$89



Sold

A036 Double helix with wood handle. James Wilson's English Patent No. 858 granted on March 5, 1877. Marked S PATENT. \$59



A037 Norwegian patent by Paul Sharsten. The ring in the middle of the sheath fits the inside of the top of the cap lifter to serve as the handle. . The cap lifter is marked PAT. 38579. \$39



A038 1922 Norwegian patent by Paul Sharsten. The ring in the middle of the sheath fits the inside of the top of the cap lifter to serve as the handle. The sheath is marked 8305 on one side and N.M. 8305 on the other. \$55



A039 Large Erotic Corkscrew.

Spread legs with male and female genitalia. 4.5" spread. \$95



A040 Corkscrew in the shape of a seltzer dispenser. \$75

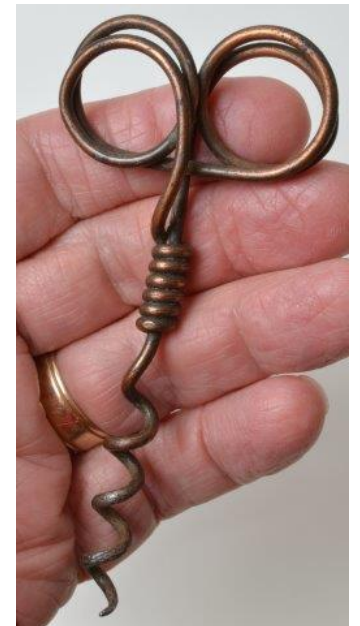


Sold

A041 Williamson patent cellarman type
corkscrew. Marked on the bottle of the
cutter/cap lifter WILLIAMSON CO.
NEWARK N J PATENTED \$49



A042 Candle snuffer with a corkscrew shaped top. Unusual go-with.\$39



A043 Copper-plated “Eyeglasses” Corkscrew. All one piece of twisted wire! \$25



A044 Michaud Bros Finest Wines Liquors Corkscrew. \$22



A045 Gun tool. \$35



A046 US Patent 1,680,291, Thomas Harding, 14 Aug 1928. Marked PAT. NO 1680291 on one side and DESIGNED BY AMERICAN PLATE GLASS CO. BOTTLE DIVISION N.Y. U.S. PATENT NO. 1680291 on the other. \$35



Sold

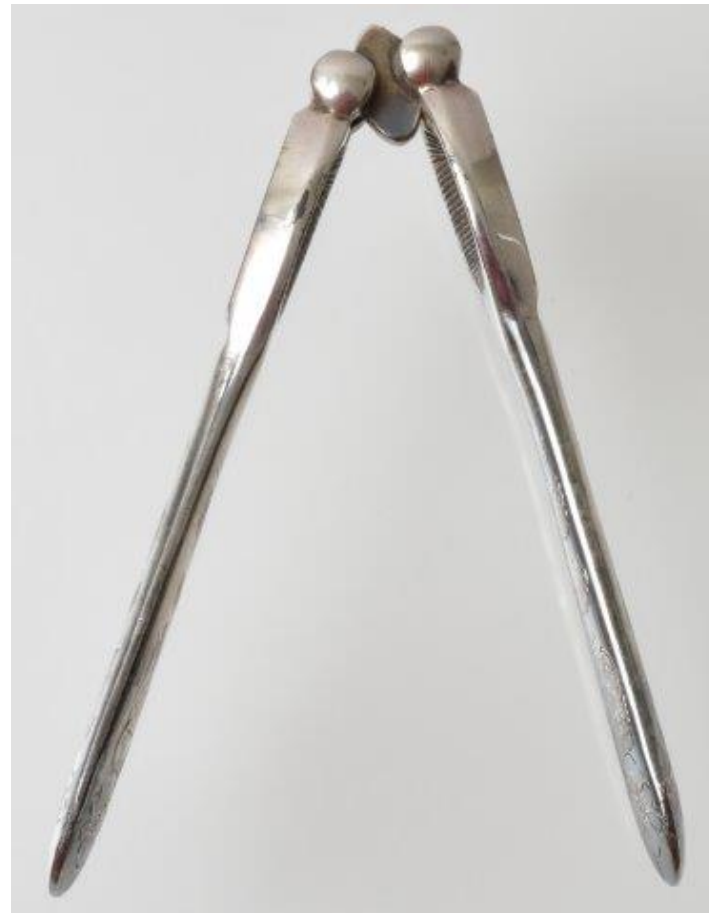
A047 Thorne's Whisky corkscrew in excellent condition. \$65



A048 Unmarked Goodyear patent corkscrew. \$25



AO49 Engraved GWEN with monogram G C B. Marked STERLING 56. \$145



A050 Nut cracker. Very nice engraving. \$35



A051 Nut cracker marked ENGLAND inside. \$35



AO51 Brass leg. \$75



A053 Corkscrew with celluloid scales advertising "Lillet Aperitif / Fernandez Sherry. \$39



A054 Four finger pull with Perille mark. \$29

Sold



Sold

A055 Folding corkscrew with capsule cutter. \$25



A056 All steel corkscrew with spike advertising "Bulloch Lade & Co. Ltd., Extra Special Gold Label" (Scotch Whisky). \$49



A057 Mid-18th Century corkscrew with cutter and Archimedean worm. \$145



A058 Peg & Worm corkscrew. \$75



A059 Peg & Worm corkscrew. \$45

Sold



A060 English peg and worm advertising "Crumpsall Cream Crackers." \$75



A061 Peg & Worm corkscrew. \$75



A062 Rack & pinion corkscrew marked PRESSURE CAST IN MAZAK and WITH THE COMPLIMENTS OF IMPERIAL SMELTING CORPORATION LIMITED. Meshing gears totally enclosed in handle. \$55



A063 A collector speculated
“I suspect a vegetable cutter
it makes a continuous
ribbon.” \$49





Sold

A064 A bayonet fit sword / letter opener with cigar cutter. Alur Griep applied for a patent in Germany on March 29, 1949 for his cigar cutter (*Zigarrenabschneider*) design. The sliding cutter is pulled up and the cigar tip is inserted into a hole. The cutter is now depressed and the tip is cut. Patent No. 887,711 was published August 27, 1953. The holster for the sword has a magnifying glass. \$59 with holster.



A065 English handle with interchangeable tools. Marked EDWARD PRESTON & SONS and trademark EP. The thumb screw on the end secures the worm on one and the chisel on the other. For both: \$225





A066 Holweg patent marked PATENT APPLIED FOR, MADE ABROAD, and MADE IN GERMANY. \$49

Carl Hollweg registered his design for a collapsing corkscrew on November 7, 1901 in Germany (No. 171,941). He had not patented the corkscrew in Germany but it had already been patented in England (1890) and in the U. S. A. and France (1891).



A067 Lacquered *Papier-mâché* snuff box with *The Bees Wing* painting attributed to the British artist William Harris Weatherhead (1843-1903) . It is a portrait of Prince Regent George. The bees wing refers to the sediment at the bottom of the bottle. “Beeswing” is U. S. registered trademark 36,764 file by Ogden’s Limited, Liverpool July 18, 1901 for “Smoking-tobacco, chewing-tobacco, cigars, cheroots, cigarettes and snuff.” There is a corkscrew on the table. There is a little damage to the rim (see photo) ; \$65