

French Corkscrews for Sale

Don Bull, P. O. Box 596, Wirtz, VA 24184 USA

email: dbull@bullworks.net

See reduced prices in RED.

(Please email with alphanumerical listing ID for availability and shipping
– include your name and address)

Click here to return to index page: <http://bullworks.net/bullsale/>



FR029 Rack and Pinion corkscrew marked J-P DEPOSE PARIS. \$65

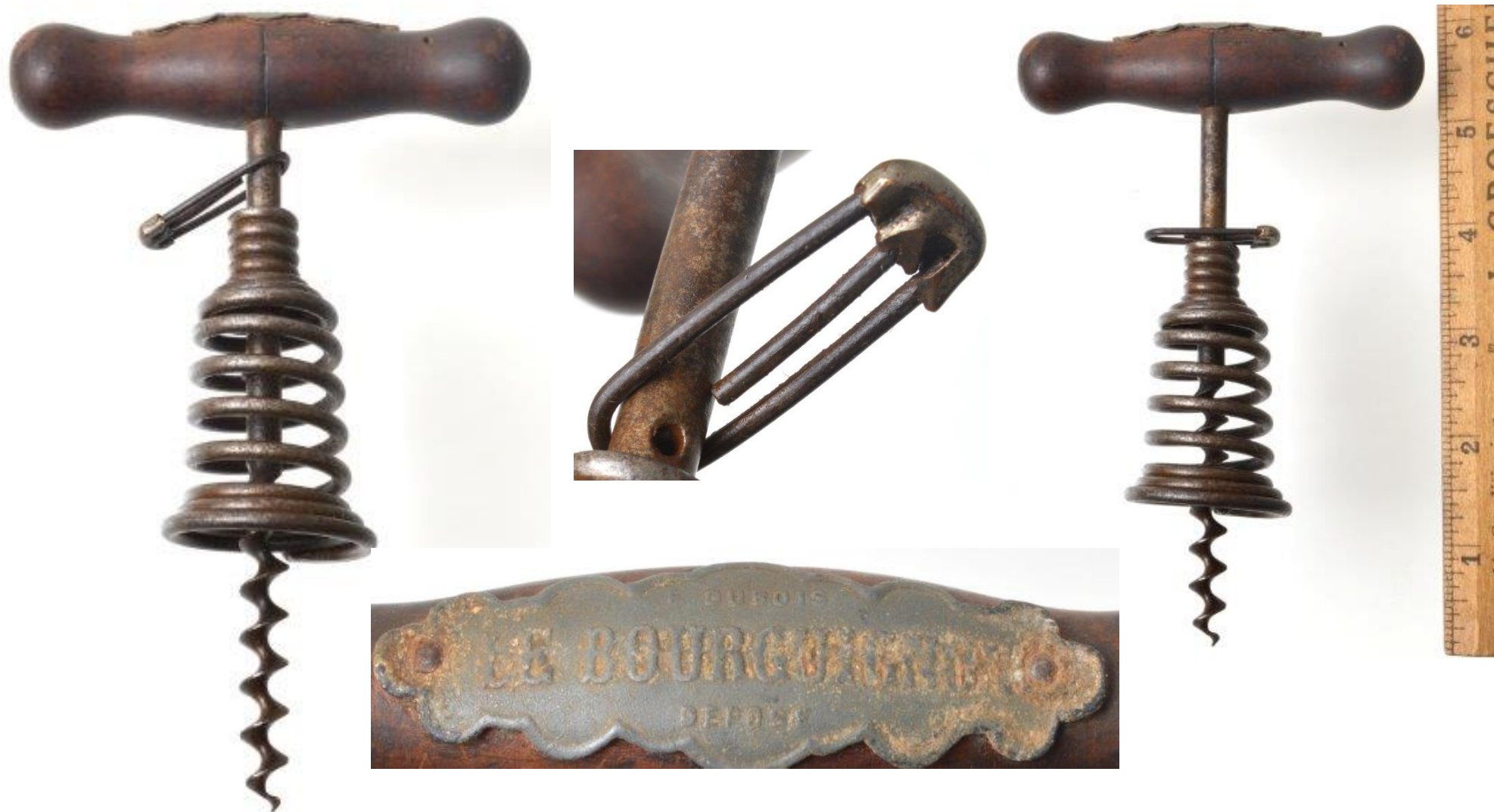
\$39



FR030 Rack and Pinion corkscrew marked MODELE DEPOSE MADE IN FRANCE.

\$75

\$39



FR038 French spring barrel corkscrew with a paper clip retainer. The spring barrel is locked with the clip while the screw is inserted into the cork. Once the cork is out, the spring barrel is freed to aid in removing the cork. Based registered designs by W. Sommers in Germany (German Registered Design No. 35,418, January 14, 1895 and German Registered Design No. 114,369, April 11, 1899). The plate on the top reads "Dubois Depose Le Bourguignon." \$125 **\$69**



FR046 French corkscrew with flynut fixed to frame. Marked as shown. \$35

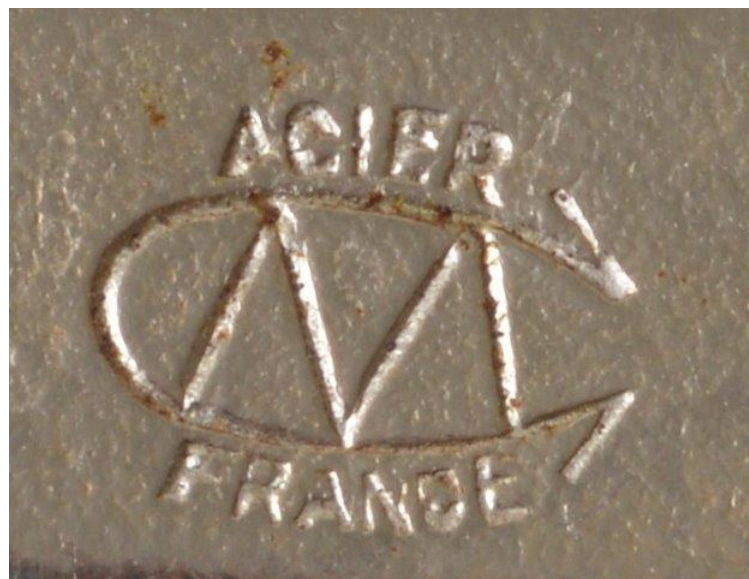
\$25



FR083 French multi-tool with can opener, folding corkscrew, and sardine opener. WCC page 140. \$75 **\$39**

Compound Levers (lazytongs / concertina

The arms of these corkscrews provide the force multipliers to reduce the pulling strength required to remove the cork. The more numerous and longer the arms, the less the effort required. The mechanical advantage can be easily measured by measuring the distances travelled by the worm and the handle. By holding the worm when the levers are closed, pulling the handle makes the benefits clear. For a comprehensive look at compound levers, see *Les Tire-Bouchons Extensibles* by Jacques Lapierre and Hans J. Türler, Groupe Horizon, 2010.



FR056 Lazytongs marked YPRIM and ACIER FRANCE. \$75 **\$39**

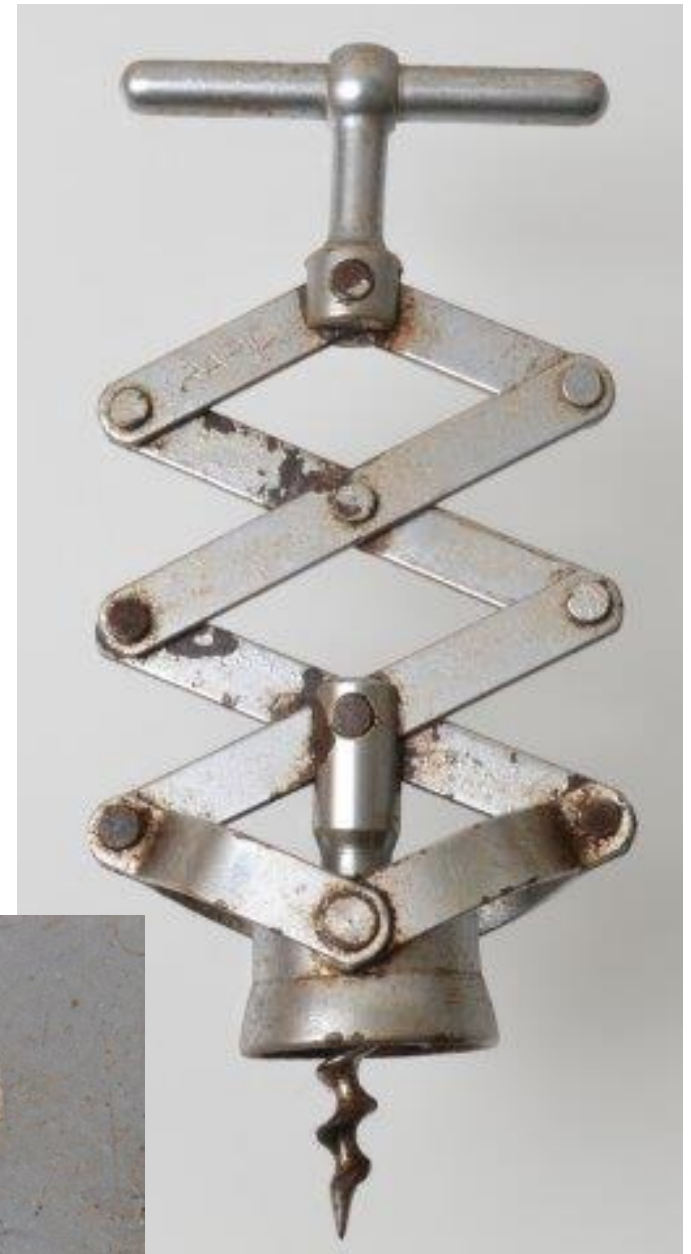
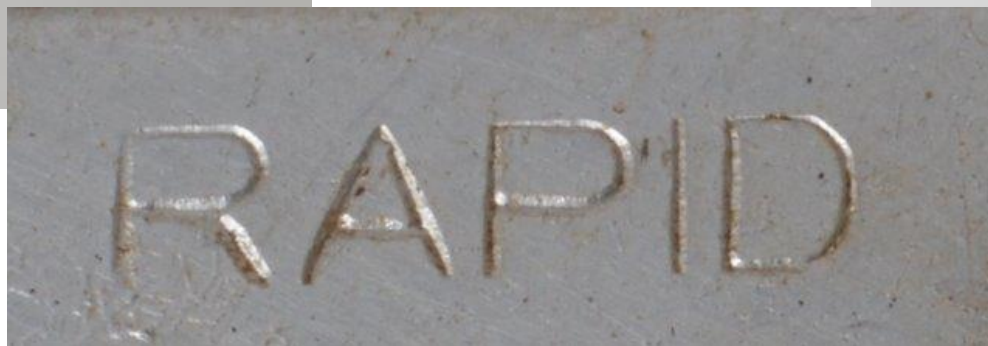
Les tire-bouchons extensibles by Lapierre & Turler figure 259



FR066 Debouchtout. Marked as shown. \$45

\$29

Les tire-bouchons extensibles by Lapierre & Turler figure 131



FR079 Marked RAPID. \$50 **\$29**

Les tire-bouchons extensibles by Lapierre & Turler figure 274



FR080 Advertising
"Jaboulet Vercherre" wine.
\$75

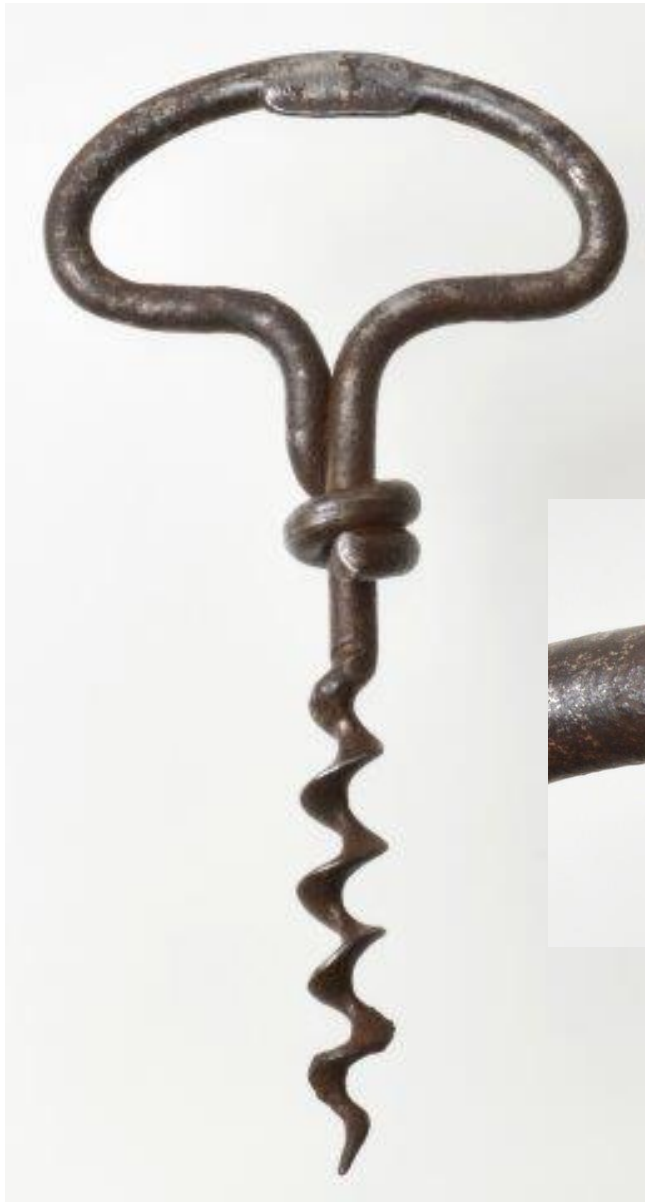
\$45





FR106 Four finger corkscrew marked A. P. DEBOUCHOIR. \$45

\$29



FR107 Combination corkscrew and bottle cap lifter. \$35

\$22



FR111 Open handle two finger pull. \$35 **\$22**



FR129 T Handle corkscrew. \$45

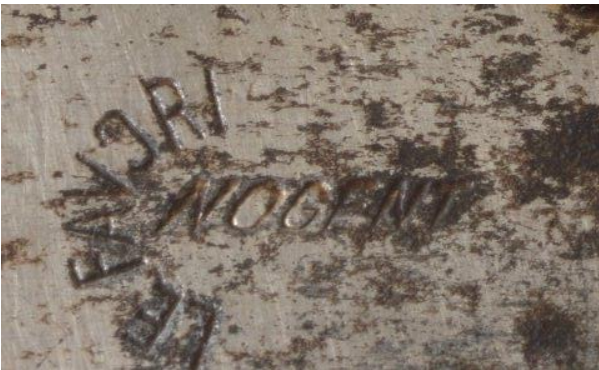
\$29



FR130 Combination can opener, bottle opener, tin opener (sardines" and corkscrew. Marked DEPOSE FRANCE. Advertising "H. Germain Champagne, Rilly." \$35 **\$22**



FR131 Crescent wrench with corkscrew and additional tools. On June 27, 1928, Jean-Albert Soustre was granted French Patent Number 645,624 for his "*couteau à usages multiples avec clé a molette*." On June 30, 1931, he obtained an American patent (No. 1,811,982) for his tool entitled "Knife adapted for multiple uses and comprising a monkey wrench." Marked K T K BREVETE S.G.D.G. Rust, pitting, dented. \$100 **\$39**



Sold

FR132 French multi-tool with sardine can opener, swivel-blade can opener, cap lifter, and a waiters' type corkscrew. Marked NOGENT FAVORI. Rust, pitting and worm does not close all the way. \$75 **\$35**



FR135 Combination corkscrew, wire cutter and cigar cutter advertising "Champagne E. Mercier & Co." and marked DEPOSE. \$150

\$85

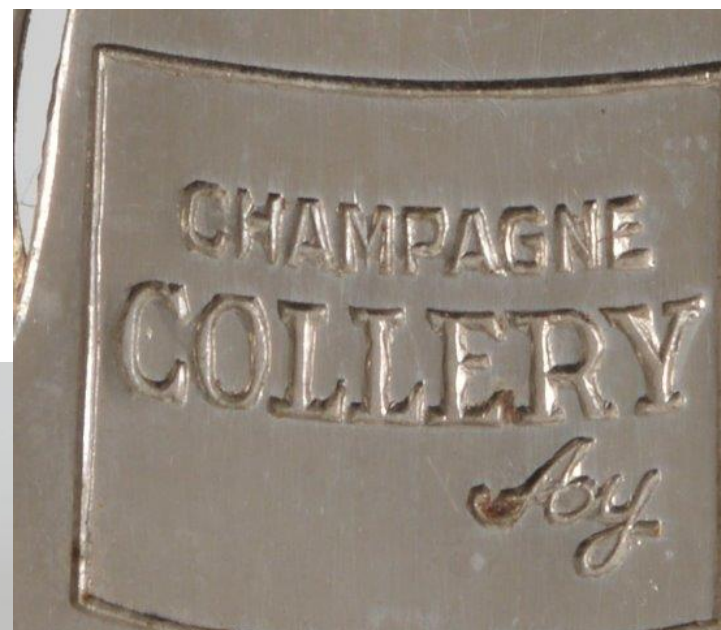


FR142 A French single prong cork puller by Eugène-Adrien Mestre marked B^{TE} S.G.D.G. The serrated blade is attached to the handle by a screw to allow replacement in case of breakage. The blade is shaped to fit the bottle's neck and has teeth in it to better grab the cork. WCC page 297. \$525 **\$299**



FR149 Picnic corkscrew marked L H DEPOSE for Louis Houy. Second half 19th century. \$225

\$125



FR156 Champagne bottle shaped knife corkscrew with advertising and mark as shown. \$125

\$75



FR160 Martinaud's 1919 French patent combination waiter's friend and sardine can opener. Marked LE TRUC and C.M. PARIS BTE S.G.D.G. Rust, pitting. \$150

~~\$150~~
Sold



FR161 Pocket knife with master blade and corkscrew advertising "Cognac Frapin."
Celluloid scales. Excellent. \$175 **\$99**



FR165 Six tool knife with celluloid scales. Master blade marked BARGEON THIERS. \$125 **\$89**



FR168 Knife/Waiter's Friend in Champagne bottle shape advertising Champagne Mercier Epernay. Celluloid Scales. \$125

\$89



FR170 Italian six tool knife plus shell extractor for 12 & 16 cal. Marked on the master blade A CENTAZZO & Fli MANIAGO. \$150

\$85



FR174 All cast brass corkscrew with kissing mystical figures. \$55

\$35



FR178 Wire & cigar cutter marked BTE S.G.D.G. with JB and Cognac bottle depiction. \$35

\$22

Sold



FR185 Knife/Corkscrew marked BESSET with horse head.
No chips or cracks in scales. \$125

\$65



FR187 Laguiole knife/corkscrew marked VERITABLE LAGUIOLE. Very good condition. \$135

\$75



FR188 French knife with wood scales marked HORY and DEPOSE. Early 20th century.
Worm is loose. No snap to blade. \$45 **\$29**



FR189 Six tool knife with horn scales. Damage to scale.
No snap to worn master blade. Not marked. \$20

\$15





FR190 Unmarked pocket knife
with 24 tools. Mother-of-Pearl
scales (cracked both sides). 4"
closed. \$250

\$145





FR209 Debouchtout. Marked as shown. \$35

\$22

Les tire-bouchons extensibles by Lapierre & Turler figure 131



FR213 Mestre 1873
French patent. Screwless
extractor with hook. Not
marked. \$325

\$189



FR217 T handle corkscrew with advertising as shown. \$75

\$45

The “CC page xxx” on the following Champagne taps and tools refers to the page where shown in *Champagne Collectibles* by Bull and Paradi.



FR247 Spritzer tap marked GILLES BREVETE S.D.G. A PARIS with a trademark. CC page 268. \$145

\$89



FR249 Champagne tap with internal spring valve. Marked
BTE S.G.D.G. PARIS and J D (for J. D. Depagne). CC page 264.

\$125

\$79



FR250 Wire and cigar cutter advertising Burgeff Grün. \$15

Sold

\$9



FR252 Long tap equipped with a pump to create pressure in the bottle when the natural carbonation is gone. Rrched spout, grape vine decoration, pump (plunger) extension on top. Marked EB BTE SGD. CC page 284. \$375

\$179



FR255 Long tap with serpent spout. CC page 283. \$45

\$25



FR256 Long tap with serpent head spout and fish tail valve. CC page 284. \$95

\$69



FR257 Long tap with serpent head spout. CC page 284. \$75

\$45



FR258 Tap with serpent spout. Perille mark on the valve handle. \$95

\$69



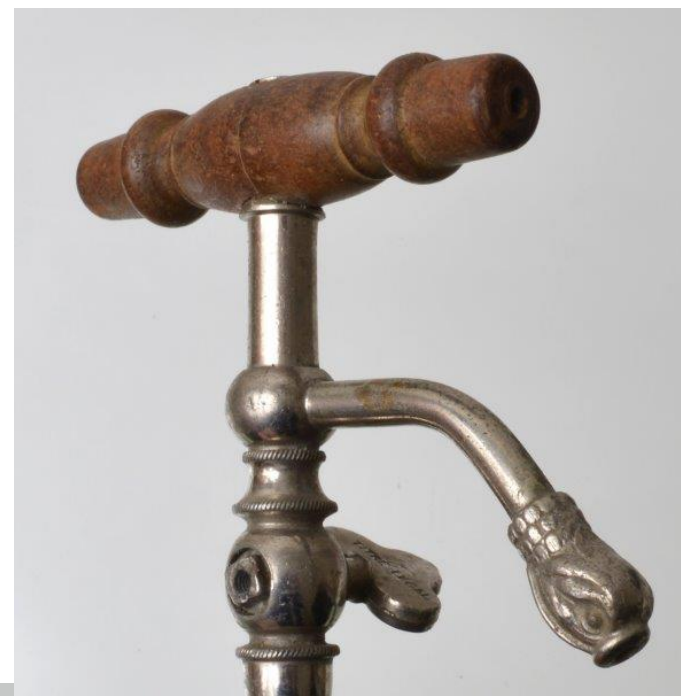
FR259 Simple 15" long tap. \$65

\$35



FR262 Wood handle tap with serpent head spout. Fish tail valve. CC page 281. \$85

\$45



FR263 Wood handle tap with serpent head spout marked TITRE LEGAL. CC page 281. \$85 **\$59**



FR264 Wood handle tap with serpent head spout. Fish tail valve. CC page 281. \$85

\$75