

# Fabulous Finds

Don Bull, P. O. Box 596, Wirtz, VA 24184 USA  
email: [dbull@bullworks.net](mailto:dbull@bullworks.net)

(Please email with alphanumerical listing ID for availability and shipping – include your name and address)

Click here to return to index page:  
<http://bullworks.net/bullsale/>



LB01 Fabulous Tiffany  
Corkscrew Monogrammed (see  
photo) Well-Marked TIFFANY &  
CO. MAKER STERLING. The  
condition is superb! \$425

**Sold**





LB02 The carved wooden bear is the barrel for this double action corkscrew. See *World-Class Corkscrews* by Bull, Giulian, Paradi, page 177. \$275





LB03 Corkscrew and opener set in velvet lined fitted box. The corkscrew is marked MADE IN ENGLAND REGIS PLATE REG<sup>D</sup>. Regis Plate is a trademark of Suckling Ltd. of Birmingham (1895-1965). *World-Class Corkscrews* by Bull, Giulian, Paradi, page 158. \$175





LB04 A charming dancing couple corkscrew by Patrick Meyer. **Patrick Meyer** was born in the Eastern part of France, in a small town close to Strasbourg in the Rhine Valley - a stronghold of one of the oldest Jewish communities in Western Europe. With a Catholic mother and a father with a Jewish ancestry, he grew up with a strong interest in Jewish and ancient history around the Mediterranean Basin, seeking a spiritual connection with his Jewish roots. As a 12-year-old student, he began a life-long infatuation with classical studies, and he immersed himself into Latin, Greek, and French philosophy and literature. In the mid-90s, Patrick relocated to San Francisco, California, where he successfully established himself as a metal sculptor and designer, specializing in Judaica and pewter items for the home. Patrick draws his inspiration from nature, primitive forms, and modern art. He works with high-grade lead-free pewter. \$125



LB05 1892 Christopher  
Columbus Roundlet Corkscrew.  
A souvenir of the 1892 Chicago  
World's Fair. It is marked  
COLUMBUS SCREW 1892  
CHICAGO 1892 PAT. APPL'D  
FOR. 3.25" \$175

**Sold**







LB06 Personalized (W. V. Hyland) six tool knife. Marked H. BOKER & CO'S IMPROVED CUTLERY with tree brand symbol. Mother-of-Pearl Scales Small repair (see photo) on one side of the MOP scales. Excellent snap..W. V. Hyland was the general manager of the Ligonier Valley Railroad (Pennsylvania). \$275



LB07 Stag / Antler handle Corkscrew  
with cigar cutter 9" \$225







LB08    Gorgeous 1886 Thiéry and Croselmire. On January 5, 1886 Edward Thiéry and Charles Croselmire were granted U. S. Patent No. 333,697 for their “Article of jewelry and method of ornamenting the same.” Designs were cut into the silver after it was electroplated to an object as on this corkscrew.    \$625





LB09 Stag / Antler Handle Corkscrew  
with Sterling Mounts. Exceptional - near  
mint. \$195





LB10 1906 Stag / Antler Handle Corkscrew with Sterling Mounts and attachments. Very fancy monogrammed sterling end cap engraved with 1906 year and STERLING SILVER. Attached to one side is a brass crab and a wrench is on the other side - they appear to be original to the piece. \$275





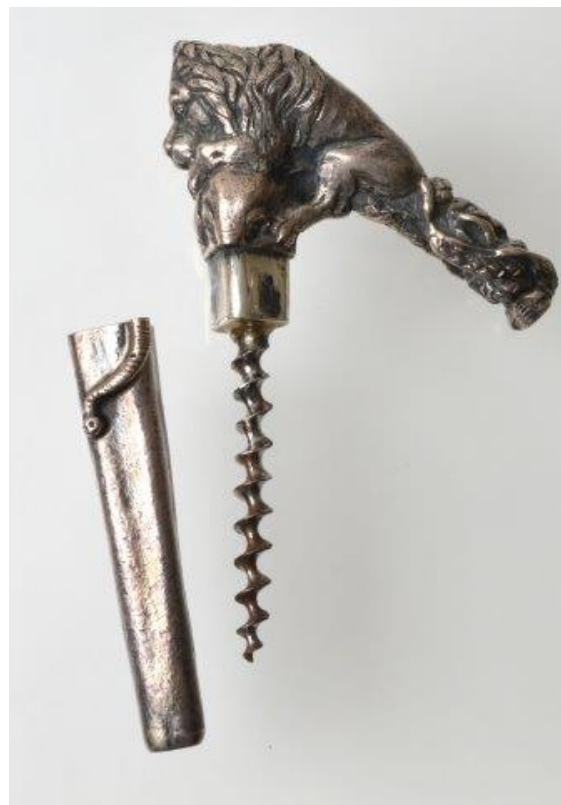
LB11 1901 dated Edward Thiéry and Charles Croselmire Patent Corkscrew. Monogrammed. Faceted fancy shank.

On January 5, 1886 Edward Thiéry and Charles Croselmire were granted U. S. Patent No. 333,697 for their "Article of jewelry and method of ornamenting the same." Designs were cut into the silver after it was electroplated to an object as on this corkscrew. \$575





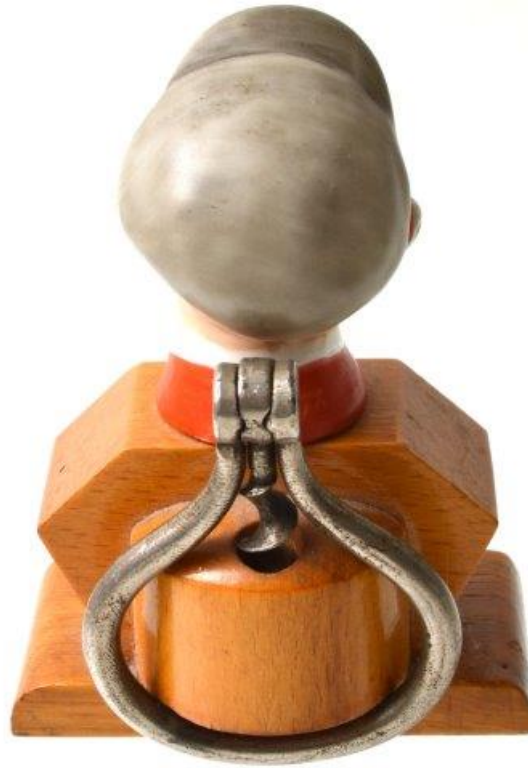
LB12 A Massive Heavy 2 pounds 7 ounces Cherubs  
Corkscrew. 8.5" long, 4" at widest point. This could  
be the centerpiece of your collection! \$6500



LB13 A fabulous Tiffany silver corkscrew featuring a lion, an elephant and a snake. Note how well-matched the sheath is matched with the elephant's trunk trailing on to it. The sheath is well-marked TIFFANY & CO MAKERS STERLING 925 – 1000. Weighs 9 oz. 5.5 inch. This is the finest figural corkscrew I have seen. Another example sold for \$11,739 online. \$7500

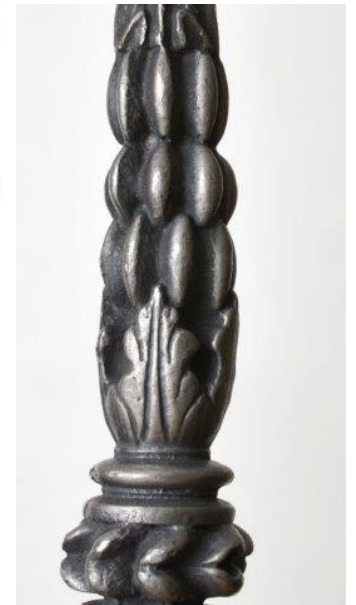
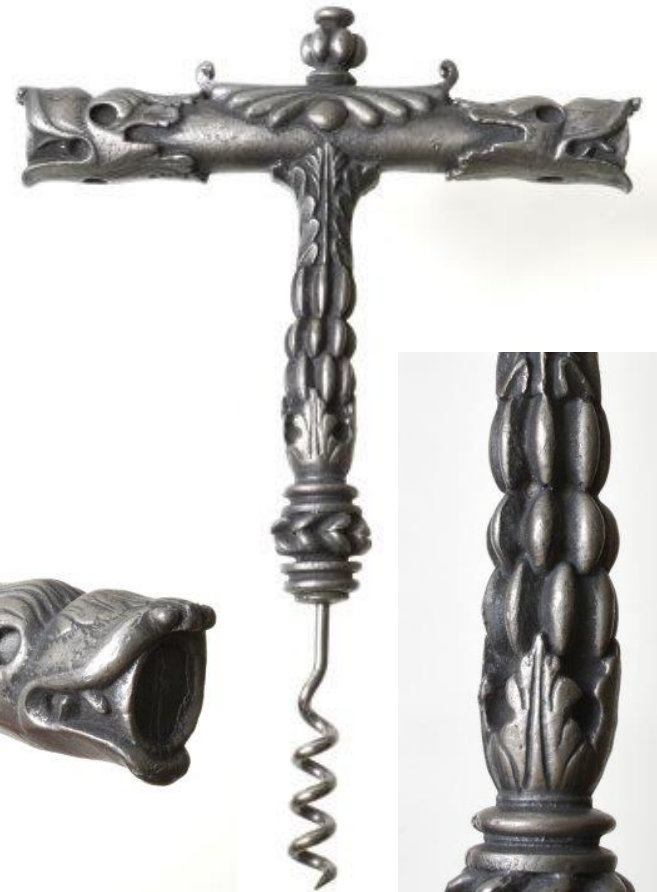






LB14 Look at all the photos. It is 4" high. The folding bow is 2" wide, and YES the carve out was made for it. The worm fits snugly in the hole and the bow folds over the hump and stays securely in place. The smoker bottle stopper bust is porcelain. The souvenir tag is for Rathen. Rathen is on the Elbe in Saxony, Germany. You will love this unusual piece. \$150





LB15 A very large (4  $\frac{3}{4}$ " x 6  $\frac{1}{2}$ " ), heavy (10 ounces) corkscrew with serpents. \$125





LB16 Stag / Antler Carved Bird Corkscrew. 5.5" long. From beak tail is 8". The glass eye on one side is missing. \$275



LB 17 Carved Deer Head Stag / Antler Corkscrew - excellent Sterling silver tail cap. 6" tall. 8.25" from nose to end tip. Marked STERLING. \$675



LB 18 Carved boar's head corkscrew - antler handle.  
Missing an eyeball on one side. 5" x 8". \$325





LB19 Fabulous Gorham Silver Boar's head on Boar's tusk. The large boar's head mount is marked GORHAM STERLING with the Gorham maker's mark. Note the carving on the tusk. \$1475







LB20 Of all the Codd bottle opener / corkscrews I have owned this one is at the top of the list. It is polished horn and a very, very elegant appearance. \$175



LB21 You need to see this superb polished horn corkscrew to really appreciate it. If you have t-handle corkscrews in your collection, this one will top them all. Beautiful. \$95



LB 22 Two pillar English corkscrew with centering bar. \$375

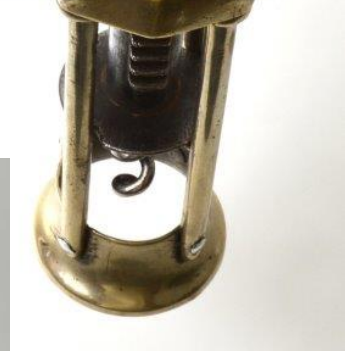


LB 23 Excellent Thomason Corkscrew - super tone on handle. The handle and barrel are in excellent condition. The operation is smooth. There is slight play in the handle. Tighten the nut. \$375





LB24 King's Corkscrew- note the close-up of the unusual badge. Handle and barrel in excellent condition. Smooth operation. \$425



LB 25 Four pillar rack and pinion corkscrew - one of the best I have seen / owned. The term "near mint" certainly applies here! \$675



LB26 Stunning boar's tusk corkscrew. Superb condition. Marked STERLING. \$125

**Sold**

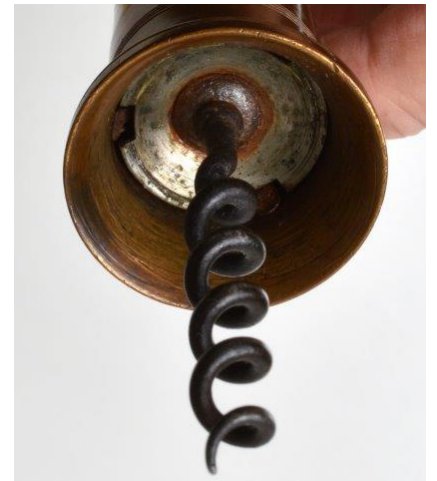
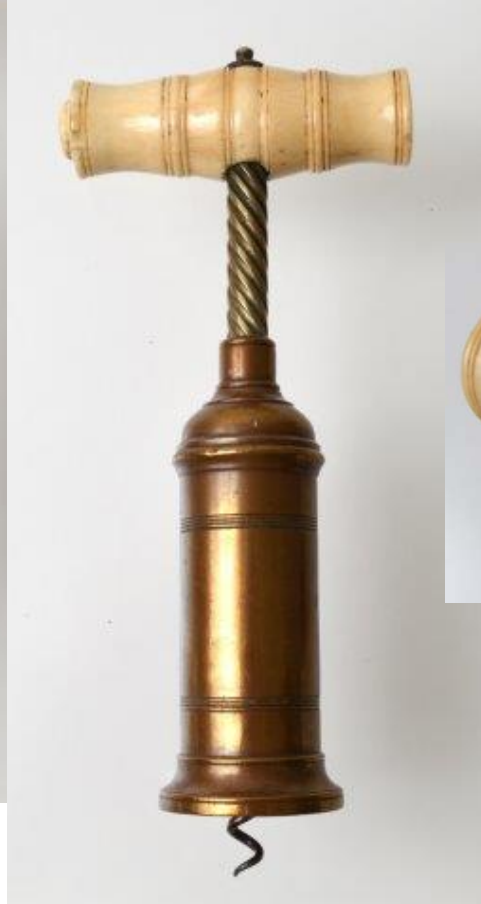




LB 27 Boar's Tusk Corkscrew with  
monogrammed silver mount marked STERLING  
118. \$175



LB28 The photos tell the story of this near perfect Corkscrew. \$145



LB29 John Mabson's British Patent No. 527 issued August 20, 1869 for his improvements for drawing corks and receiving wax and dirt from the corks. To use: Begin with the worm extended and barrel fully up. Clockwise turning inserts worm (entire piece rotates). When barrel reaches bottle - further clockwise turning causes the left hand threaded shaft to rise and pull cork. \$275





LB30 Thomason Corkscrew - dark barrel, excellent handle. \$175



LB31 Thomason Corkscrew - Removable end for easy brush replacement. Badge marked DOWLER PATENT. \$475



LB32 Henshall button corkscrew with bulbous shaft. The worm is a little twisted on the last turn. \$59





LB33 Henshall button corkscrew \$89



LB34 Very Fine Henshall button corkscrew. \$95



LB35 Henshall Button Corkscrew with replaceable brush. The threads are a little difficult to get it on and off but a rare corkscrew. \$225



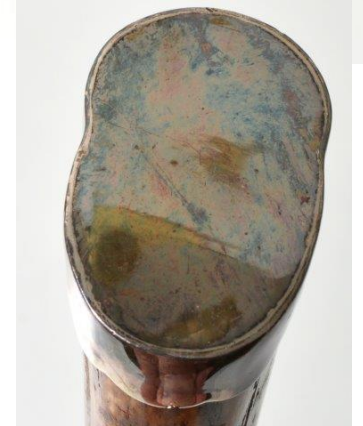


LB36 Silver-plated Viking Ship Corkscrew  
November 1957 Masonic Cruise. Marked on the  
bottom "Al Malaikah Temple (Los Angeles)  
Caribbean Cruise Nov 2 - 17 1957 Dr. Richard O.  
Bullis Potentate." \$125





LB 37 Wonderful Large Stag Handle Corkscrew with silver mounts. The handle is 7" wide. It weighs a half pound+. Fancy silver mounts. Back mount marked STERLING. Monogram on the large end. It is in near mint condition. Could be the best in your stag handle corkscrew collection. \$195



LB38 Fossilized Horn Handle Corkscrew with silver mount marked 900. 7.5" wide handle. Excellent condition. The silver mount end has not been used to hammer ice as these things often are. \$175





LB39 A large 1912 corkscrew with monogram letter P. Stag handle. Silver mount on top and bottom of end. The top one is a 1.75" wreath of Sterling surrounding the letter P. The bottom has the 1912 date and the maker's mark with STERLING 110. \$165





LB40 A 9.25" stag handle corkscrew with monogrammed silver mount. Initial JP with maker's mark and STERLING. Excellent - like a gift that was never used! \$145



LB41 Stag handle corkscrew with owl mount. \$79



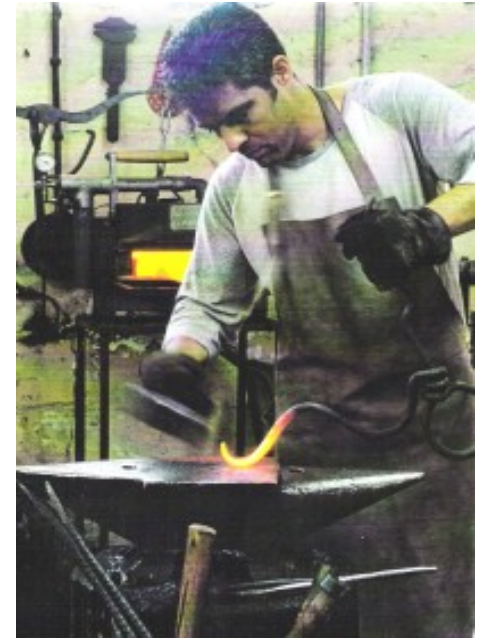


LB42 Providing entertainment is this men's choir from Germany. The conductor is a corkscrew and the singers are bottle stoppers pourers. Marked on the bottom of the stand VEB K RHONKUNST SCHNITZEREI. \$175



LB43 Corkscrew by Swiss artist Gilbert Kruft.  
7.75". WCC Page 166.

\$1750



LB44 Eran Ben Yosef produced a number of original design “art” corkscrews at Kibbutz Or Haner, Israel. These include a 13” double lever, a 10.25” lever, a 4.75” direct pull plus 4.75”, 5.5”, 7.5”, and 9.5” waiters’ friends. The unusual wood stands and leather pouches are included. These AND the corkscrews are signed by the artist. Shown on Page 159 of *World-Class Corkscrews*. \$975

Additional photos on the next page.

**Sold**







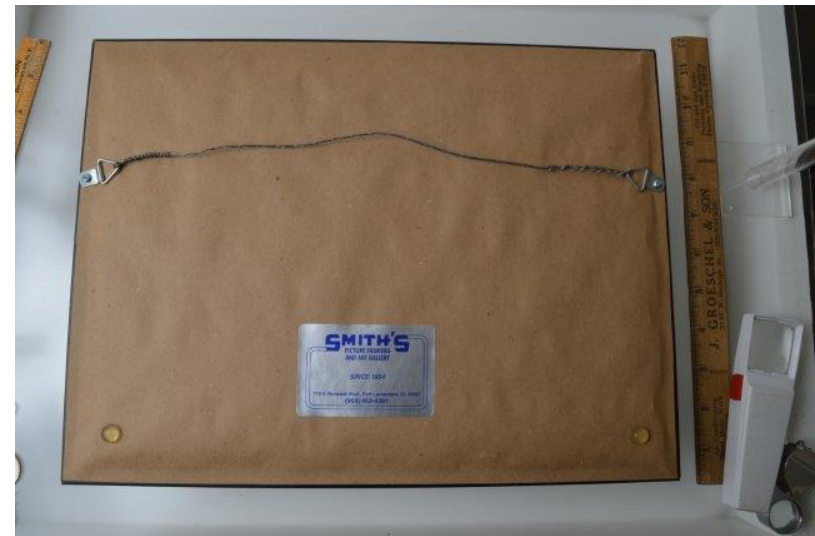
LB45 The Maxram picnic style corkscrew was made by a wealthy family in Thun (near Bern), Switzerland. The company was called Gebr. Aeschlimann AG. The two brothers ran the company. Their father, who passed away in the late 60s, invented the Maxram corkscrew. The Maxram began selling in the mid 60s. The triangular twin spiral bites into the cork and starts the cork turning. You simply “unscrew” the cork from the bottle in a continuous clockwise motion. WCC Page 323.

The counter display includes 12 Maxram corkscrews mint in original packaging. \$225



LB 46 A professionally frame 1877 Havell patent corkscrew with print block from the collection of the late Alf Erickson. 10.5" frame. \$95





LB47 A professionally framed 1883 Lowerre Patent Bottle Resealer with trade card from the collection of the late Alf Erickson. 10" x 14" frame. \$89



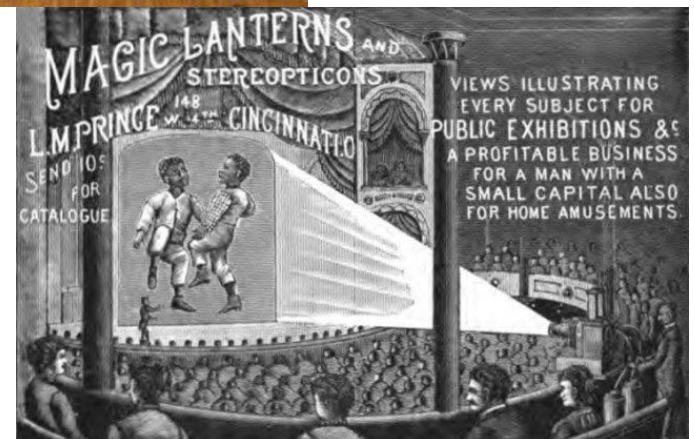


LB48 Heavy cast Syroco book ends - the Waiter - the pair weigh 3.5 pounds. \$150





LB49 Two magic lantern slides showing corkscrews. See <http://www.bullworks.net/daily/20090517.htm> for more information. \$89 for both.







LB51 A 12" diameter tray with a corkscrew design in the middle surrounded by advertising copy "Prize Medal, Glen Garry, Old Highland Whisky, Proprietors John Hopkins & Co., Glasgow & London. \$89

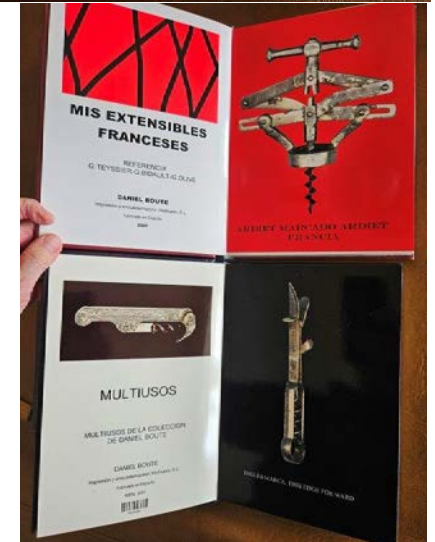
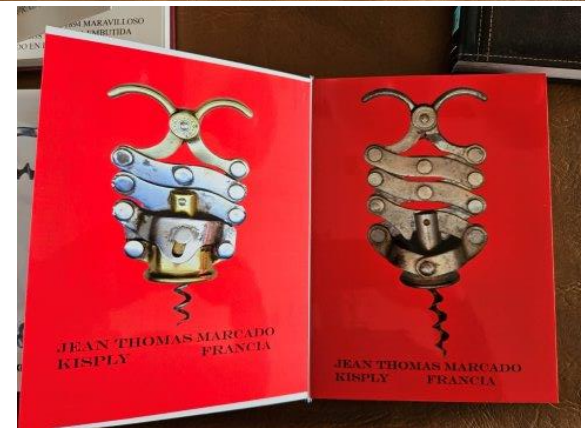




LB52 A 10" diameter Vienna art plate advertising Old Cornelius Whiskey from Pfeiffer Brothers, Louisville, Kentucky with the notice "We guarantee this to be pure old whiskey especially adapted for medicinal use." \$99







LB53 Four leather bound books by Daniel Boule 2007. Each book is 11.25" x 8" x 1.25". There are 26 heavy cardboard pages in each volume. All beautifully photographed. Great for framing your favorites. \$95





LB54 The carved wooden bear is the barrel for this double action corkscrew. See *World-Class Corkscrews* by Bull, Giulian, Paradi, page 177. \$275



LB55 The Nifty corkscrew by Vaughan printer's block.  
On the left is a mirror image of the advertisement. 5"  
x 6.5" x " thick. \$89

