

# Corkscrews for Sale 4



Don Bull, P. O. Box 596, Wirtz, VA 24184 USA  
email: [dbull@bullworks.net](mailto:dbull@bullworks.net)

(Please email with alphanumerical listing ID for availability and shipping  
– include your name and address)

Click here to return to index page: <http://www.bullworks.net/bullsale/>



PN018 Corkscrew with double sheath ??? \$8



PN022 Although the thread together OK, this may be a mismatch. The sheath is marked C & C with a faint British hallmark. \$19 **Sold**



PN025 Steel worm with worn plated brass sheath.\$29



PN026 Thread a little rough in one spot. \$29



PN029 Brass corkscrew. \$39



PN033 Brass top. Steel sheath. Delicate worm. \$25



**PN045 Marked MADE IN ENGLAND. Shown in the World-Class  
Corkscrews book. \$25**



PN046 Friction fit sheath. Plating wear. \$15



**PN047 Provisional Patent Corkscrew marked  
as shown. \$39**



PN096 Tau Delta Greek letters on the bottom. \$19



PN097 ROWOCO Corkscrew on original card. ©1982. \$19



PN105 Elegant modern design corkscrew and cap lifter with a snap fit sheath. \$25



PN109 Picnic corkscrew from Marwood & Co., Crown Corks & Corks. \$75



**PN121 Picnic Corkscrew. Mottled olive drab sheath. \$7**



**PN129 Picnic corkscrew from the Belgian company “Compagnie Maritime Belge.” \$25**



**XX069 Picnic corkscrew marked HENRY BOKER GERMANY. \$35**



XX070 Picnic corkscrew. \$12



VA144 Combination corkscrew and cap lifter advertising “George Younger’s Alloa Sparkling Ale.” \$29



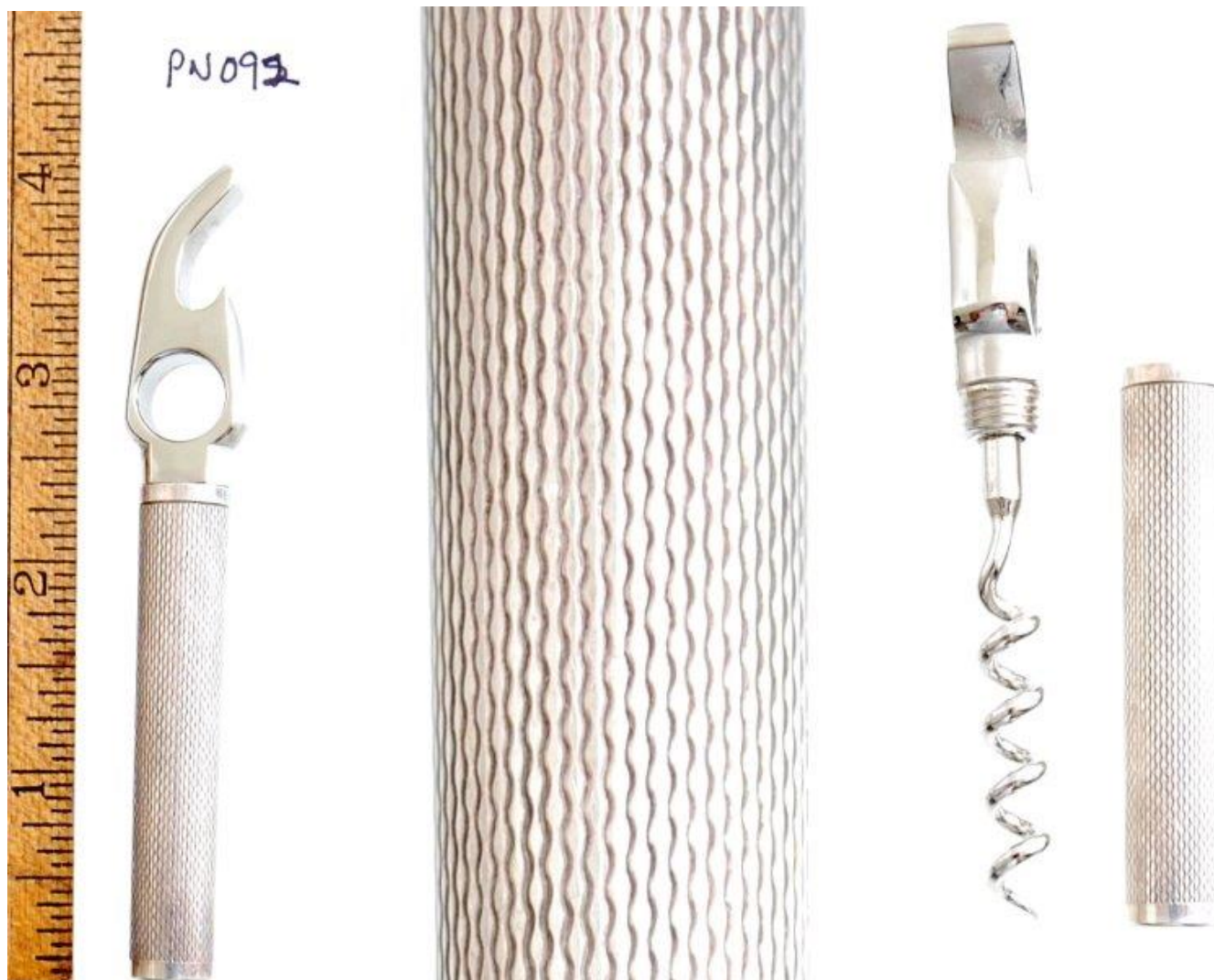
KSM081 1870s Brass decorative picnic. See Ellis page 34 for Coney design. Also see Peters – Giulian page 73. \$75



KSM149 Picnic advertising Missouri Pacific Lines. \$5



PN091 Marked GES GESCH for GESETZLICH GESCHÜTZ (protected by law). Pfeilring trademark. \$16



PN092 Not marked. Nice case. \$29



**PN094 Marked GES GESCH for GESETZLICH GESCHÜTZ (protected by law). Pfeilring trademark. \$29**



PN087 Marked GES GESCH for GESETZLICH GESCHÜTZ (protected by law). Decorative case. \$29



PN104 Picnic corkscrew / cap lifter advertising Missouri Pacific Lines. \$15



PN100 Corkscrew in jeweler's box. \$39



XX091 Picnic corkscrew with silver-plated sheath. \$12



XX093 Picnic corkscrew with silver-plated sheath. \$12



**RD130 Large (4") roundlet Marked BTE S.G.D.G. MADE IN FRANCE. French Patent No. 1,104,068 granted June 8, 1955 to André Verpillat. \$49**



**RD18 Maker's mark plus STERLING B2061 AND OTHER METALS**  
(referring to the core, the mechanism, and the worm). \$75



RD24 Simple design. Marked STERLING. \$75



RD95 Combination corkscrew and cap lifter. Lined with space for engraving monogram/message. \$75



RD42 Machined pattern on nickel plate. Not marked. \$75



RD137 Roundlet from the Bartholomay Brewing Company, Rochester, New York. \$75



RD124 A surprisingly nice roundlet . The blue material is a hard, a couple of millimeters thick and mounting on the case. Image of a sailboat (bateau à voile) and “La Liberte.” \$69



RD93 Not marked. \$10



**RD272 Roundlet Short Worm \$1**



RD57 Monogrammed J. B. R. Marked STERLING 10 with the mark of Webster Company, North Attleboro, Massachusetts (1869-1950).  
Gold wash on worm. \$95



KSM146 Roundlet. \$45



**KTTO76** In this design the sheath serves as the handle when the mating parts are screwed together. Marked A2-70. \$35