

Corkscrews for Sale 3



Don Bull, P. O. Box 596, Wirtz, VA 24184 USA
email: dbull@bullworks.net

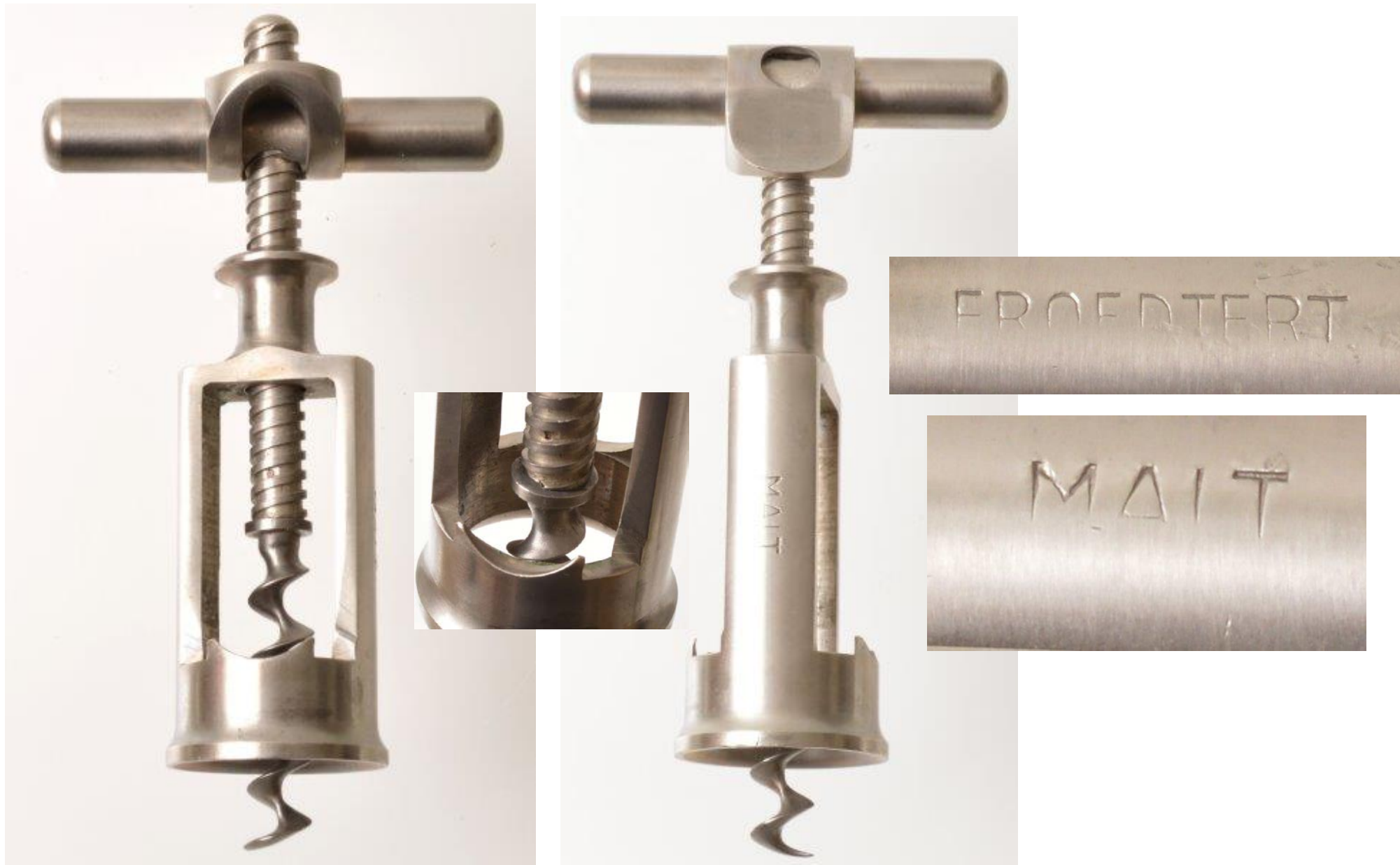
(Please email with alphanumerical listing ID for availability and shipping
– include your name and address)

Click here to return to index page: <http://www.bullworks.net/bullsale/>



Sold

KME097 French triple flynut corkscrew marked J. PERILLE B^{TE}
S.G.D.G. PARIS PIZZ on one side of the handle and HELICE J P B^{TE}
S.G.D.G. on the other. \$12



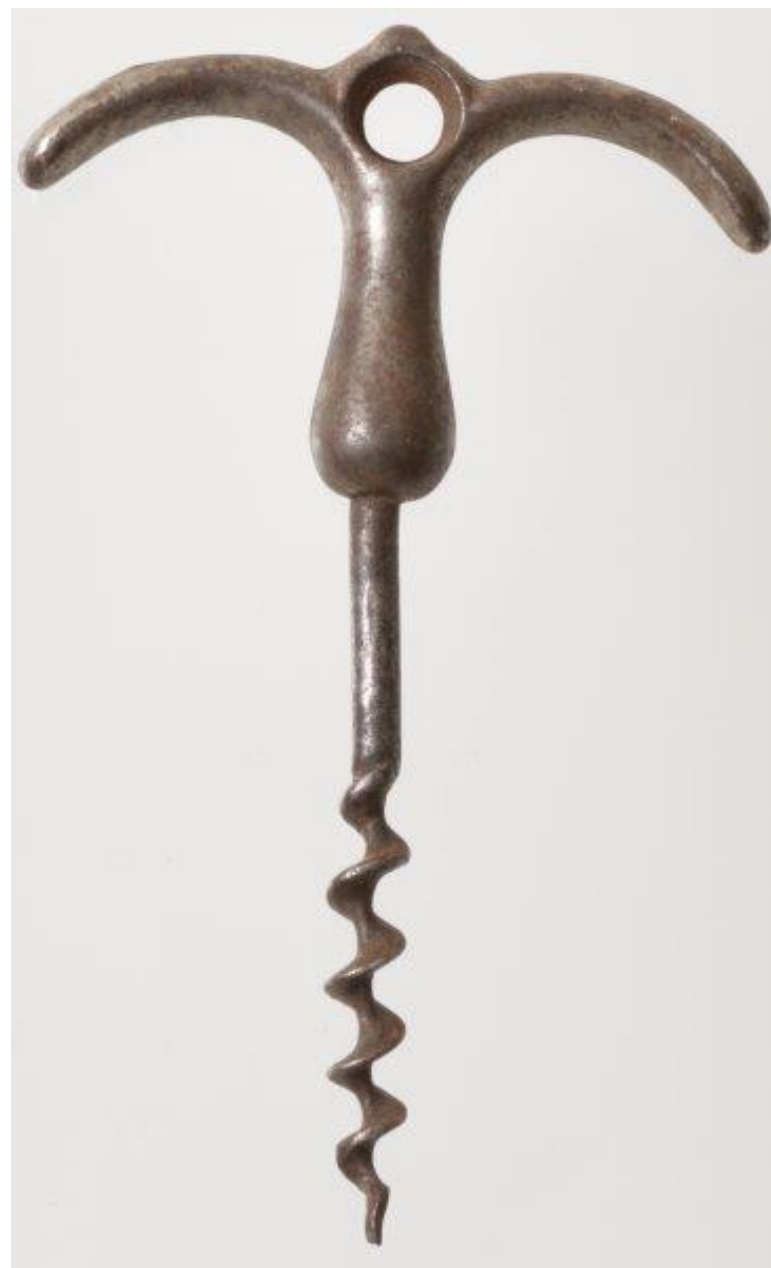
KME090 A substantial open frame corkscrew with rollover locking collar advertising “Froedtert Malt” (Wisconsin) on the sides of the frame. Cap lifter in frame. \$29



VA182 Lifetimer corkscrew with rolover locking handle. \$5



AQ47 “Flash” style Williamson corkscrew / cap lifter with ribbed sheath. \$15



KMD014 Midsized corkscrew. \$19



KL37 Eyebrow handle all steel corkscrew. \$9



KLES003 l'espirit et le vin corkscrew.
Marked on bottom. \$19

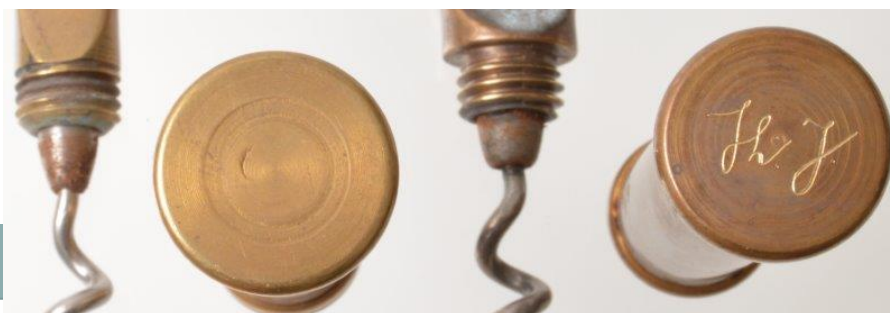
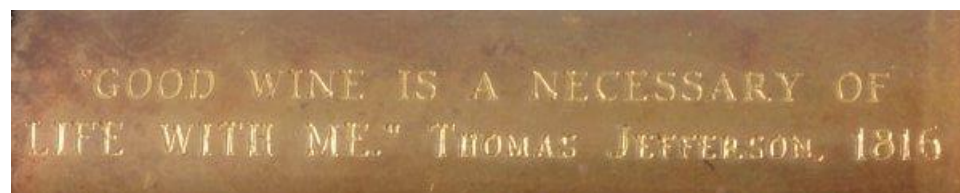


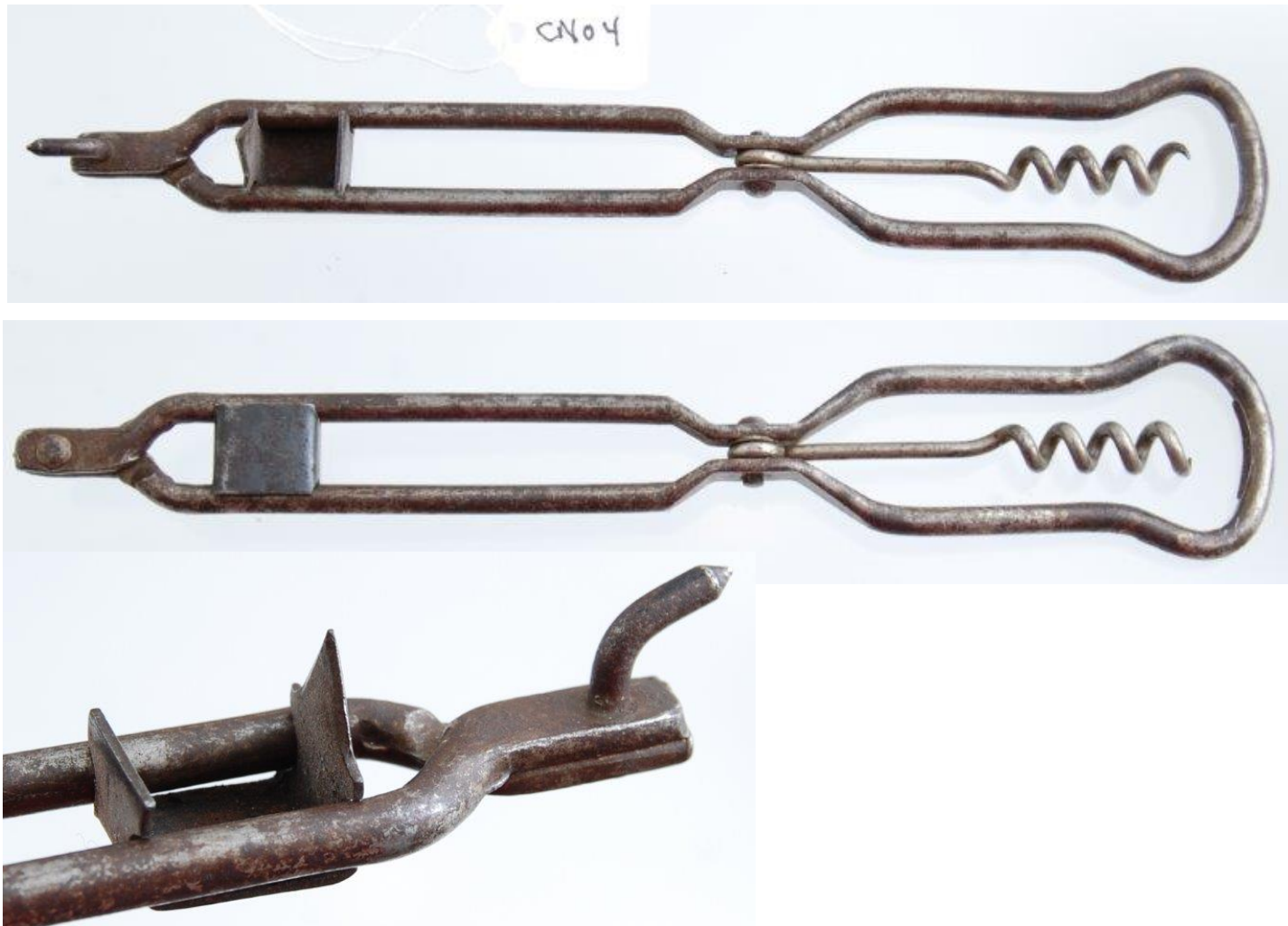


KLES004 l'esprit et le vin corkscrew. One end pulls out to reveal a wine thermometer. Marked on end of handle. \$25



KAM031 Two corkscrews. One unmarked inspiration for the Thomas Jefferson corkscrew (right in photos) given to ICCA members at the 2008 annual meeting in Williamsburg, Virginia. \$89 for both





CN04 8" heavy gauge wire open body with end spike and sliding blade can opener plus slot on the inside of the top of handle to act as a cap lifter with wire helix. \$25



KAM036 Erik. H. Nylin's U. S. Patent No. 914,601 granted March 8 1909 for a "Combination-Tool." It has a pipe wrench, tack hammer, knife sharpener, nutcracker, several wrench holes, can opener, screwdriver, wire cutter, and wire corkscrew. Marked PAT 09. \$39

Sold



KAM041 S. G. Monce U. S. Patent No. 91,150 of June 8, 1869. \$19



KAM044 Benjamin F. Adams' U. S. Patent No. 229,228 of June 29, 1880. \$25



KAM051 Frank R. Woodward U. S. Patent No. 166,954 of August 24, 1875. Marked NASHUA LOCK CO. \$35



KAM053 Benjamin F. Adams' U. S. Patent No. 229,228 of June 29, 1880. Pitted \$12



KAM054 Frank R. Woodward U. S. Patent No. 166,954 of August 24, 1875. \$19



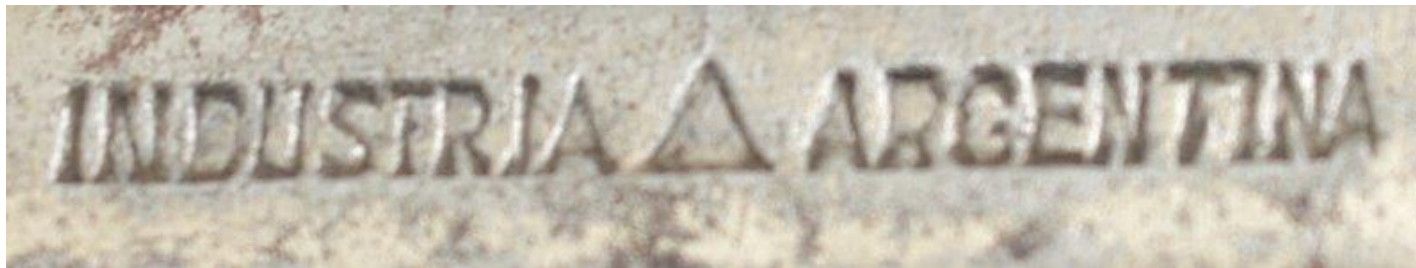
AR02 Wood handle corkscrew advertising “Use Camello Detergente / Camelo El Detergente Honesto.” Marked INDUSTRIA ARGENTINA. \$29

Note: Advertisement not included – for illustration purposes only



AR06 Nickel plated brass corkscrew with sheath. The bottom of the sheath is marked CLUB PRIVADO VINO FINO. Heavy-robust corkscrew. \$45

Sold



AR07 Combination corkscrew and bottle cap lifter marked INDUSTRIA ARGENTINA. \$12



AR16 Combination tool with P-38 type can opener. Marked as shown. \$15



AR17 Bottle opener and can opener marked as shown. \$7



AR18 Plated brass (worn) open frame corkscrew. Argentina. \$7



NH98 Single wire formed into a button. \$5



VA19 A heavy brass corkscrew / opener marked WINTHROP with a cross symbol on the sheath. \$22



VA29 On August 20, 1850 Seraphin Bossin was granted French Patent No. 10,004 for his cork removing machine. The corkscrew was secured in the machine to pull a Champagne cork. \$19



VA36 A screw with button that probably held a replacement cork. \$12



VA54 Will the crystal ball focal point of this corkscrew predict the quality of the wine being opened? \$12



VA58 One piece iron corkscrew. \$19



VA67 Midsize corkscrew with a fat heavy handle. \$8



VA194 Thistle. \$8



UN02 Moon corkscrew. Bent worm. \$19



UN15 Chairing a meeting? Gavel from Henri Maire. Concealed corkscrew. Wine barrel shape head. \$18



UN78 At first glance this looks like it should have a can opener. It is a waiter's friend corkscrew marked D.B.G.M. and MADE IN GERMANY. \$9



UN93 An elegant corkscrew in a fitted wood block labeled CARDIAC. \$22



Note: Shipped without gas cartridge



UN95 Mister Maximum. Austrian Gero Artmer tinkered with the idea of using the gas advantage externally in a corkscrew design. His device would allow him to turn the worm into the cork, push a button, and the cork would be automatically extracted. Artmer submitted his patent application to the Austrian Patent Office on October 22, 1971. Patent Number 305,071 was issued May 15, 1972 and officially announced February 12, 1973. Marked WORLD PATENT DESIGN GERO ARTMER and DUPONT'S DELRIN. \$25



Note: Shipped without gas cartridge



UN96 Mister Maximum. Austrian Gero Artmer tinkered with the idea of using the gas advantage externally in a corkscrew design. His device would allow him to turn the worm into the cork, push a button, and the cork would be automatically extracted. Artmer submitted his patent application to the Austrian Patent Office on October 22, 1971. Patent Number 305,071 was issued May 15, 1972 and officially announced February 12, 1973. Marked WORLD PATENT DESIGN GERO ARTMER and DUPONT'S DELRIN. \$25



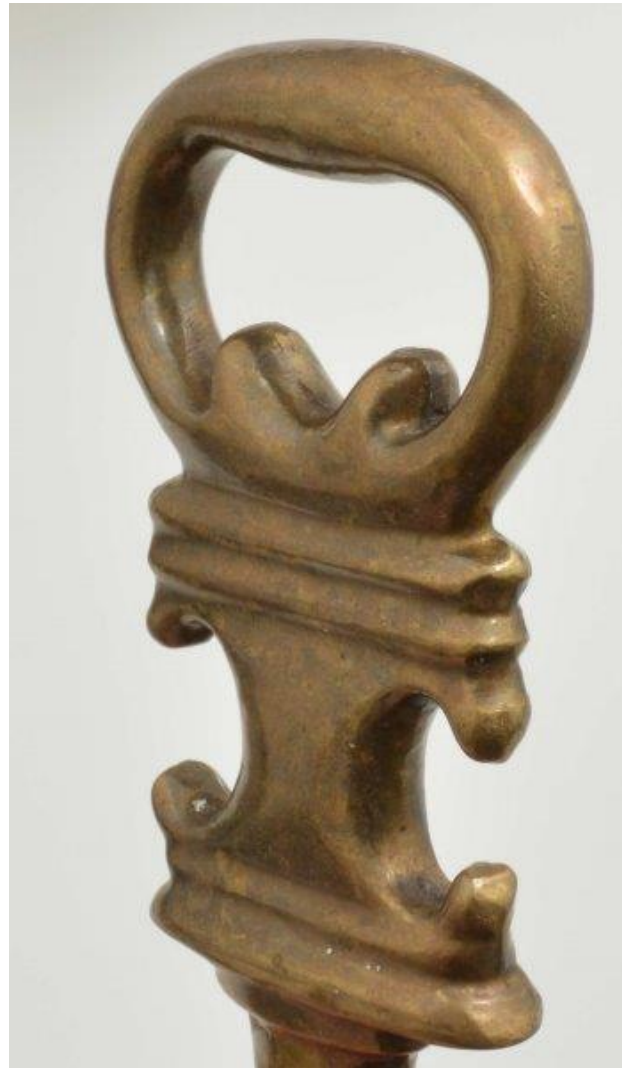
WM03 Cast Aluminum wall mounted cap lifter and corkscrew. Marked PHILA. PA PAT PENDING R.S. PRODUCTS CO. \$12



WM19 Cast aluminum cap lifter / corkscrew marked S8582 26 on the back. \$15



EE23 Silver-plated Scandinavian design corkscrew. Marked as shown. \$75



EE41 6.25" long corkscrew. 8 ounces. \$15



EE44 Brass handle corkscrew. \$12



IC06 Heavy torpedo brass corkscrew. \$19



KL47 Corkscrew with full four finger grip. \$19