

# Corkscrews for Sale Can Openers



Don Bull, P. O. Box 596, Wirtz, VA 24184 USA  
email: [dbull@bullworks.net](mailto:dbull@bullworks.net)

(Please email with alphanumerical listing ID for availability and shipping  
– include your name and address)

Click here to return to index page: <http://www.bullworks.net/bullsale/>

A Frenchman, Philippe de Girard invented the steel (tin) can in England 1810 and a couple of years later it was used to pack food so that the meal would be ready any time and would not spoil. So what would be a better marriage of devices than the corkscrew and the can opener? Subsequently, thousands of patents were issued all over the world for ingenious devices that opened cans and very often a corkscrew was added – you need to drink with your meal!

How many times have you corkscrew hunted through a box of kitchen utensils only to be poked with the end of a seemingly ordinary tin can opener? As the blood flows, you shun it and dig deeper, still hoping. Or maybe you seize the opportunity to expand your corkscrew collection with that “ordinary” tin can opener. Hopefully, when you are done looking at the “can openers” in this sale, you will understand that there are some worthy “keepers.”



**CN151 Albert Henry Saunders and Howard Oscar Collins combination can opener, bottle opener, bottle stopper and corkscrew. English registration # 707111 dated July 22, 1924. \$75**



**CN56 Combination tool marked MFD BY INDESTRO MFG CO  
CHICAGO U.S.A. \$6**



CN58 Vaughan's All in One marked as shown. \$3

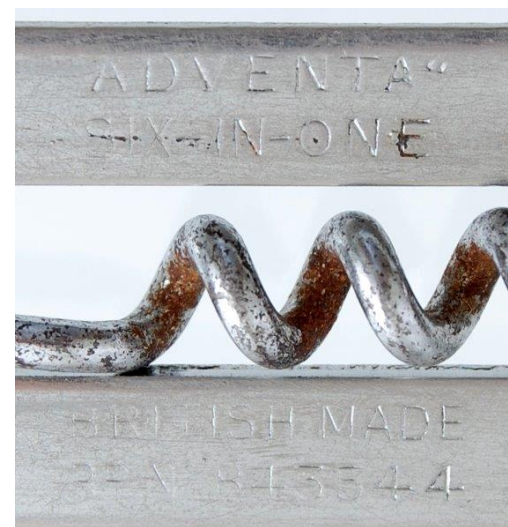
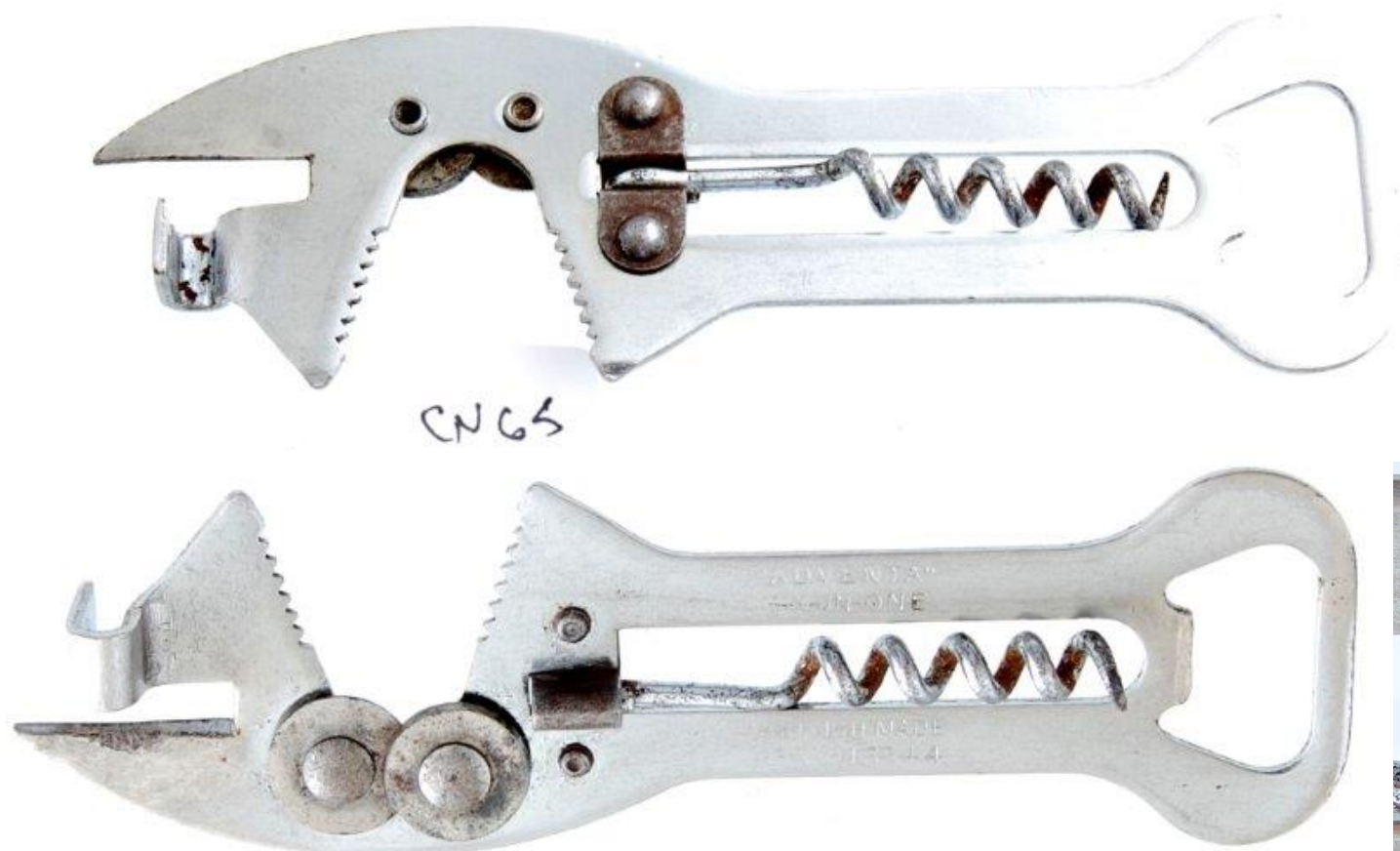




CN61 Combination tool from A & J. Marked as shown. \$5



**CN64 Combination tool marked KING PAT MAY 17-92 & June 11-95 with the image of a crown. U. S. Patent Numbers 475,222 and 541,034 issued to William G. Browne. \$12**



**CN65 Multi-tool marked ADVENTA All-IN-ONE and BRITISH MADE RD NO 843544. Edward Bellow's British Design Registration of May 11, 1945. \$39**





CN66 Improved Peerless multi-tool. Made in AUSTRIA. \$9

Note: See next page for enclosed instruction sheet

# IMPROVED PEERLESS

UNIQUE  
SIMPLE  
AND  
EFFECTIVE  
IN USE

## HOUSEHOLD TOOL

This tool is an important improvement  
on all those hitherto brought up.  
All operations are done in the easiest and  
quickest way.

AMERICAN  
AND  
FOREIGN  
PATENTS  
APPLIED

A glance at the illustrations will sufficiently  
show how to use the tool in the different cases

By buying this tool you possess a really  
perfect and up-to-date

**knife & scissors sharpener**

a  
**sharpener for all edged tools**

a safe and quick

**can - opener**

a reliable

**glass - cutter**

a

**bottle - opener**

The working parts are made of a highly  
**magnetized steel**  
hardened by a special process of our own  
and therefore the tool may be subjected  
to the hardest usage.

By tightening the screws the position of  
the grinding wheels can be changed.

This arrangement affords an  
**unlimited durability**

even to this most used parts of the  
tool.

This excellent tool can therefore make  
many important works in the household  
and is so thoroughly constructed that even  
a child may easily handle it.

### Directions.

**TO SHARPEN:** Hold the tool in right hand at about a 45°  
angle, and draw along the edge of the blade down  
and up a few times. Careful to keep the blade steady  
throughout the whole motion, finishing up with a  
few dry strokes.

**TO SHARPEN AND STONE OF THE SAME CHARACTER:**  
Hold the tool by holding the flat side of the blade in the  
right hand, and draw it down the stone, while the left  
hand holds the handle down. Repeat the operation  
several times, until it is sharp.

**TO SHARPEN:** The point is sharpened by drawing the  
blade down the stone, and up the stone, and then  
down the stone again.

**TO SHARPEN:** The point is sharpened by drawing the  
blade down the stone, and up the stone, and then  
down the stone again.

**TO SHARPEN:** The point is sharpened by drawing the  
blade down the stone, and up the stone, and then  
down the stone again.

**TO SHARPEN:** The point is sharpened by drawing the  
blade down the stone, and up the stone, and then  
down the stone again.

WARRANTED BY HERESS TOOL Co. 543 Broadway NEW YORK N. Y.



CN69 Unused combination tool in original package. \$7





**CN71 Can opener marked RIVERSIDE MFG. CORP. PAT. PEND.  
\$6**





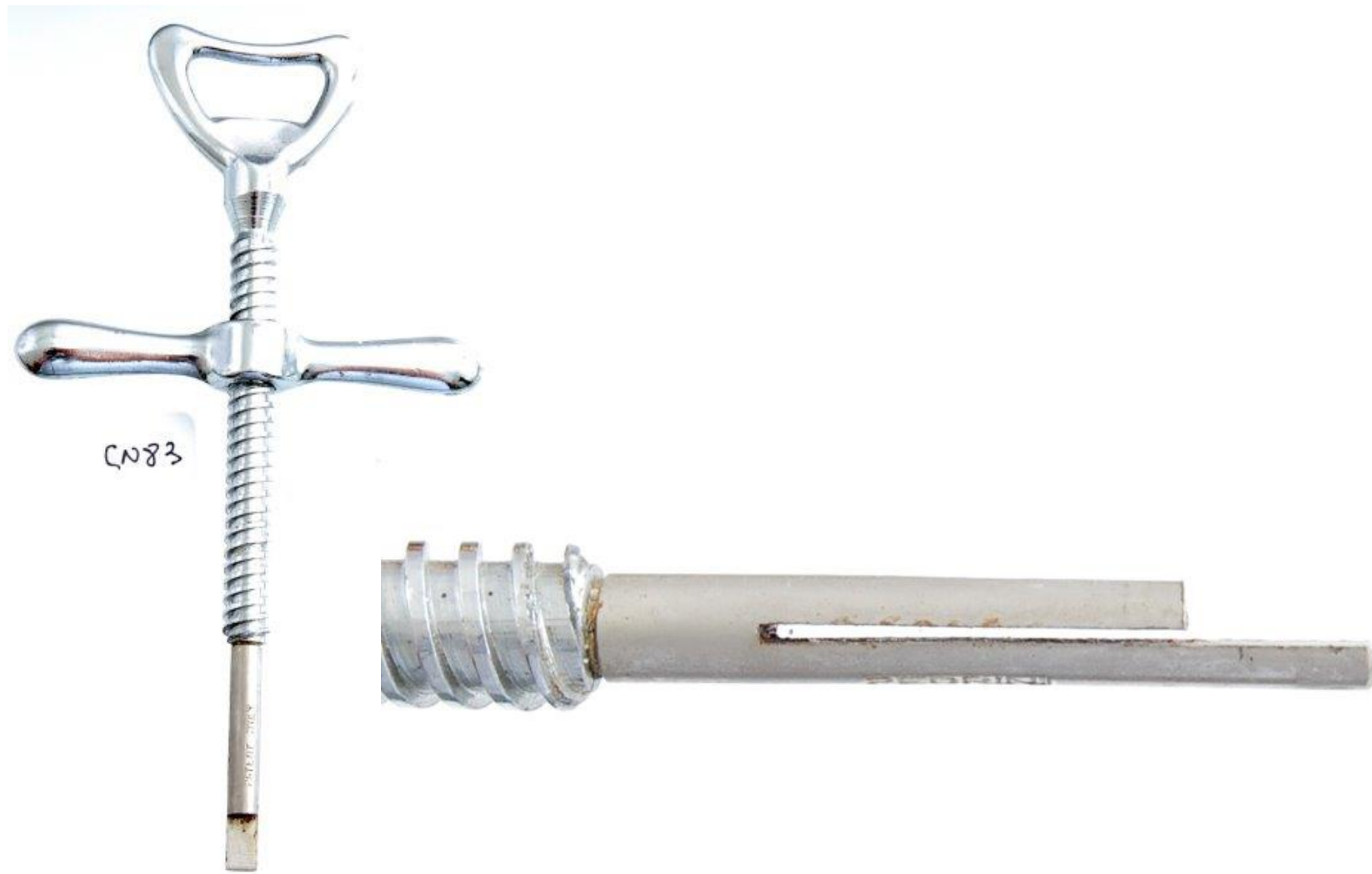
**CN75 Can opener marked SESAM on stippled finish. \$4**



CN77 Can opener marked SESAM on smooth finish. \$4



**CN82 Can and bottle opener marked ABS ROSTFREI DDR. \$3**

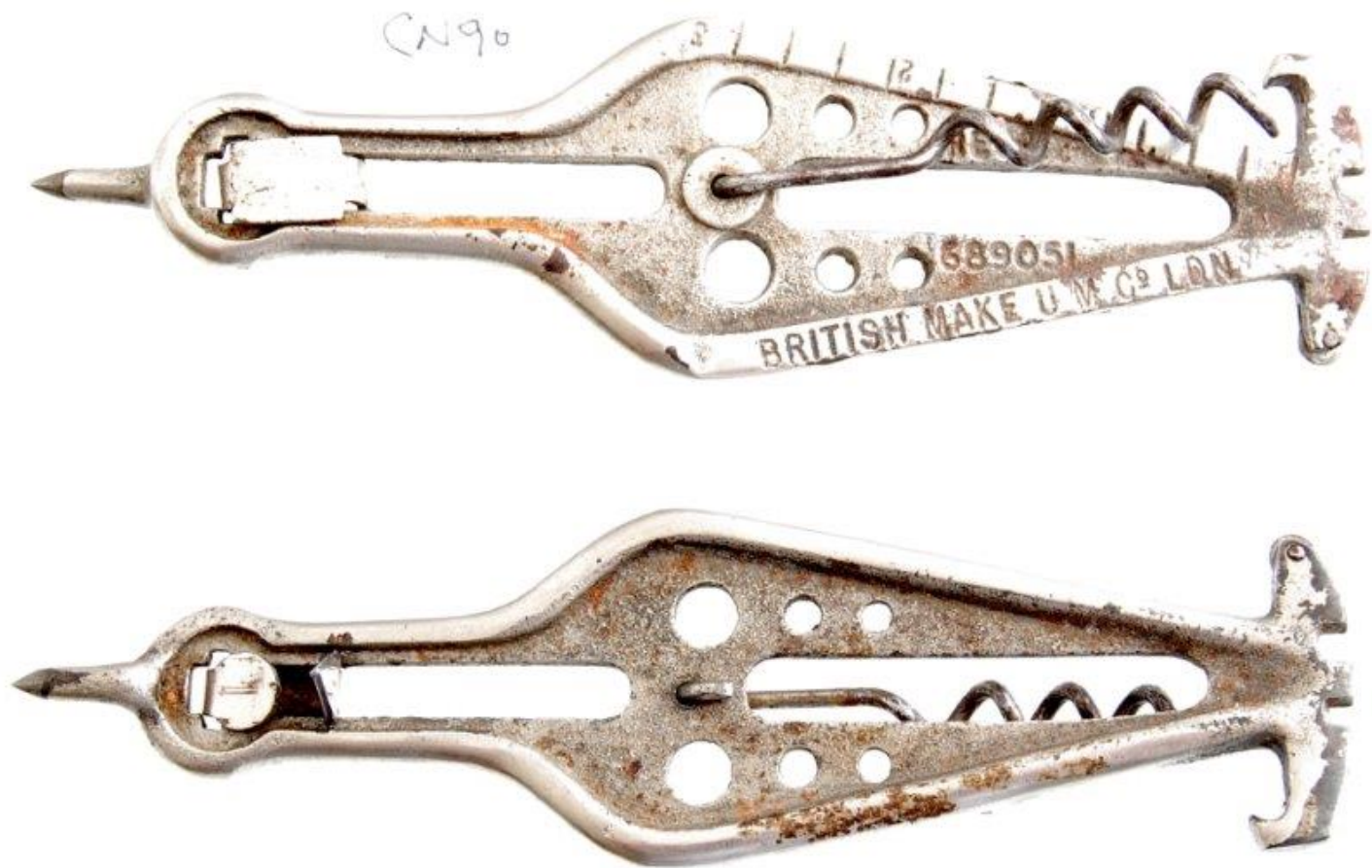


**CN83 Sardine Can Opener. \$3**





**CN85 Combination tool marked MADE BY HENRY SQUIRE AND SONS LTD. WILLENHALL, STAFFS. ENGLAND on one side and BUCKLE PROOF BLUE BLADE on the other. \$15**



CN90 The Utility. British Design Registration No. 689,051, and U. S. Patent No. 724,096 (March 31, 1903). \$25



**CN92 Two similar Vaughan combination tools. One is marked HAND GUARD and other THUMB GUARD. \$10/both**



CN96 Ekco - A & J combination tool. \$3

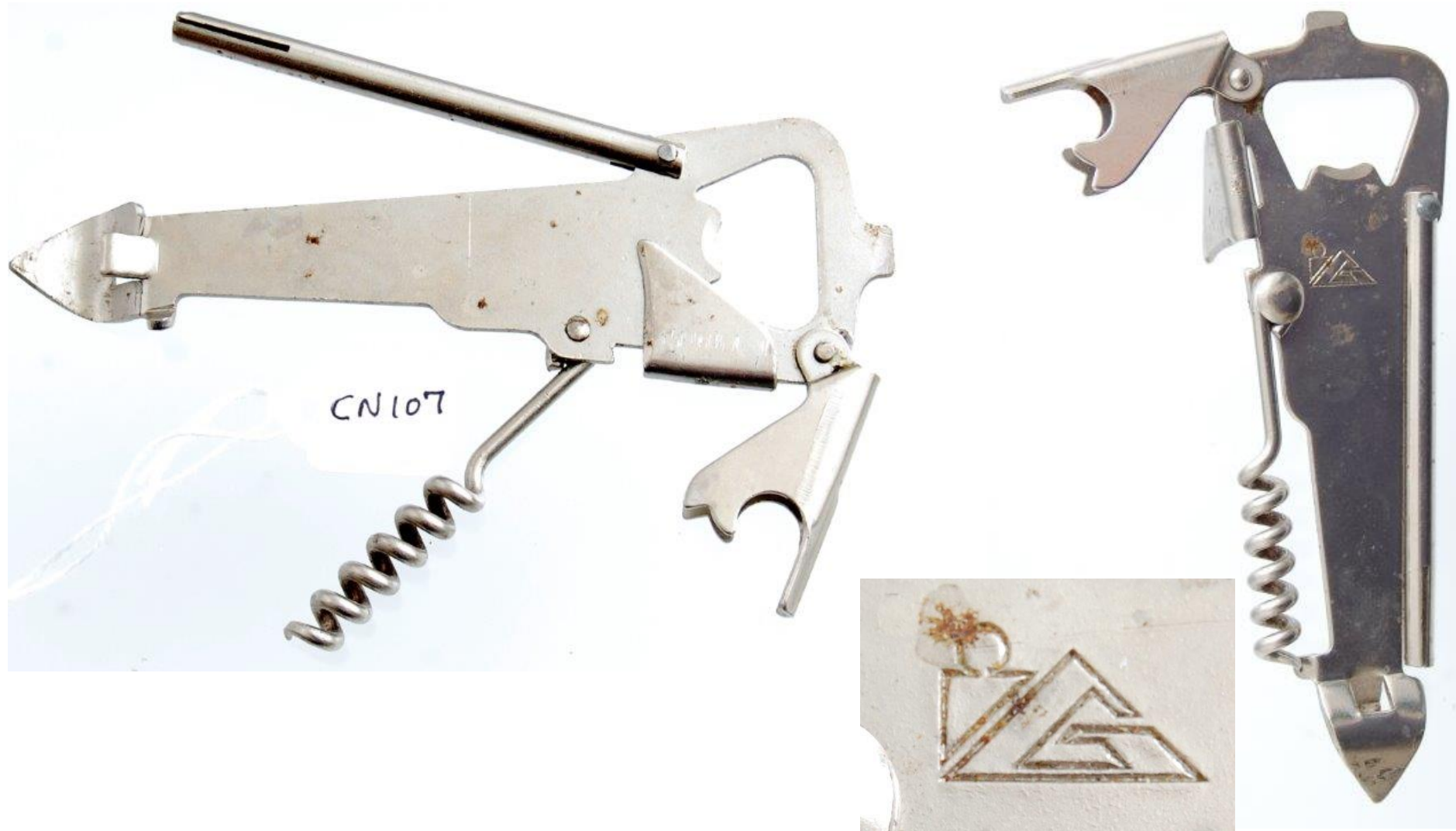




CN98 A & J combination tool. \$4



CN99 A & J combination tool. Faint marking. \$1



**CN107 Combination Tool marked as shown in photos. \$15**



CN109 Combination Tool marked as shown in photos. \$15





CN111 Beck's Bier Combination Tool marked as shown in photos. \$15



CN123 LE TRUC Martinaud's 1919 French patent combination waiter's friend and sardine can opener. \$65



**CN124 Combination Tool marked as shown in photos. \$15**



**CN127 Spanish Patent multi-tool without corkscrew but with swivel blade can opener, sardine can key and cap lifter. Marked PATENTE NO. 27116 BOJ on the can opener tool. \$12**

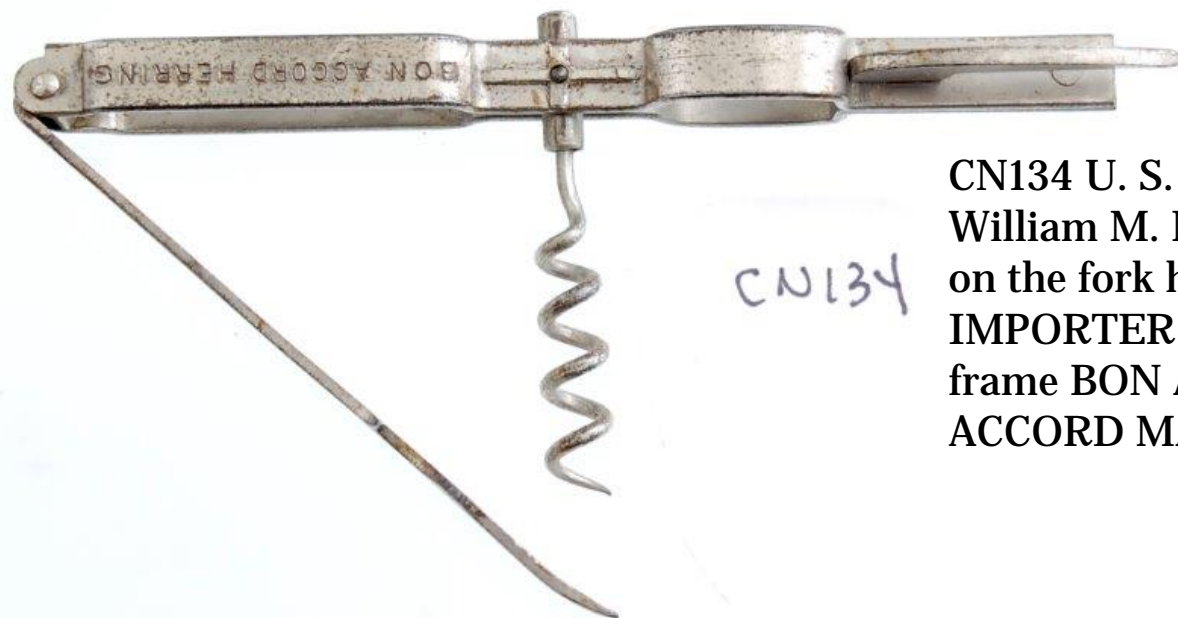




**CN128 French combination tool like the Spanish BOJ. \$15**



**CN130 French combination tool marked as shown. \$15**



CN134

CN134 U. S. patent 1,258,035 awarded to William M. Moore on March 5, 1918. Marked on the fork handle B. M. SHIPMAN IMPORTER NEW YRO. Marked on the frame BON ACCORD HERRING and BON ACCORD MACKEREL.. \$75





CN135 U. S. patent 1,258,035 awarded to William M. Moore on March 5, 1918. Marked on the fork handle CHR. BJELLAND & CO. STAVANGER NORWAY. Marked on the frame BJELLAND'S CANNED GOODS and KING OSCAR SARDINES. Fork broken. \$15





CN136 SILA combination tool in pouch with instructions. \$12



CN137 Sardine key. \$9



CN138 Sardine key. \$10



CN139 Sardine key. \$10





CN140 Sardine fork and bottle opener. \$29



CN141 Combination tool. \$15



CN142 Combination tool. \$12



CN143 Combination tool. \$25

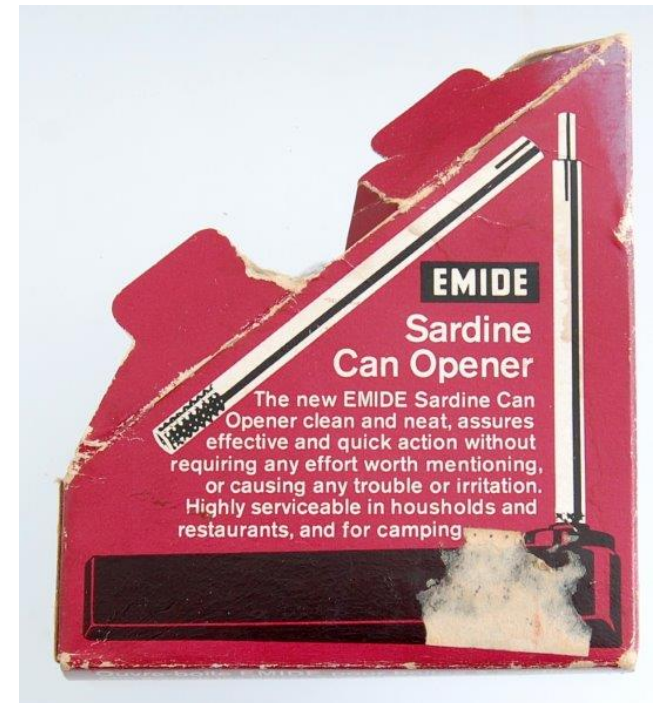




CN144 Combination tool. \$12



CN144X Combination tool. \$12



CN145 Combination tool. \$12





CN146 Combination tool. \$9





CN147 Combination tool. \$9



**CN148 Sardine key marked PATHOS-PRIMA D.R. PATENT. 9" long.  
\$25**



CN149 Sardine key with advertising as shown. \$25



**CN155 Folding combination tool marked D.B.G.M. GERMANY.  
“Enschede” badge attached. \$19**





CN160 Combination tool. \$19



CN161 Combination tool. \$19



CN163 Sardine can opener. \$7



**CN166 Combination tool. \$8**





CN168 Combination tool. \$8



**CN169 Combination tool. \$8**