

Bull Collection Sale 9

Don Bull, P. O. Box 596, Wirtz, VA 24184 USA
email: dbull@bullworks.net

(Please email with alphanumerical listing ID for availability and shipping – include your name and address)

Click here to return to index page:
<http://bullworks.net/bullsale/>

Note: All measurements of tusk, bone & horn corkscrew are in a direct line from one point to the other and not along the bend.



SB03 Stag handle corkscrew. Turned shank. Fluted Helix. Nice. 4" x 6". \$49



SB04 Stag handle with silver mounts marked STERLING. Gorham mark with M (1880). 5.25" x 5.5" \$145

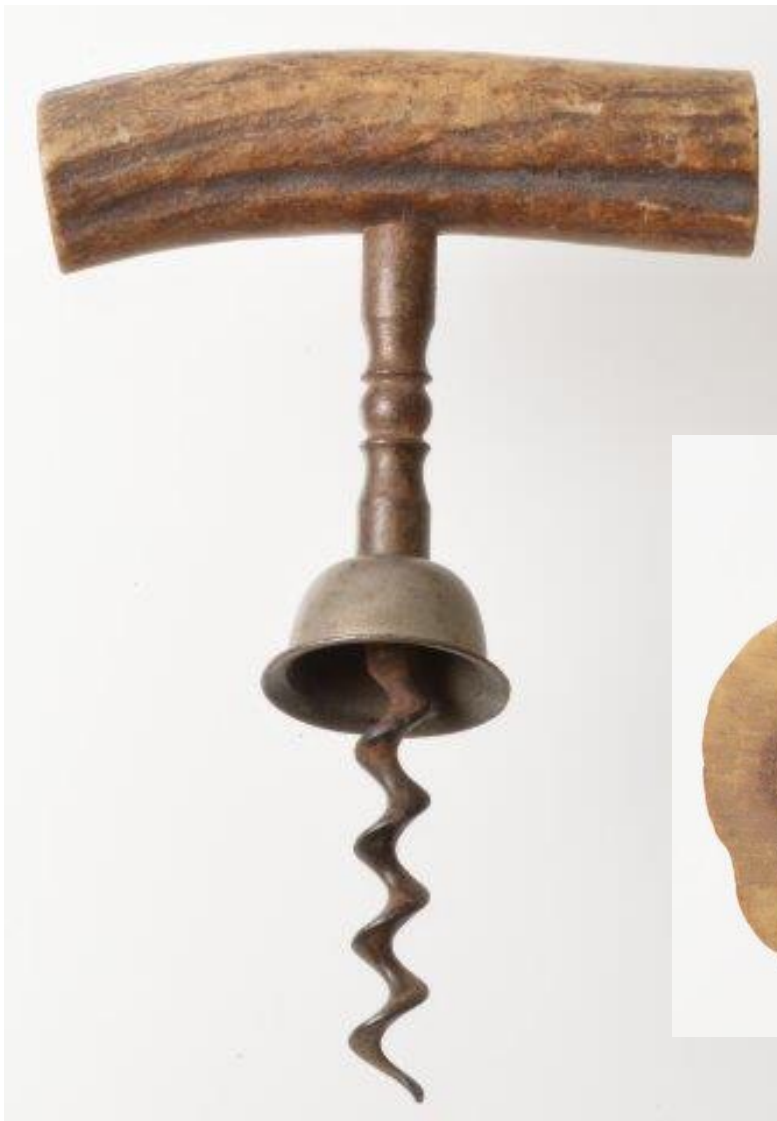


SB05 1897 Williamson patent
corkscrew with wire cutter and cap
lifter. Stag handle. Nice shaft. 4.5" x
6.75". \$65



SB06 Antler with monogrammed
silver plate on the end and silver on
top. 6.5' x 5.5". \$75





SB08 Stag handle corkscrew with floating bell. 3.5" x 5.25". \$59



SB10 Stag handle bottle opener and loop seal remover. Marked PAT. 1906 (Hasselbring) and STERLING 50. Monogrammed. 6.25" \$35



SB11 Stag handle corkscrew with unusual long bell. Worm is short. 8.75" x 4". \$19





SB13 Silver plated stag handle corkscrew. Diamond faceted shank. A pretty and unusual corkscrew. 4.5" x 5.75". \$375

SB14 Large stag handle
corkscrew. 1897 Williamson
patent corkscrew with wire
cutter and cap lifter. 8" x
6.25" \$65





SB15 Stag handle corkscrew. 6.75" x 5.75". \$45



SB16 Stag handle corkscrew with silver mount marked STERLING GORHAM. This is a souvenir of the 25th annual banquet of Masonic lodge 271 on February 21, 1912. 6.5" x 5.25". \$295





SB17 Top quality stag handle corkcorkscrew. 1897 Williamson patent corkcorkscrew with wire cutter and cap lifter. Marked WILLIAMSON'S. 4.5" x 6.25". \$55



SB18. Antler handle corkscrew. 1900 Edwin Walker US patent for the self-pulling bell with cap lifter and prong. \$45



SB19 Corkscrew, bottle opener, and loop seal remover with stag sheath. \$35



SB20 Stag handle corkscrew with silver plate on the end marked STERLING. 5.5" x 5.5". 1900 Edwin Walker US patent for the self-pulling bell with cap lifter and prong. \$49



SB21 Stag handle corkscrew with silver mounts marked STERLING. Theodor Fischer's 1902 German Registered Design. 6.5" x 7.5". \$175





SB23 Stag handle corkscrew.
8.25" x 6.75". \$45



SB29 Henshall type corkscrew. Rich looking handle. Well-turned shank.. Serrated button. Perfect helix. Excellent. 4" x 6". \$175



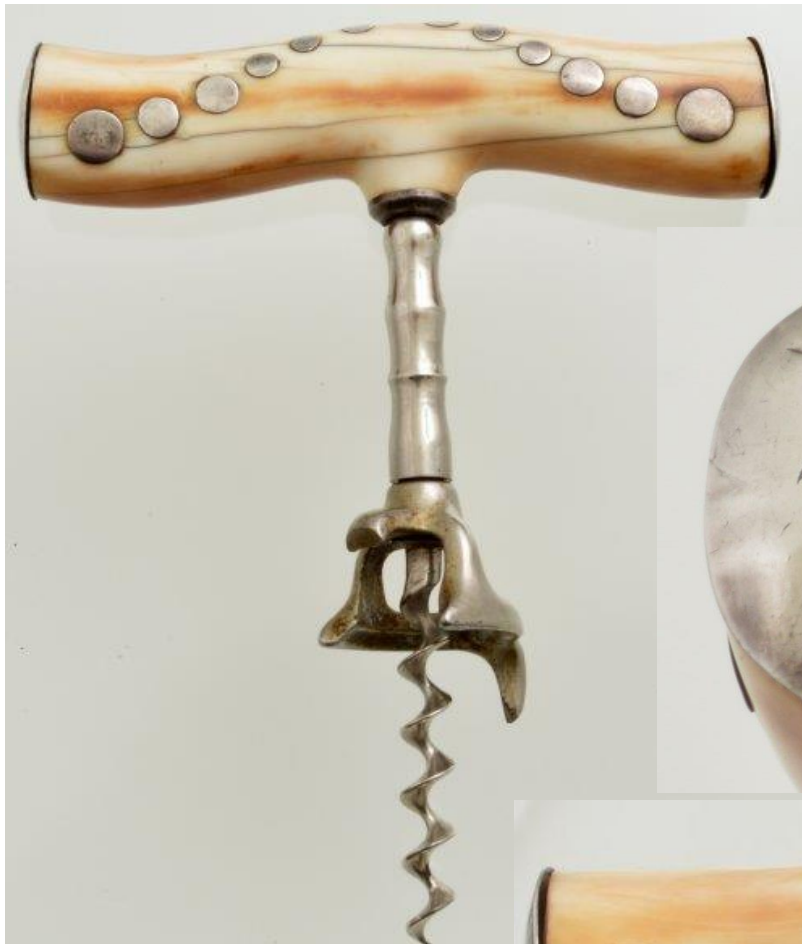
SB30 Stag handle corkscrew with three silver inserts. Theodor Fischer's 1902 German Registered Design. 4.5" x 7". \$135



SB31. Stag handle corkscrew. The silver cap on the end is partially separating and it has a dent. Theodor Fischer's 1902 German Registered Design. 6.5" x 6.5". \$49



SB37 Tusk handle corkscrew with silver mount marked STERLING. 1900 Edwin Walker US patent for the self-pulling bell with cap lifter and prong. 6" x 6". Very good condition. \$145



SB38 Large ivory handle with silver dots inlaid across the front and back. Silver caps at the end with monograms. 6.5" high. 1900 Edwin Walker US patent for the self-pulling bell with cap lifter and prong. 5.25" x 6.5". \$675



SB39 Hatted head on a large stag handle with silver overlay with the Gorham trademark. On January 5, 1886 Edward Thiéry and Charles Crosel mire were granted U. S. Patent No. 333,697 for their "Article of jewelry and method of ornamenting the same." Designs were cut into the silver after it was electroplated to an object as on this corkscrew. 8" x 5.5". There is a worm hole on his upper list. A very nice, rare carving. \$2500.



SB40 Large stag handle corkscrew with a nice carving on a monk holding a 9.25" x 5.75". \$975

SB41 Hefty tusk handle
corkscrew with silver mounts.
Very nice bison head.
8" x 6.25".
\$1875





SB42 "Buffalo Bull" direct pull with silver cap on tail marked STERLING and having the maker's mark of J. F. Fradley & Co., New York City. \$525



SB43 Tusk handle corkscrew. No endcap. The bell and sleeve have movement on the shaft. 1900 Edwin Walker US patent for the self-pulling bell with cap lifter and prong. 6.5" x 5.5". \$49



SB46 The boar's head on this open frame corkscrew is marked STERLING. 6.75" x 6.75". Excellent condition. \$2500



SB47 Stag handle corkscrew with silver mounts on each end, one being a boar's head marked STERLING with the Gorham hallmark. The brush is for cleaning cellar crud off the bottle before opening. *" x 4.5". \$1500



SB48 Small horn handle corkscrew with boars head carving.
Marked STERLING. 7.5" x 4.5". \$350



SB49 Stag handle corkscrew with bear head carving. The bell cap is Edwin Walker's April 17, 1900 U. S. Patent number 647,775. The silver work in the center is a bit rough. The sleeve over the shaft is damaged. \$350



SB50 Deer head carving with silver mount in the middle engraved with initials (dented). Marked STERLING. 8.5" x 5.5". \$475



SB51 Stage handle corkscrew. Deer head with monogrammed silver mount marked STERLING. 7" x 6". Excellent condition. \$550



SB52 Stag handle corkscrew. Deer head with silver mount for engraving. Marked STERLING. 8.75" x 5.75". Very nice. \$525



SB53 Stag handle corkscrew with deer head carved on one end and silver mount on the other end. Marked STERLING. Fluted helix. 8" x 5.25". \$500



SB54 Carved antler with the head of a wild boar. The sterling mount in the center has the initial C. P. L. on the top. 8.5" x 6.5". Excellent. \$750



SB55 A large (9") antler with carved elephant head and self-pulling bell cap. A silver plate attached to the has a monogram. \$1295



SB56 Large dog head - 11" from tip to tip. The shaft is marked WILLIAMSON. The bell is Williamson's 1898 Design Patent No. 29,798 entitled "Cap Lift." \$475



SB58 Tusk handle corkscrew with dog head carving. Silver mount marked STERLING. The bell cap is Edwin Walker's April 17, 1900 U. S. Patent number 647,775. \$675



SB59 Large carved antler handle corkscrew with stag's head carving & sterling silver top cap. The antler handle is approximately 12 inches in overall length. Monogrammed T R C. Excellent corkscrew. \$795



SB60 Stag handle corkscrew with carved bulldog head. 11" handle. \$275-



SB61 Antler corkscrew with carved dog head. Partial sterling collar. 6.25" x 5.5" \$250



SB62 Small tusk corkscrew with bulldog head carving. Silver mount marked STERLING. Silver collar. 5" x 3.75". Very fine. \$525



SB64 Tusk handle corkscrew with dog's head carving. End cap marked STERLING (dented). The bell cap is Edwin Walker's April 17, 1900 U. S. Patent number 647,775. 5.75" x 6". \$475



SB65 Dog head. 5.5". \$75

Sold



SB66 Tusk with monogrammed silver mount with horse head corkscrew. Marked STERLING 27. The bell cap is Edwin Walker's April 17, 1900 U. S. Patent number 647,775. 5.75" x 6". \$675



SB67 Tusk handle corkcorkscrew. Carved hoof. 5" wide handle. \$375



SB69 Stunning wood handle corkscrew with silver end caps. The alligator carving wraps the center of the handle. 1897 Williamson patent corkscrew with wire cutter and cap lifter. 4.5" x 5.5". \$575



SB70 Antler handle
corkscrew with carved
alligator. 1897 Williamson
patent corkscrew with
wire cutter and cap lifter.
10.25" x 6". \$595



SB71 Tusk corkscrew with a large 6.5" alligator carving. The bell cap is Edwin Walker's April 17, 1900 U. S. Patent number 647,775. \$575



SB72 Carved reclining lion
corkscrew. 8.25". \$275