

Corkscrews for Sale

The Bert Giulian 18th and early 19th Century Collection

Don Bull, P. O. Box 596, Wirtz, VA 24184 USA

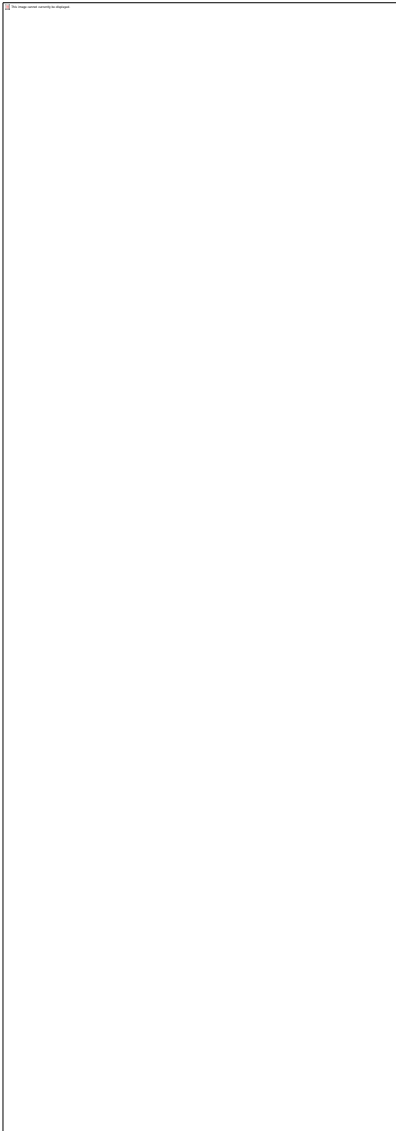
email: dbull@bullworks.net

See reduced prices in **RED**.

(Please email with alphanumerical listing ID for availability and shipping – include your name and address)

Click here to return to index page: <http://bullworks.net/bullsale/>

NOTE: WCC in descriptions refers to the *World-Class Corkscrews* book.



BE002 French elaborate gold piqué and tortoise shell handle corkscrew from a travel set. The delicate gold pieces with intricate design are heated and pressed into the tortoise shell. Late 18th century. WCC page 35. \$14,000 **\$7000**



BE003 French, mid-18th century. Monogram M in a five-pointed star encircled by a ring. Open sheath with four Doric, baluster columns, Classical Revival (Neo-classical). The sheath threads into a knop-turned shaft having alternating small diamond and openwork X decoration, angulations evocative of the angles of the star handle. The central orb in the shaft balances the curved handle and the large acorn finial on the sheath. Tapered Archimedean worm. Openwork scrolled handles with monogram letters are also found in early French scrolled grills and in the handle of a French cage (script A) and nutcracker (script M) from Musée le Secq des Tournelles (Giulian and Chirescu, *Cage Corkscrews*, 2018: 75). \$12,000 **\$7000**

*With surface gilding, small ingots of gold were beaten into leaves of infinitesimal thinness, dipped in oil, and using heat, were pressed into the prepared iron surface. With this technique, the patina of the iron is covered by the gold.



BE005 Small French steel folding bow with surface gilding* of birds and vine leaves. Stop-plate (back-stop) hinge that allows the worm to open in one direction only and to stop at 180 degrees. c.1700. WCC page 38. \$2,500 **\$1500**



BE007 Elegant French single-finger loop steel corkscrew with applied gilt-silver rope work and beaded columns decoration. Small finial on the bottom of the sheath. Mid-18th century. WCC page 19. \$16,500 **\$9500**



BE08 Ivory container with baluster sheath. Rounded mushroom handle and corkscrew with flat ribbon helix. Brass seal with escutcheon surmounted by a royal crown having seven pearls for a Viscount or Count. French. Early 18th century. The motto on the scroll *PLUTOT MOURIR QUE ME SOUILLER* (*To die rather than be defiled*) can be traced to Brittany and specifically to the old family name Lorgieril. Alain de Lorgieril accompanied Saint Louis during the Seventh Crusade, 1228-1254, to the Holy Land. The motto was taken and slightly altered by Anne of Brittany (1477-1514), last independent Breton ruler, *Potius Mori Quam Foedari*. This corkscrew coat of arms, however, does not resemble that of Lorgieril. There have been many descendants; one of them may have applied the motto to his own shield. WCC page 31. \$9,500

\$7500





BE009 Steel picnic corkscrew with fine chasing and gilding, called a "corkscrew for a King." Long festoons of delicately chased rosettes and leaves are alternately separated by columns of grape vines and fluted ribbons. The matte background is brilliantly gilded in contrast to the raised steel designs. Small rounded acorn finial surmounted on the ring. Raised laurel wreath encircling the ring. A second finial extends downward from the ring into the openwork space, and a third finial with stepped, acanthus leaves is placed on the bottom of the sheath. WCC page 62. \$37,500

\$22000



BE010 A delicate, ivory penknife with gold and brass inlay. Combination tool with four folding implements on each end, comprising several quill knives, corkscrew, ear scoop, and file. English. Early 18th century. WCC page 55. \$4,500 **\$2600**



BE027 Bronze triple seal folding bow. 1700-1710. Queen Anne profile with ANNA D G; Standing figure releasing a bird with the lettering VOLLENTEISS (volunteer); Acanthus leaf design. Missing pipe pricker. \$5,500 **\$4800**



BECCC See next page for description

BECCC (photos on previous page) Small steel cage with openwork of barbed quatrefoils alternating with complex quadrilaterals, trapezoids with irregular sides, barbed and curved. Detachable sheath threads into the bottom of the cage and has a seam. Rounded horn handle. Early construction features, but the shaft is sliding, not a self-puller. As the handle is lowered, it engages the top of the barrel. A further turn causes the handle to lock with an audible click. With the sheath in place, the cage is a compact unit for portability.

A flat button at the junction of the shaft and worm is derived from Henshall's 1795 English patent. As the worm is inserted into the cork, the button will eventually engage the top of the cork. At this point the worm can no longer penetrate and continued turning of the handle causes the cork to rotate. Thus, the adhesions are broken, and pulling the cork can be performed more easily.

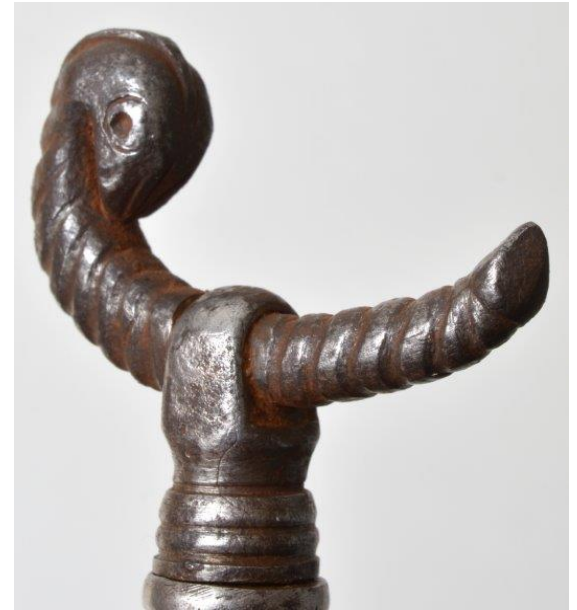
An unusual feature is the presence of short post, no more than 2 or 3 millimeters long, located at the top of the barrel. This post extends horizontally from the exterior of the bottle and projects inside the cage. The post prevents the button from rising and damaging the dome by dentin or cracking during a sudden, forceful extraction. English, early 19th century. \$10,000 **\$6500**

Additional photos/information on the next page



More details of BECCC There are hairline cracks in the handle as seen in the photographs.

The conical cover at the base is not secured. In the photo on the left, there is some damage to the bottom which may have been the connection for the cover. The cover does not have threads.



BE087 French steel corkscrew. A serpent with fluted
rinds echoed on the sheath. Mid-18th century. WCC
page 26. \$12,000 **\$7000**



BE089 French steel corkscrew. Fish engraved with latticework. The sheath has alternating diagonal and horizontal grooves. Tapered auger worm. Mid-18th century. WCC page 26. \$29,000 **\$12500**



BE101 Two finger pull with gargoyles on the handle. Traces of orange paint. \$275

\$250

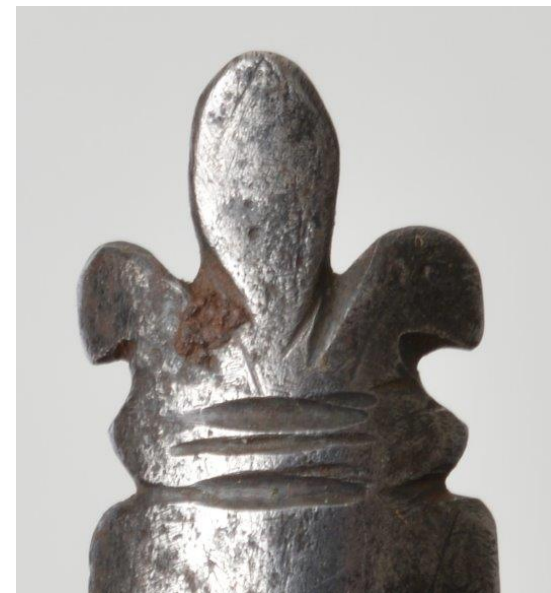


BE106 Late 19th century corkscrew. Dumbbell ends. \$100 **\$75**



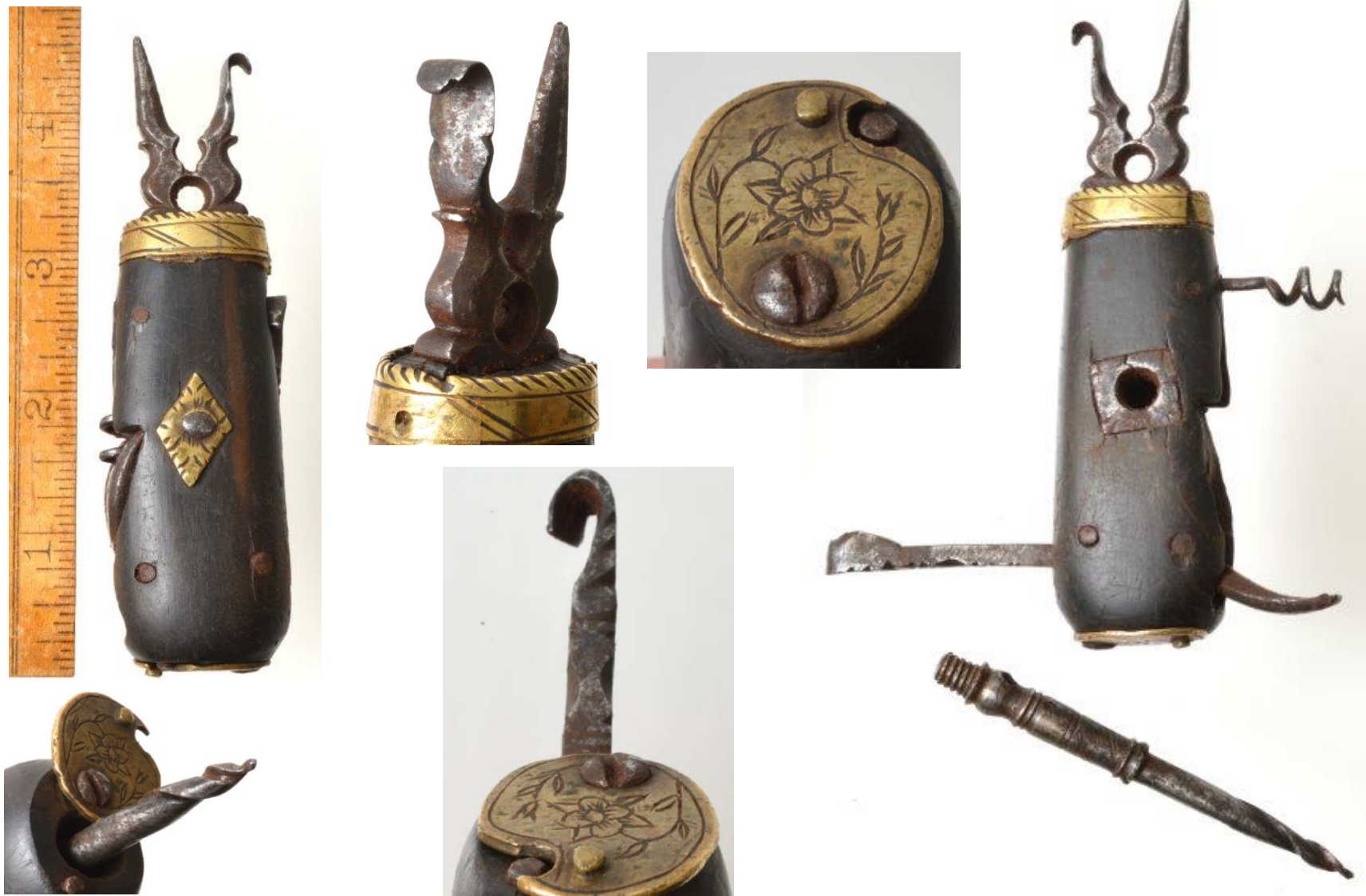
BE121 English small burnished steel folding bow with faceted nail heads (studs) as decoration. The largest head is mounted on a gilded copper medallion. Mid-late 18th century. WCC page 43. \$7,500

\$5500



BE134 Folding smoking implements: pipe pricker, tamper, and reamer, with addition of a corkscrew and razor. A small scroll ornament on the back edge of the razor, turning on the pick, band and linear decoration. A spring in the reamer permits the components to open to 90 or a180 degrees (early square and clean joints). Hound's head on each side protecting the hinge, and a fleur de lis on the end of the reamer. French, c.1800. \$5,000

\$1800



BE152 Rase knife, timber scribe with drag knife folding from the side to scribe numbers or letters. Folding corkscrew and claw wrench. The hollow handle is covered by a brass cap and houses a gimlet that can be removed and threaded into an opening on the opposite side. Dutch. Early 18th century. WCC page 57.

Unique. \$6,000

\$4500



BE153 Long tapering sheath on barrel key. \$150 **\$125**



BE156 Smoker's tool with ember tongs and with pipe tamper-pricker that locks the corkscrew when closed. Small hinged snuff shovel with raised acanthus leaf decoration at its base also locked by the pricker. The pointed arm of the tongs handle is used to ream and to poke the tobacco. Spanish or English. Early 18th century. WCC page 49. Unique. \$8,000 **\$4500**



BE158 Open frame mechanical corkscrew. Unusual **picnic ring** has a **spring** to lock within a **reciprocal groove** in the center of the sheath. Threaded shaft and stabilizing gliding bar that fits into slots in the two pillars. Archimedean worm. English, late 18th century. 7". The spring lock inside one side of the top is broken but the second spring holds it firmly in place. \$12,000

\$6000



BE177 Burnished steel picnic corkscrew with faceted loop and beveled sheath. Long wire helix. English. Mid-19th Century. \$525 **\$450**



BE186 Steel picnic corkscrew with turned sheath. The threads are poor and it is a probable mismatch. \$75



Note collar
damage



BE189 Dark iron four-pillar rack and pinion corkscrew with narrow rack and small turning handles. The top handle is on a threaded shaft for insertion of the worm into the cork. Octagonal compartment with two screws on top to expose the mechanism. Grooved ribbon worm. This corkscrew was found in Russia, but is of French design. c.1800. 7.5". WCC page 73. \$29,000 **\$12500**



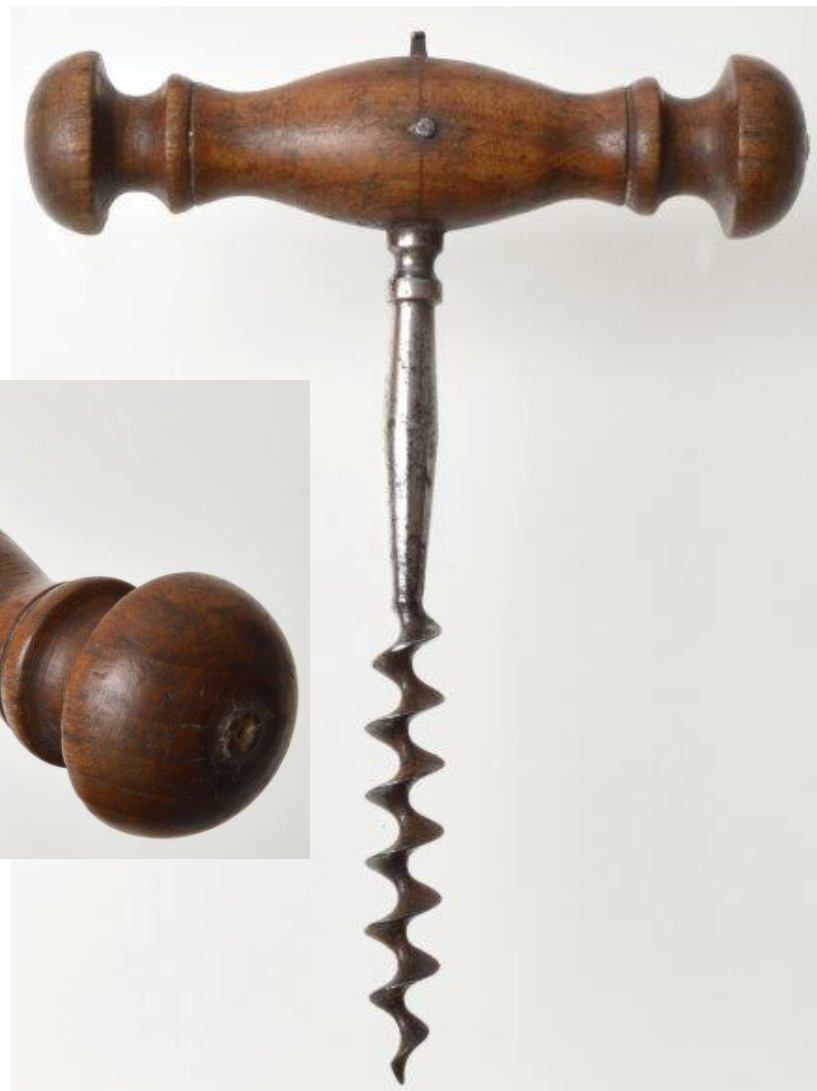
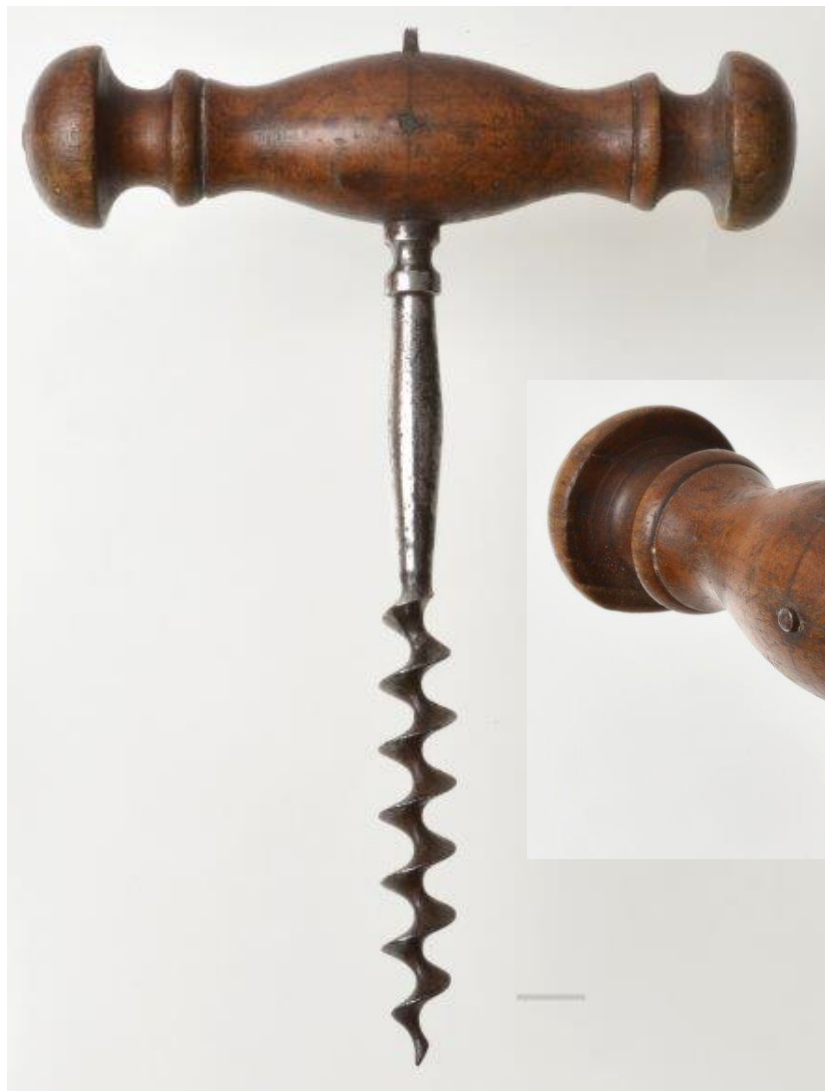
BE206 Contoured wood handle corkscrew. Balustered shank and knop on the upper part adjacent to the handle. Archimedean worm. English c.1800. \$125



BE210 Wood handle corkscrew. Early 19th century. \$95 **\$90**



BE213 Wood handle corkscrew. Early 19th century. Distorted worm. \$75



BE217 Wood handle corkscrew. \$50



BE218 Wood handle corkscrew. \$35



BE219 Bone handle corkscrew.. Age cracks in handle. \$75



BE235 Carved ebony handle with acanthus leaf freeze around the top. Three carved portraits. Floral vase, Silver finial on top. English. c.1700. WCC page 28. \$4,000

\$1800



BE239 Miniature corkscrew with bone handle. Short worm. \$40



\$7000



BE243 (previous page) triple-seal details:

One seal shows a bust of DUKE ORMAN (Ormonde), lord lieutenant of Ireland from 1703 to 1705 and from 1710 to 1711. The other two seals depict sentimental love motifs typical of this period. One depicts two clasped hands and two interlocking hearts with FIDE ET AMORE and the other Cupid sacrificing at the altar of love.

\$7000



BE244 Folding bow with threaded pipe pricker locking the worm when closed Last thread grips tight. The pricker could also be used to pierce the center of the cork to facilitate worm insertion. Brass with rotating triple seal and pricker inserting from the bottom, engraved acanthus leaves. English. c.1720. See next page for details about the seals. English. c.1720. WCC page 39. \$9,500

\$7500



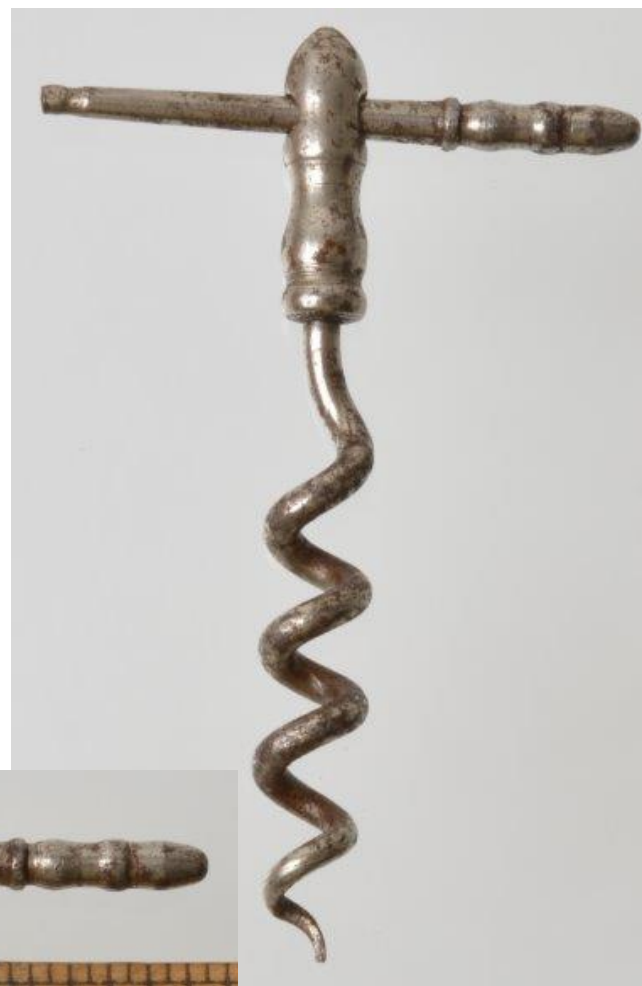
BE244 (previous page) triple-seal details:

The seals depict a profile of a gentleman, a standing figure, and a dog statant (standing with tail extended).



BE246 French picnic corkscrew with extensive chasing and gilding. Recessed, matte gold background contrasts with the steel rosettes and grapevines. Open work in the pedestal at the base of the ring. Third quarter 18th century. Exceptional!!! WCC page 62. \$18,000

\$12500



BE259 Peg and worm corkscrew. \$95



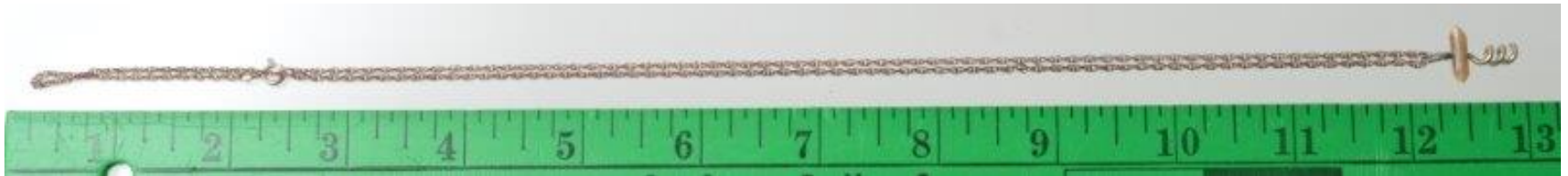
BE264 English knife with tortoise shell scales. The long blade has a cutler's dagger mark. Small blade with opening (seton veterinary knife, the needle being used to insert a thread or string below the skin of an animal to cause infection and thus develop immunity). Square and clean joints. c.1780. Note crack by the rivet. WCC page 54. \$2,500

\$890



BE267 Horseman's knife with ten components, including four fleams (blood-letting tools for larger veins), pointed lancet for smaller veins, as it "threads where the stroke may not be used", curved cutting knife that "taketh away the Superflous Hoof", hoof rasp "which maketh smooth the Hoof" (Markham's *Masterpiece*, 1668), hoof pick, pricker, and corkscrew. The implements fold into the steel guard ornamented with overlapping wavy lines. Marked ANNNOZOO [sic] or AnnnOZOC. Spanish. Mid-18th century. WCC page 52. \$3,500

\$2600



BE281 24" silver chain with miniature corkscrew. Great gift for the corkscrew collector's spouse! \$125 **\$110**



BE293 Early 19th century finger ring silver corkscrew. GIN. \$150 **\$110**



BE268 Eight tool knife. Rusty. Fair condition. \$75

\$60



BE272 Deer foot knife. New York readable on one side of the blade and Czechoslovakia on the other. \$45

\$40

Sold





BE273 An English razor or "rope" knife with squared-off blade and double-hinged worm with flat spring that unfolds to locate in the center of the knife. Horn scales. The knife has a square and clean joint. c.1800. WCC page 53. \$850 **\$750**



BE274 English slot-knife, fork, and spoon set with corkscrew, tortoise shell scales with small silver cartouche. Composed of three sections that fit together with raised studs into slots and slide into fixed position. The spoon is hallmarked with lion passant, leopard's head for London, date mark H (1803) and makers mark SG over EW over IB for Samuel Godbehere, Edward Wigan, and James Boulton. The central section is a delicate, three-prong silver fork hallmarked with the lion and king's head. The steel knife blade is marked NOWIL, cutler John Nowil, Sheffield, established as John Nowil & Sons, Ltd. in 1700. WCC page 54. \$625 **\$575**



BE288 Silver and gold, vermeil etui with contoured case. Chased foliate and rose designs and beveled edges with guilloche (a band-like undulating pattern of fine curved lines and interlaced strands). The corkscrew is not detachable, but rather has a graceful gilt-silver handle, balustered shank, and handcrafted worm. French. c.1760. WCC page 58. Missing one tool. \$2200

\$1200



BE299 Extremely Rare c.1680 Cockfight Corkscrew See details on next page. \$20,000
\$14500

Details for BE299 shown on previous page.

The corkscrew is a trophy, a presentation piece, for a sporting, gaming event. A large, heavy silver corkscrew measuring 15 cm (5.9 inches) in length and weighing 3.75 ounces (116 grams). The corkscrew has a sheath and a large, flat ring handle with two fighting cocks, finials extending from the top. The ring is 6.5 cm (2.5 inches) in outer diameter and is inscribed in an early English script:

On the one side: *At Shrovetide Last*

a Game there Last

by Bonny Red and Lanthorn bred

Bonny Red in Time of day

did stovt dunn slay

Lanthorn att night

blue outt ye Light

On the reverse side: *Maintained by Thomas Bostock. Handed by TD*

On one edge of the thick ring is engraved the name *RED* and on the other edge *LANTHORN*, the names of the cocks. The handle is large enough to be gripped by the entire hand.

The substantial sheath has a well-constructed, subtle seam. The ornamental rings on the top of the sheath were applied as a separate piece and incorporate the interior threading, a technique common on early corkscrews. Many sheaths on early finger ring and picnic corkscrews have thread insets.

The wire helix has two turns, and this short length is also characteristic of the earliest known corkscrews. At that time, corks were small, often extending from the top of the bottle, and did not require stronger worms. Continued on next page....

Additional details for BE299

The construction and characteristics of the Cockfight Corkscrew indicate a very early piece. The date was further established at Christies with study of the content, word usage, and lettering style font of the inscription. Some of the words are now obsolete. This corkscrew could be one of the oldest and arguably the oldest on record.

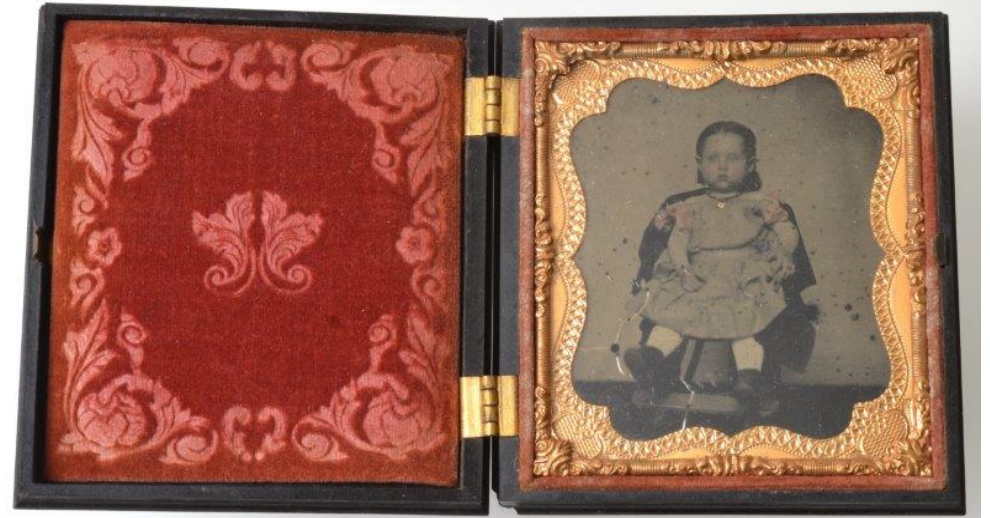
*The “y” of ye is not actually a y but a thorn (pronounced th), being an **ancient runic letter** of the alphabet, which fell into disuse in the late 17th century. The engraving and content on the reverse side is in a style suggesting a date somewhat before 1700, perhaps as early as 1680. (Robin Butler, 2009, ibid).*

The most familiar corkscrews of the early 18th century are small pieces for the pocket, often with sheaths and finger rings. Silver corkscrews were common, along with steel examples, and occasionally brass or gold. While the Cockfight Corkscrew has a sheath, it is hardly portable, being heavy and two to three times as large as other known early corkscrews. Watney (ibid: 1983) stated in his article:

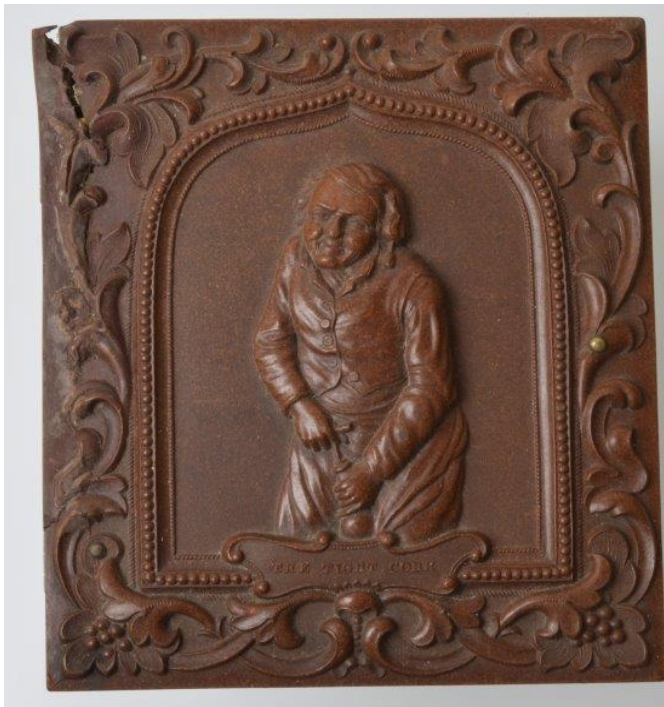
There is good early evidence that institutions, ranging from churches to gaming clubs, possessed imposing silver corkscrews, as part of their necessary equipment whether for communion or carousing . . . Perhaps, these large, heavy-duty pieces, required for frequent use rather than strength of pull, in some cases at any rate, predate the growth in fashion for individual, light-weight bottle-screws carried in the waistcoat of the dilettante.



BE301 Steel chased and gilded finger ring corkscrew. Scrolled and foliate decoration around the loop. Sheath embossed with a lark in the grapevines. Gilded matte background. There is a long seam in the sheath. Wire helix. French, époque Louis XV, early-mid 18th century. \$5,000 **\$2900**

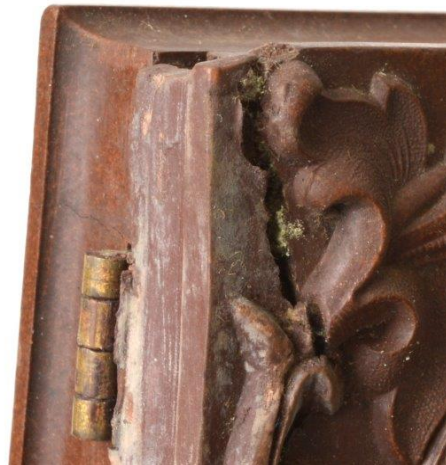


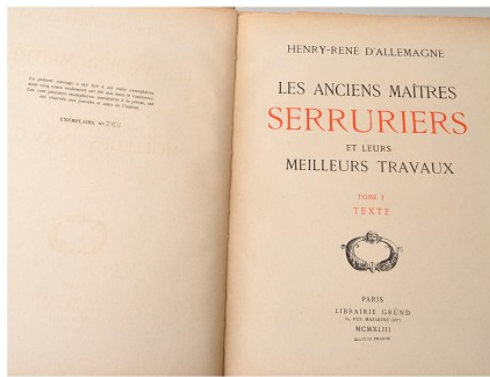
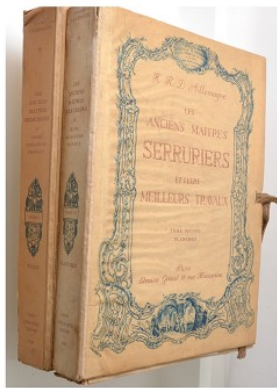
BE295 Union case featuring THE TIGHT CORK
on both sides of the cover. Interior has a velvet
cushion with framed photo. Excellent
condition. \$650 **\$550**



BE297 Union case featuring THE TIGHT CORK on the cover.
Interior has a velvet cushion with framed photo. Note the crack
at the top left corner. \$700

\$550





\$245

**See next page
For sample pages**

Les Anciens Maitres Serruriers Et Leurs Meilleurs Travaux by Henri-Rene D'Allemagne, Two Volumes. Published in 1943 by Librairie Grand, Paris.

Volume 1 presents a history of the Parisian Ironworkers with chapters on grilles, staircases, locks, keys, tool, furniture, and more.

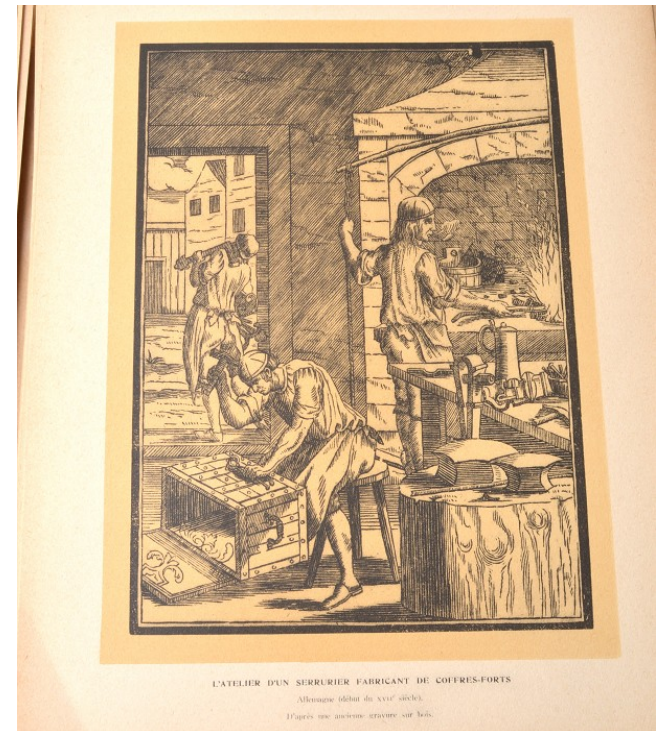
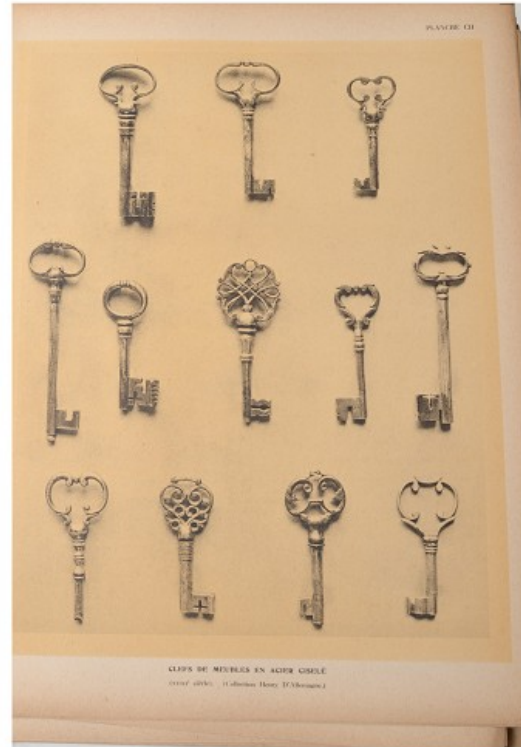
Volume 2 has more than 100 illustrations and 167 folio plates with an index to plates.

A superb French reference work for anyone researching early iron objects. Bert Giulian used these extensively for research for his book on 18th Century corkscrews.

The binding on Volume 1 is intact. Many of the pages are uncut. The pages in Volume 2 are loose. Overall condition is fair.

The weight for the two volume set is nine pounds.

Shipping cost: USA by media mail \$18. Europe \$125. Others inquire.



See Previous page. Sample pages from Les Anciens
Maitres Serruriers Et Leurs Meilleurs Travaux by Henri-
Rene D'Allemagne, Two Volumes. Published in 1943 by
Librairie Grand, Paris.